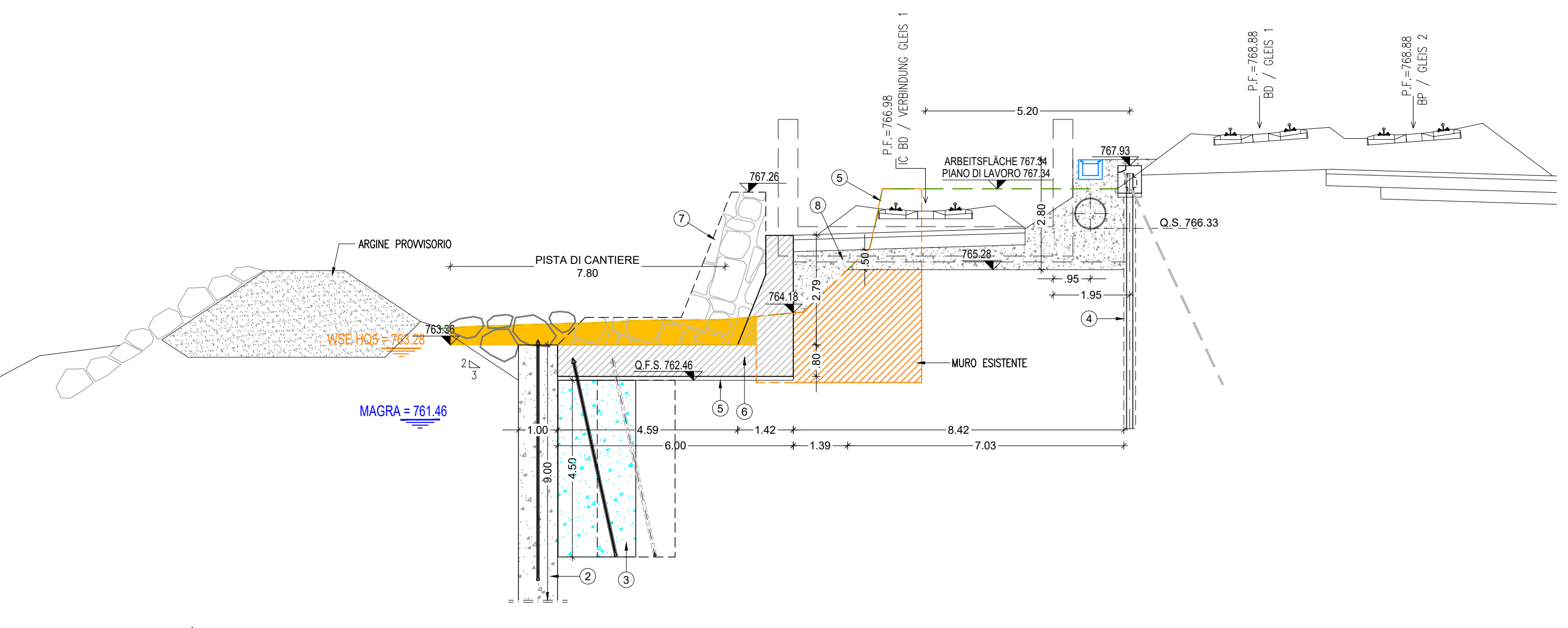


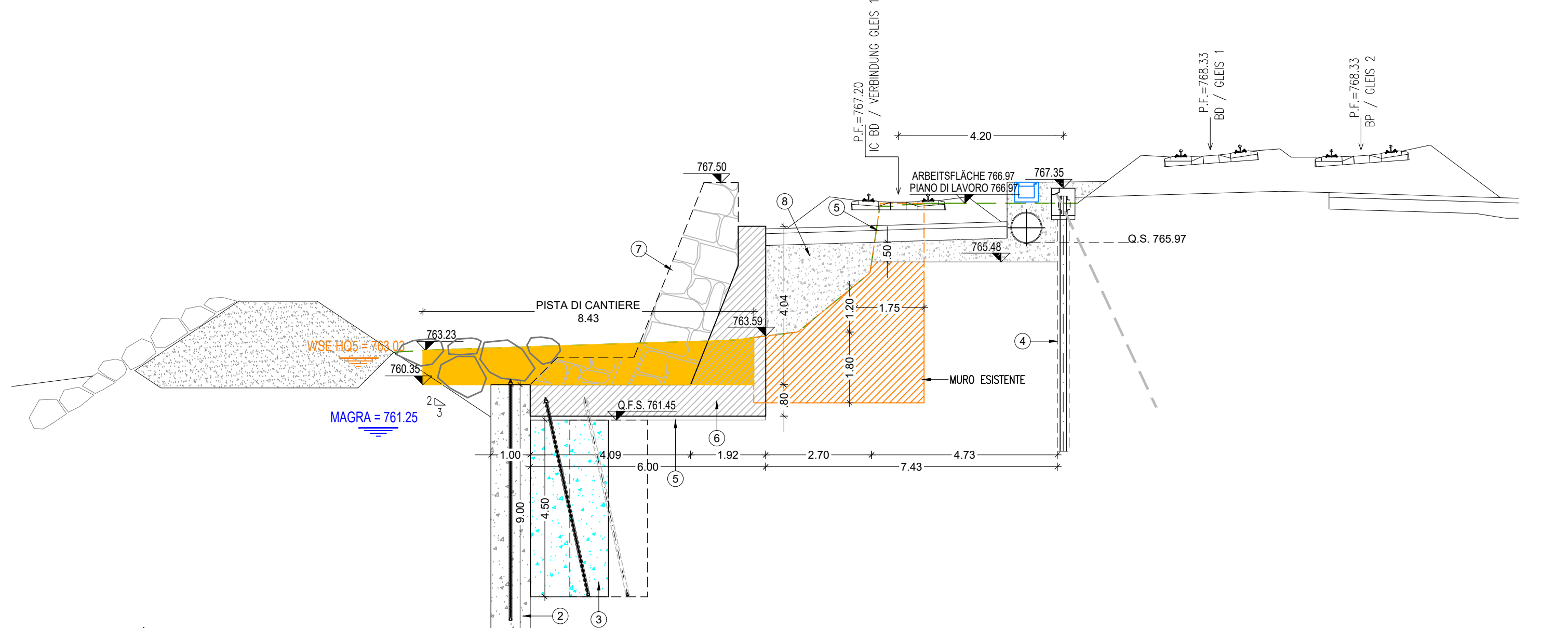
SEZ. PROG. 2+525.00



S/M = 1:100:100
Q.R. = 755.00

QUOTE TERRENO HÖHEN u.d.M. GELÄNDE	DISTANZE TERRENO ENTERNUNGEN GELÄNDE
763.73	-12.92
763.78	-12.86
763.81	-11.25
763.85	-11.22
763.88	-10.10
763.89	-9.90
763.94	-8.33
763.98	-7.41
764.00	-6.05
764.02	-5.95
764.01	-5.11
764.03	-4.94
764.02	-3.12
764.20	-2.44
764.82	-1.42
765.84	-0.96
767.49	-0.85
767.49	0.98
767.50	1.47
767.50	3.96
767.50	2.14
767.50	2.94
767.50	3.84
767.50	4.58
767.50	6.19
767.50	7.12
767.50	8.55
767.50	9.44
767.50	9.98
767.50	12.03
767.50	12.45
767.50	13.87
767.50	14.09
767.50	15.00
767.50	15.25
767.50	16.07

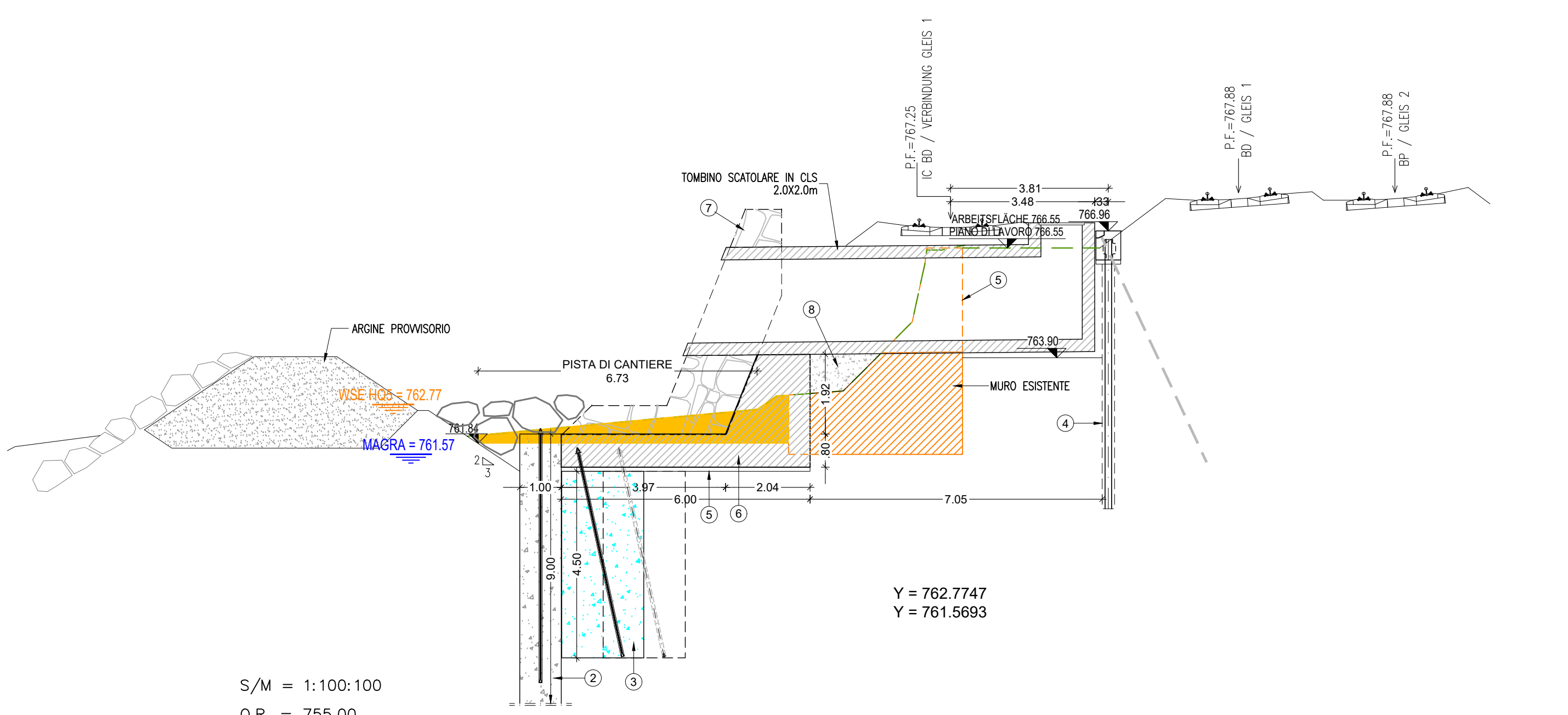
SEZ. PROG. 2+550.00



S/M = 1:100:100
Q.R. = 755.00

QUOTE TERRENO HÖHEN u.d.M. GELÄNDE	DISTANZE TERRENO ENTERNUNGEN GELÄNDE
763.12	-13.73
763.17	-13.05
763.21	-12.45
763.26	-11.21
763.44	-5.70
763.44	-5.58
763.47	-4.41
763.50	-4.06
763.68	-2.85
763.68	-2.57
763.68	-0.82
763.68	0.98
763.68	1.30
763.68	2.18
763.68	3.01
763.68	3.35
763.68	4.38
763.68	5.10
763.68	5.60
763.68	7.63
763.68	8.53
763.68	9.23
763.68	10.25
763.68	10.98
763.68	11.42
763.68	12.43
763.68	13.09
763.68	14.19
763.68	14.73
763.68	15.41
763.68	16.15

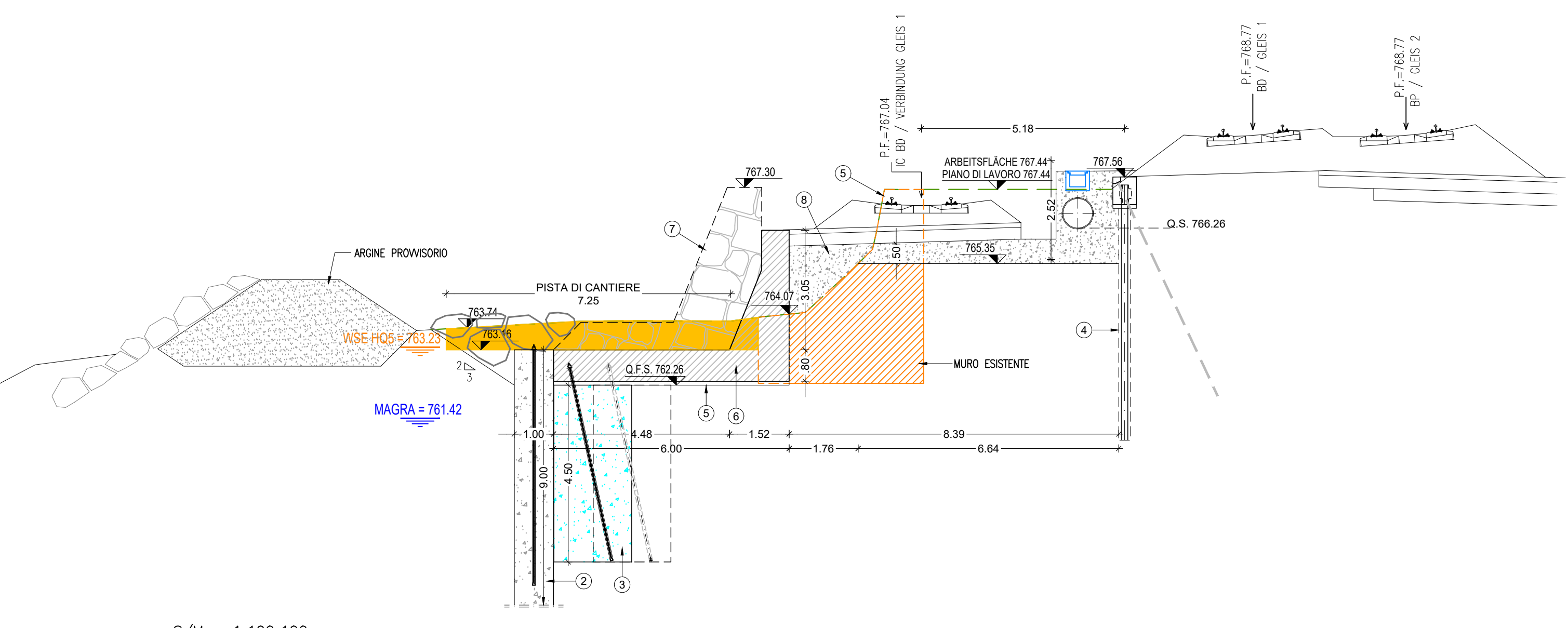
SEZ. PROG. 2+572.50



S/M = 1:100:100
Q.R. = 755.00

QUOTE TERRENO HÖHEN u.d.M. GELÄNDE	DISTANZE TERRENO ENTERNUNGEN GELÄNDE
762.20	-9.41
762.66	-4.67
762.66	-4.20
762.66	-2.59
762.66	5.22
762.66	7.29
762.66	8.77
762.66	12.29
762.66	14.48

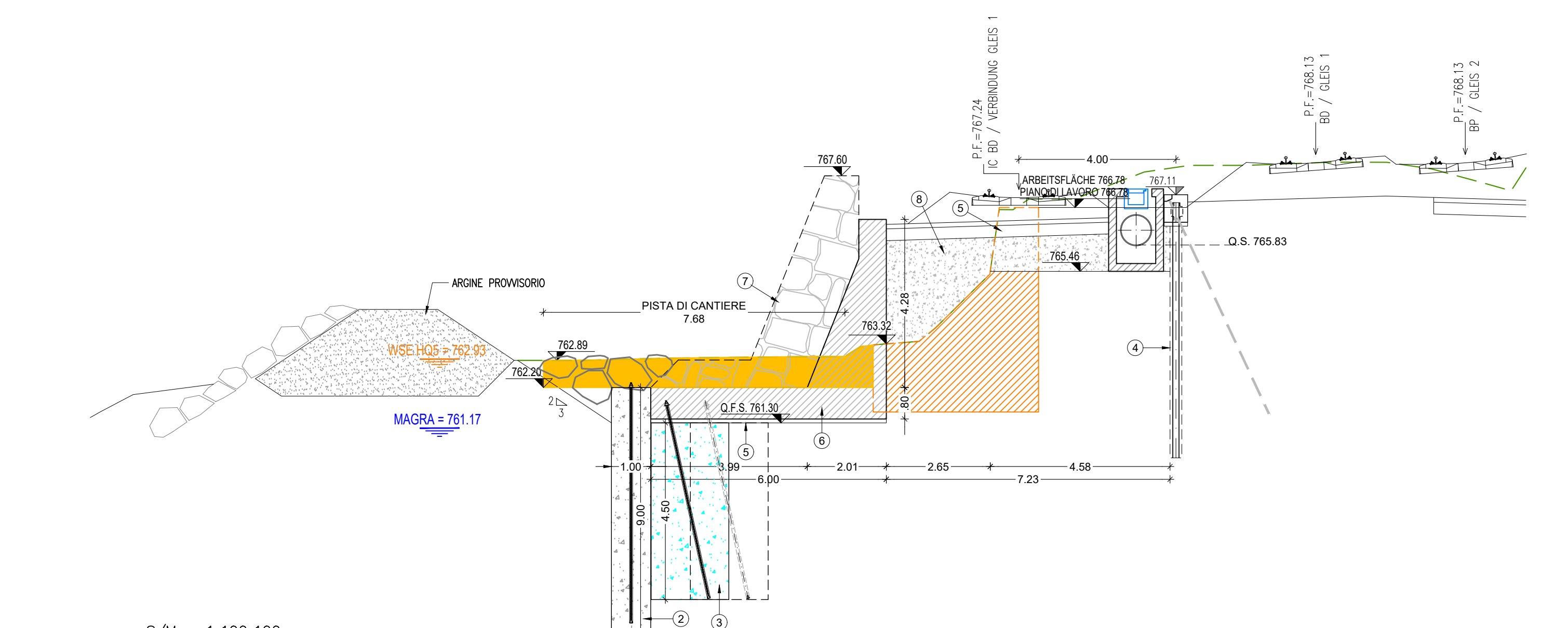
SEZ. PROG. 2+530.00



S/M = 1:100:100
Q.R. = 755.00

QUOTE TERRENO HÖHEN u.d.M. GELÄNDE	DISTANZE TERRENO ENTERNUNGEN GELÄNDE
763.55	-14.12
763.89	-8.67
763.90	-8.03
763.90	-7.43
763.89	-6.48
764.01	-5.95
764.11	-5.25
764.11	-4.00
764.11	-3.12
764.11	-1.75
764.11	-0.54
764.11	-0.58
764.11	0.51
764.11	0.80
764.11	1.93
764.11	2.24
764.11	3.22
764.11	3.50
764.11	4.72
764.11	5.24
764.11	6.69
764.11	7.20
764.11	8.01
764.11	8.73
764.11	9.45
764.11	9.88
764.11	11.10
764.11	12.64
764.11	13.71
764.11	14.20
764.11	14.68
764.11	15.17
764.11	16.19

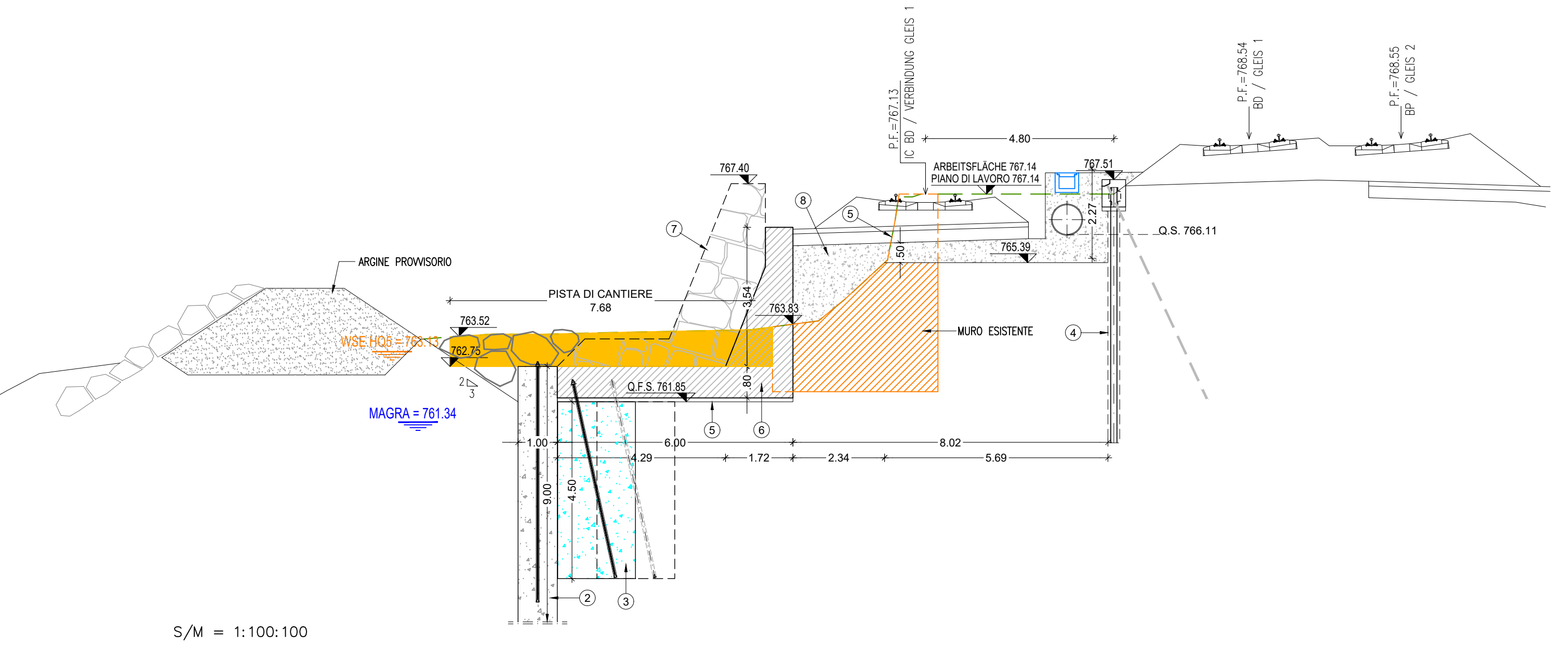
SEZ. PROG. 2+560.00



S/M = 1:100:100
Q.R. = 755.00

QUOTE TERRENO HÖHEN u.d.M. GELÄNDE	DISTANZE TERRENO ENTERNUNGEN GELÄNDE
762.85	-17.29
762.85	-16.46
762.85	-11.30
762.85	-10.58
762.85	-9.45
762.85	-8.61
762.85	-8.00
762.85	-6.90
762.85	-6.13
762.85	-5.22
762.85	-4.43
762.85	-3.69
762.85	-2.13
762.85	-0.74
762.85	0.13
762.85	0.65
762.85	1.43
762.85	1.98
762.85	3.19
762.85	4.34
762.85	4.58
762.85	5.20
762.85	5.78
762.85	6.81
762.85	7.15
762.85	8.19
762.85	8.91
762.85	9.37
762.85	9.78
762.85	10.52
762.85	11.52
762.85	12.12
762.85	12.26
762.85	12.26

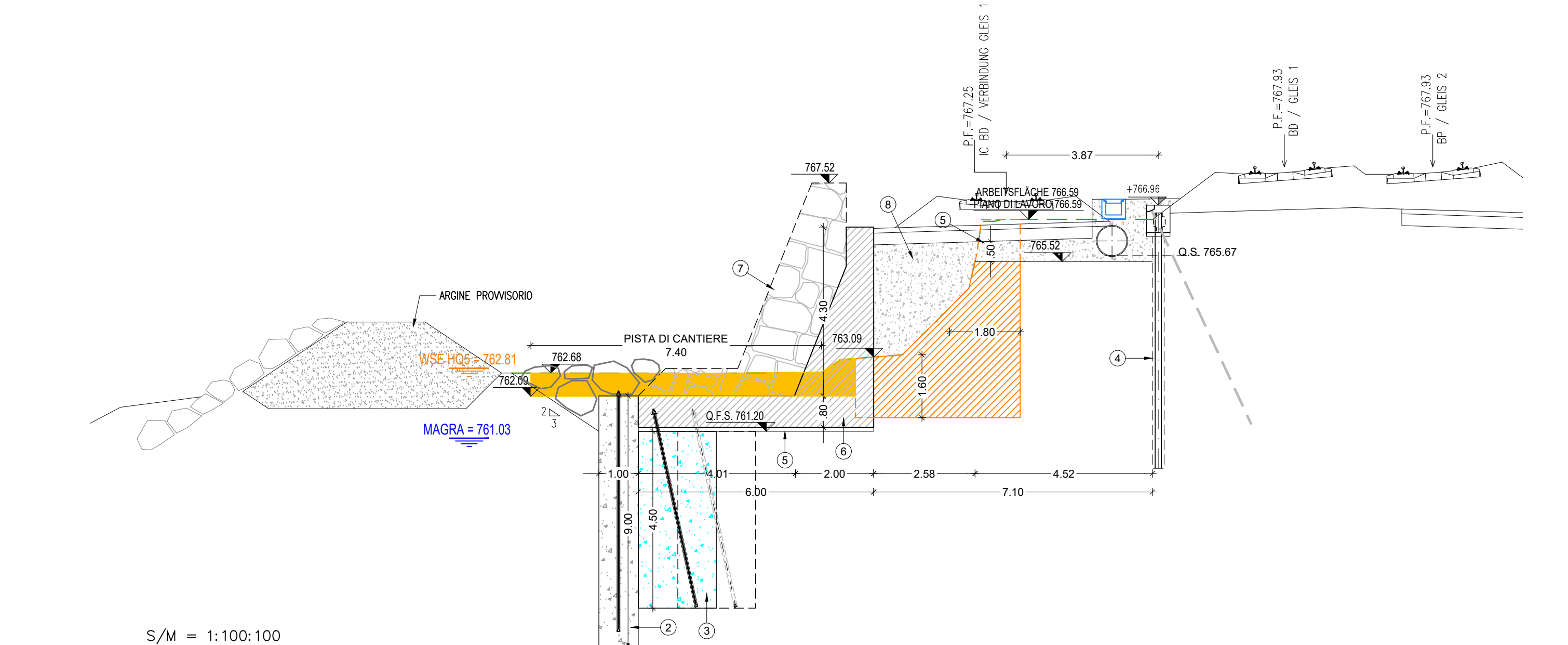
SEZ. PROG. 2+540.00



S/M = 1:100:100
Q.R. = 755.00

QUOTE TERRENO HÖHEN u.d.M. GELÄNDE	DISTANZE TERRENO ENTERNUNGEN GELÄNDE
762.50	-12.15
762.57	-11.02
762.57	-8.75
762.57	-8.49
762.57	-7.32
762.57	-6.19
762.57	-5.32
762.57	-4.43
762.57	-3.26
762.57	-2.72
762.57	-2.07
762.57	-0.97
762.57	-0.48
762.57	-0.33
762.57	2.59
762.57	2.81
762.57	3.87
762.57	3.92
762.57	5.35
762.57	5.49
762.57	7.60
762.57	8.31
762.57	9.03
762.57	9.73
762.57	10.18
762.57	12.55
762.57	13.36
762.57	14.01
762.57	14.63
762.57	15.24
762.57	16.85

SEZ. PROG. 2+570.00



S/M = 1:100:100
Q.R. = 755.00

QUOTE TERRENO HÖHEN u.d.M. GELÄNDE	DISTANZE TERRENO ENTERNUNGEN GELÄNDE
762.70	-16.37
762.70	-14.68
762.70	-13.59
762.70	-12.28
762.70	-8.04
762.70	-4.71
762.70	-4.23
762.70	-3.39
762.70	-2.65
762.70	-1.77
762.70	-0.95
762.70	-0.28
762.70	1.22
762.70	3.12
762.70	3.26
762.70	4.27
762.70	5.13
762.70	5.82
762.70	6.08
762.70	7.96
762.70	8.68
762.70	9.40
762.70	9.69
762.70	10.55
762.70	11.00
762.70	12.11
762.70	12.57
762.70	13.15

- 1 INIEZIONI CHIMICHE BICOMPONENTI
- 2 JETTING CON VELOCITA' DI ROTAZIONE VARIABILE
- 3 COLONNE DI JET GROUTING
- 4 MICROPALI TIPO "SYMMETRIX" CON BARRE AUTOPERFORANTI TIPO DWYI DRILL
- 5 ESCAVAZIONE MURO DI PROGETTO E DEMOLIZIONE PARZIALE DEL MURO ESISTENTE
- 6 ESECUZIONE MURO C.A. DI PROGETTO
- 7 COMPLETAMENTO CON MASSI CICLOPICI
- 8 RIEMPIMENTO CON CALCESTRUZZO POROSO

- 1 BIKOMPONENTEN CHEMICAL INJECTIONS
- 2 JETTING MIT VARIABLER DREHGESCHWINDIGKEIT
- 3 SPALTEN VON JET GROUTING
- 4 "SYMMETRIX" -MIKROPÖLE MIT DWYI-BOHRER-SELBSTBOHRSTANGEN
- 5 AUSHUB DER PROJEKTWAND UND TEILWEISER ABRISS DER BESTEHENDEN WAND
- 6 WANDAUSFÜHRUNG C.A. PROJEKT
- 7 ABSCHLUSS MIT ZYKLOPISCHEN MASSEN
- 8 FÜLLUNG MIT PORÖSEM BETON

QUANTITA' CALCESTRUZZO POROSO DRENANTE

PROGRESSIVE	MC
2+525 - 2+530	45.87
2+530 - 2+540	88.35
2+540 - 2+550	86.10
2+550 - 2+560	134.79
2+560 - 2+570	137.75
2+570 - 2+572.5	27.46
TOTALE	520.32

MENGE DRAINAGE-LEICHTBETON

PROJEKTKILOMETER	MC
2+525 - 2+530	45.87
2+530 - 2+540	88.35
2+540 - 2+550	86.10
2+550 - 2+560	134.79
2+560 - 2+570	137.75
2+570 - 2+572.5	27.46
GESAMT	520.32

LEGENDA - LEGENDE

WSE HQS LIVELLO DELLA PIENA CON TEMPO DI RITORNO 5 ANNI
WSE HQS HOCHWASSERSTAND MIT WIEDERKEHRZEIT 30 JAHRE
MAGRA LIVELLO DELLA PIENA Q = 10 m/s
NIEDRIGWASSERZEIT HOCHWASSERSTAND Q = 10 m/s
N.B.: IL LIVELLO IDRALICO DI CALCOLO È IL LIVELLO DI "MAGRA"
N.B.: DER BERECHNETE WASSERSPIEGEL IST DER "NIEDRIGWASSERZEIT"

Stato di elaborazione

Revisione	Modifiche	Responsabile	Data
00	Emersione / Prima Versione	M. Bianchi	26.04.2021
01			
02			
03			
04			
05			

BRENNER BASISTUNNEL
Designvarianation

Potenzialstudie zur Eisenbahnstrecke München-Verona
GALLERIA DI BASE DEL BRENNERO
Variazione Progettuale

Sub-Bauos Hauptbauwerke Eisackquerung
Sublotto di costruzione Opere Principali Sottotraversamento Isarco

<p>06 - Bauwerksplanung</p> <p>02 - Offene Bauweise</p> <p>Querschnitt / Regelprofil</p> <p>Titel</p> <p>Verbindungstunnel Gies 1 km 2+525-2+660</p> <p>Querschnitte Bauprovisionen - Blatt 1</p>	<p>06 - Progettazione delle opere</p> <p>02 - Galleria artificiale</p> <p>Sezione trasversale / Sezione Tipo</p> <p>Titolo</p> <p>Galleria di inter. binario dispari km 2+525-2+660</p> <p>Sezioni trasversali opere provvisionali - Tav. 1</p>
---------------------------------------------------------------------------------------------------------------------------------------------------------------------------------------------------	-------------------------------------------------------------------------------------------------------------------------------------------------------------------------------------------------------------------------------------------------

<p>Autore/Elaboratore</p> <p>ISARCO</p>	<p>Redattore/Elaboratore</p> <p>webutil</p> <p>STRABAG</p> <p>COLLINI</p>	<p>Verificare/Verificato</p> <p>26.04.2021</p> <p>P. Amantini</p>	<p>Redazione/Redazione</p> <p>26.04.2021</p> <p>F. Fontana</p>
-----------------------------------------	---------------------------------------------------------------------------	-------------------------------------------------------------------	----------------------------------------------------------------

<p>Progetto/Progettato</p> <p>02 H71 XX YYY</p>	<p>Disegno/Disegnato</p> <p>06 02 222.01</p>	<p>Scale</p> <p>1:100</p>
-------------------------------------------------	----------------------------------------------	---------------------------