

Bauherr/ Committente

**SEILBAHNEN ST. VIGIL IN ENNEBERG AG
FUNIVIE SAN VIGILIO DI MAREBBE SPA**

39030 St. Vigil in Enneberg
Str. Plan de Coronas Nr. 38
Telefon: 0474/501131
e-Mail: info@funivi.it

39030 San Vigilio di Marebbe
Via Plan de Coronas n. 38
Telefax: 0474/501546



Der Bauherr / Il committente

Projekt

Progetto

EINREICHPROJEKT

Abbruch und Wiederaufbau der Aufstiegsanlage RARA, Erweiterung der Skipiste RARA I und Errichtung der neuen Skipiste RARA II

PROGETTO DEFINITIVO

Demolizione e ricostruzione dell'impianto di risalita RARA, ampliamento della pista da sci RARA I e costruzione della nuova pista da sci RARA II

Inhalt

Contenuto

AUFSTIEGSANLAGE RARA
Lifttechnische Details

IMPIANTO DI RISALITA RARA
Dettagli tecnici funiviari



DR. ING. ERWIN GASSER

VIA · MICHAEL PACHER · STR 11
39031 BRUNECK · BRUNICO (BZ)

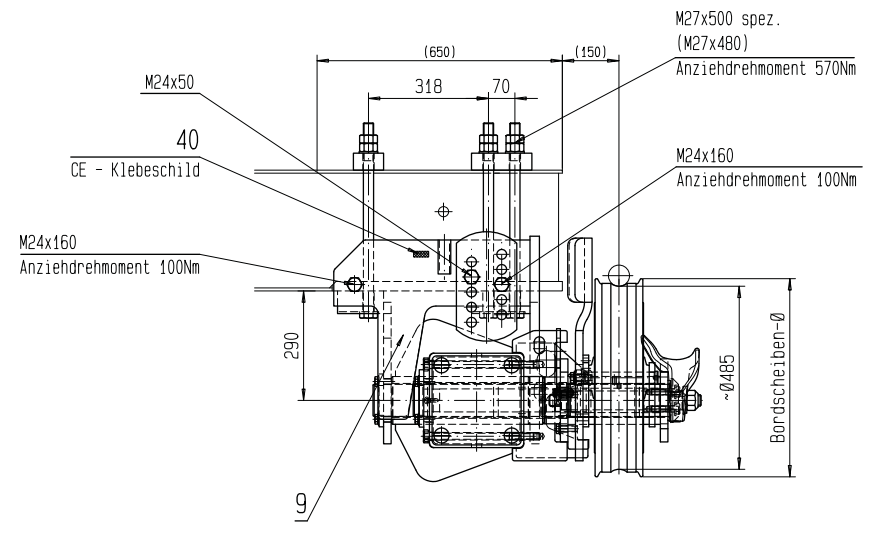
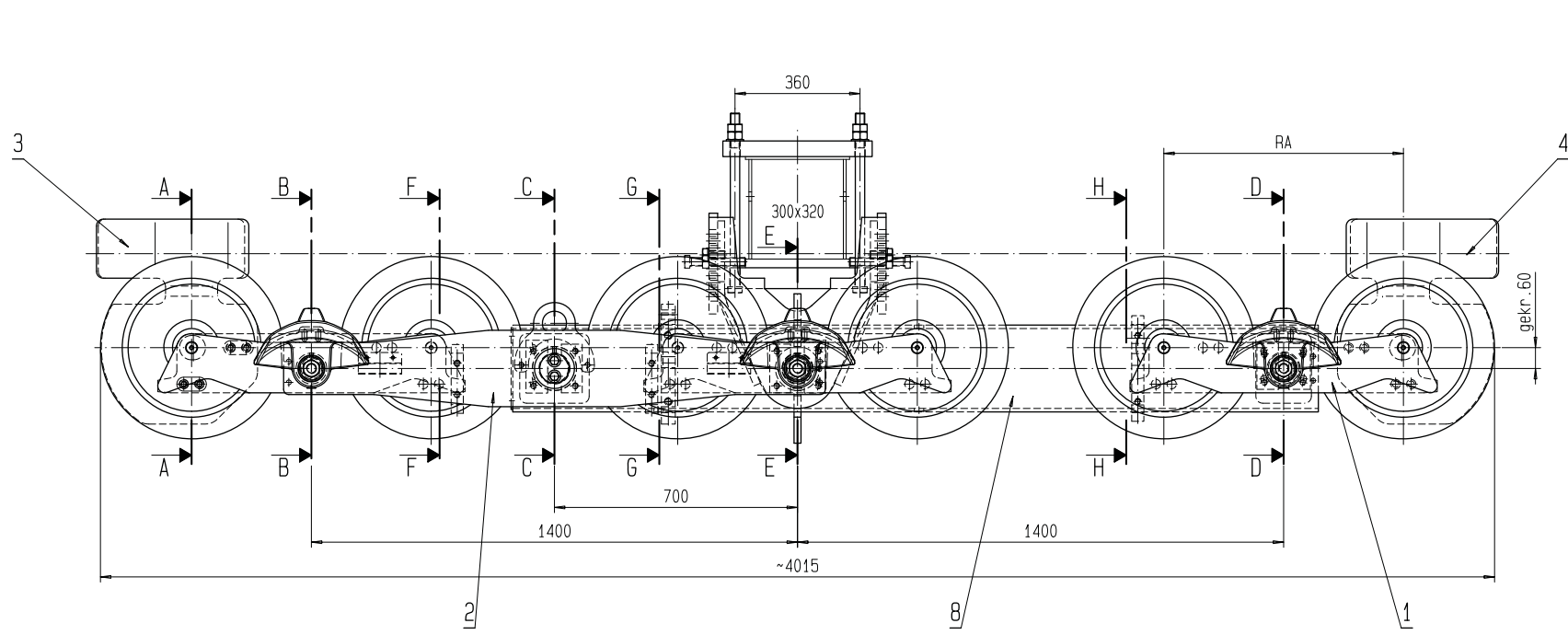
TEL 0039 0474 551679 · MOBIL · CELL 0039 335 6784366

FAX 0039 0474 537724 · INFO@GASSER-INGENIEUR.IT

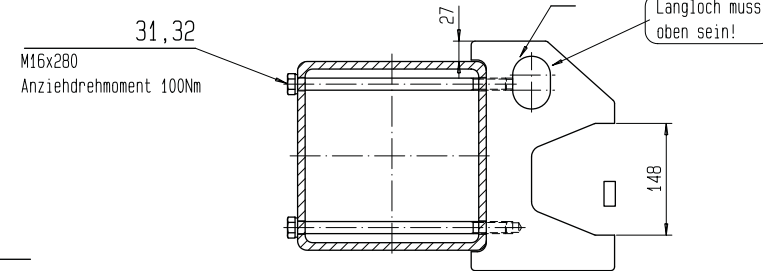
WWW.GASSER-INGENIEUR.IT

Der Projektant / Il progettista

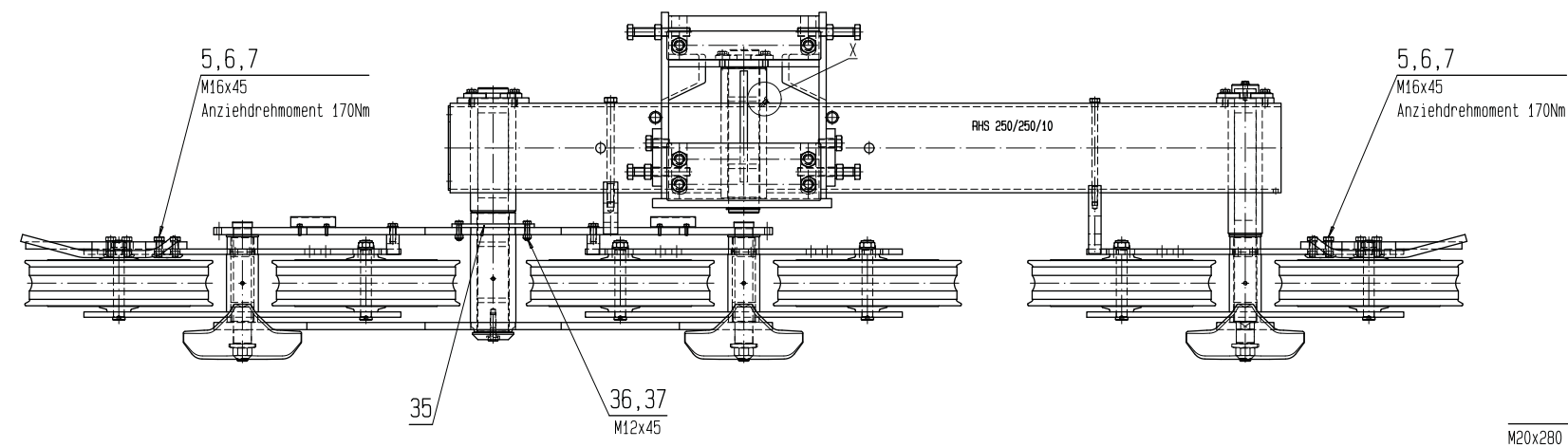
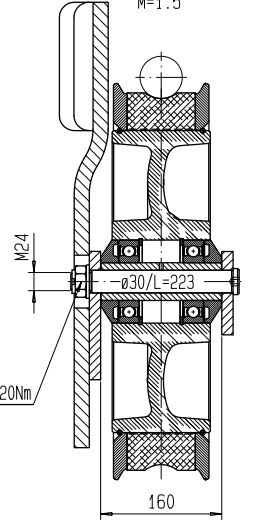
Datum data	Projektleiter capo progetto	Bearbeiter elaboratore	Prüfer controllore	Freigabe approvazione	Projektnummer numero progetto
Dez. 2017	P. Verginer	DPP	EXT	E. Gasser	032/2017
Datum data	Bearbeiter elaboratore	Rev. rev.	Art der Änderung tipo di modifica		Plannummer/ Index numero piano/ indice
					EP2.2 REV 0



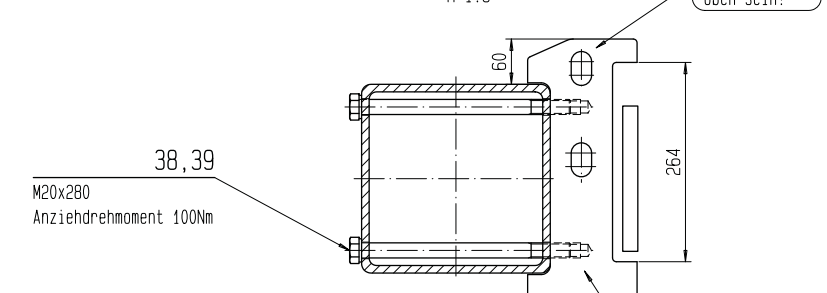
Schnitt H-H
M=1:5



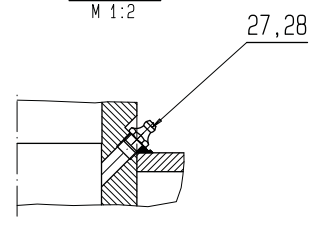
Schnitt A-A
M=1:5



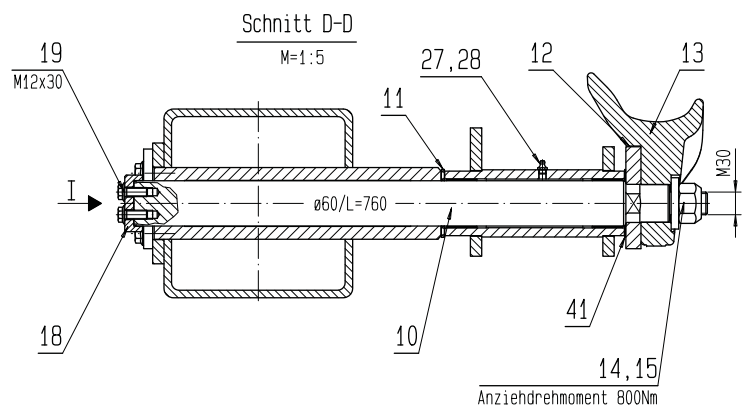
Schnitt G-G
M=1:5



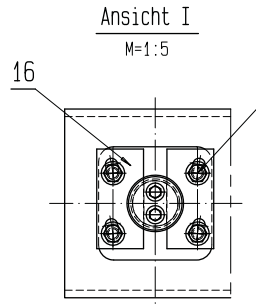
Detail X
M 1:2



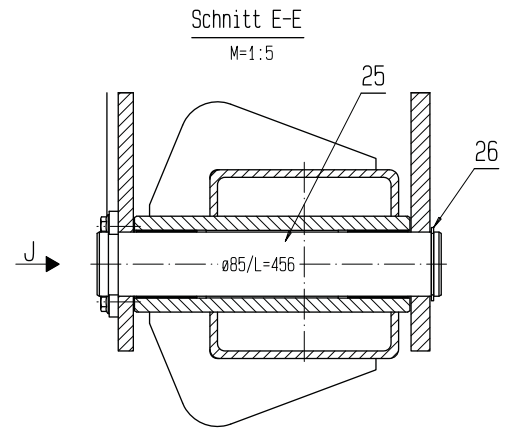
Schraubenverbindungen, bei denen kein Anziehdrehmoment angegeben ist, sind nach Doppelmayr-Norm anzuziehen!



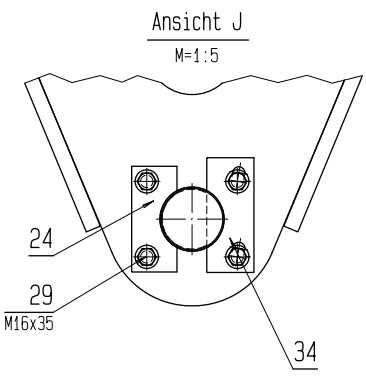
Schnitt D-D
M=1:5



Ansicht I
M=1:5

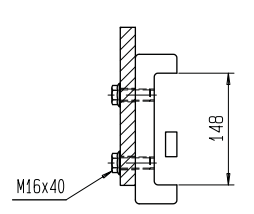


Schnitt E-E
M=1:5

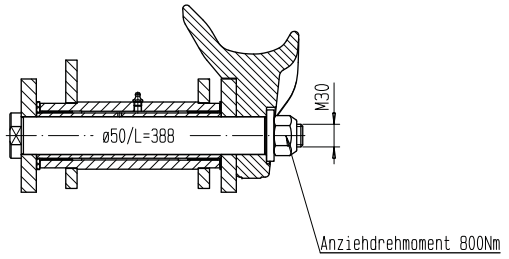


Ansicht J
M=1:5

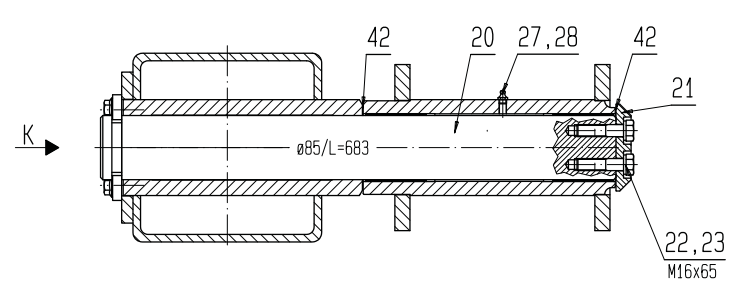
Schnitt F-F
M=1:5



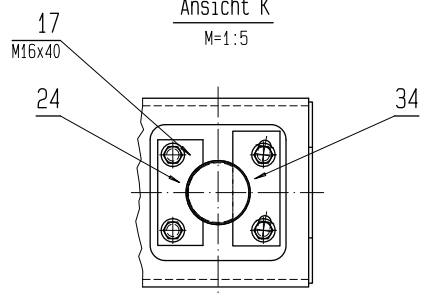
Schnitt B-B
M=1:5



Schnitt C-C
M=1:5

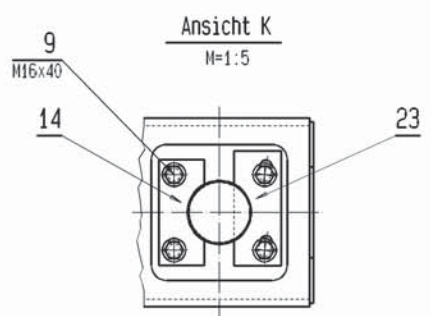
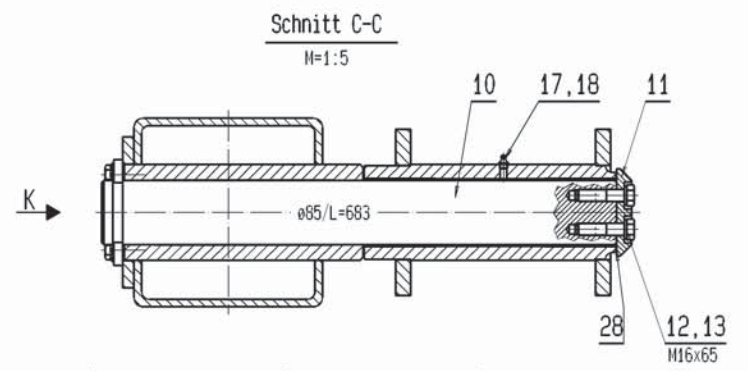
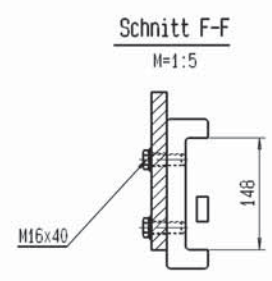
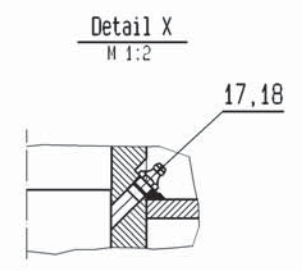
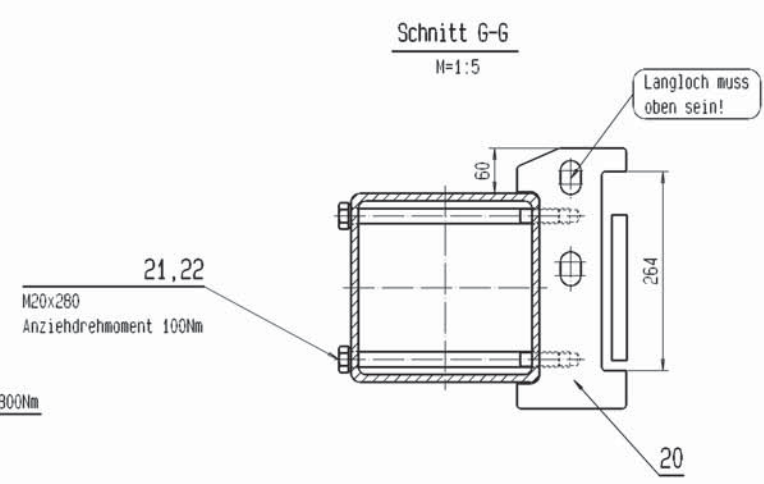
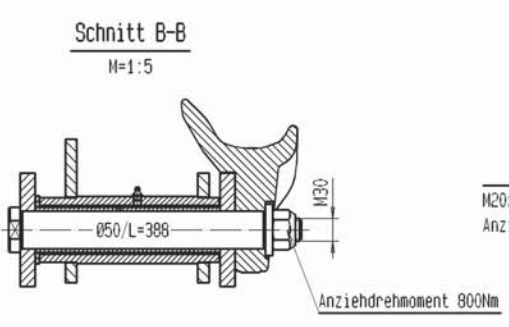
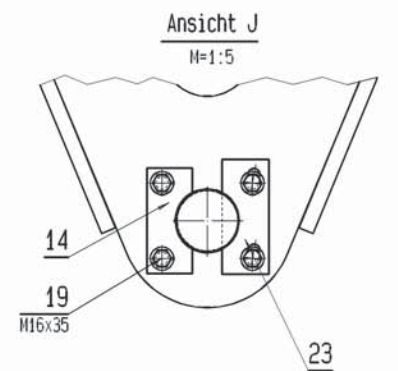
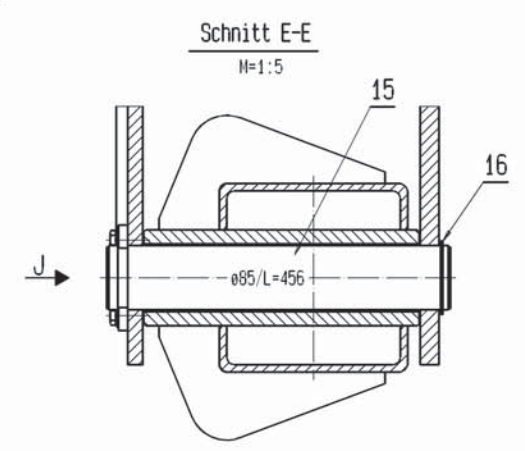
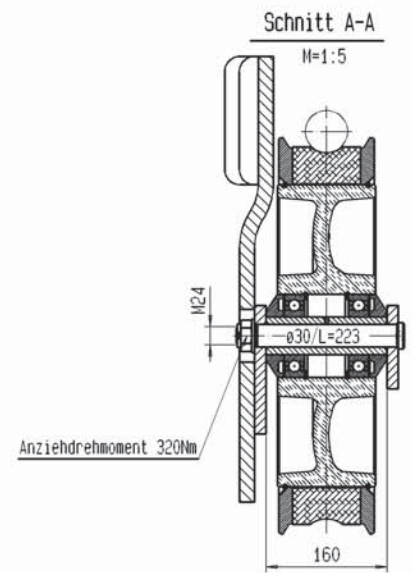
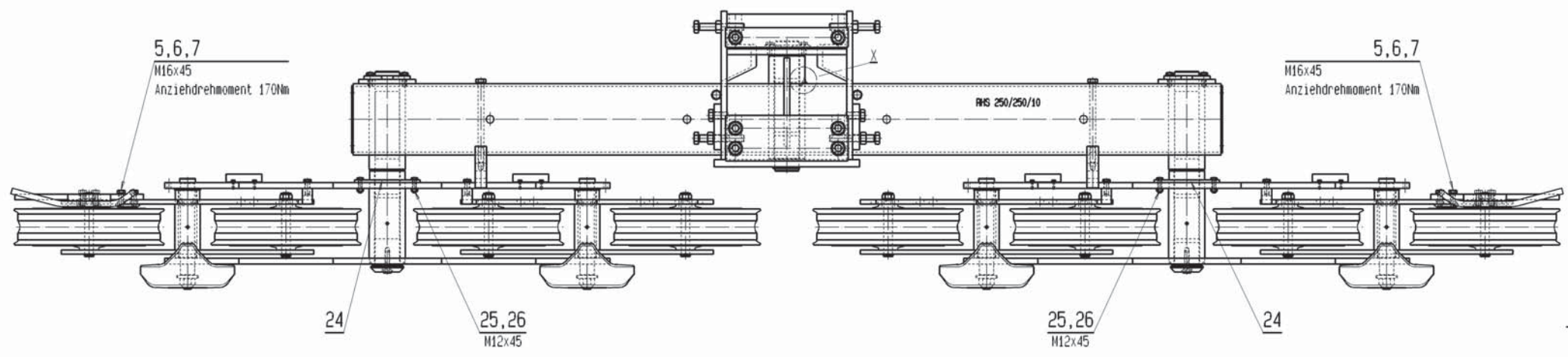
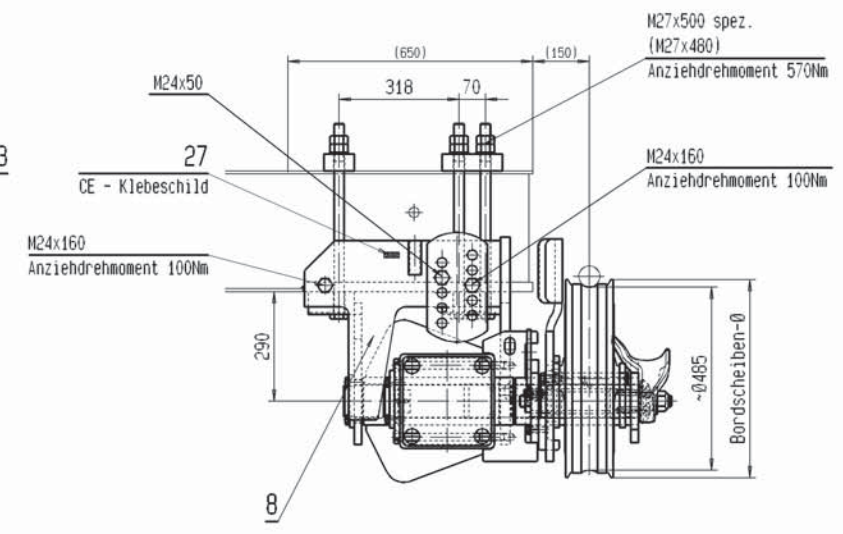
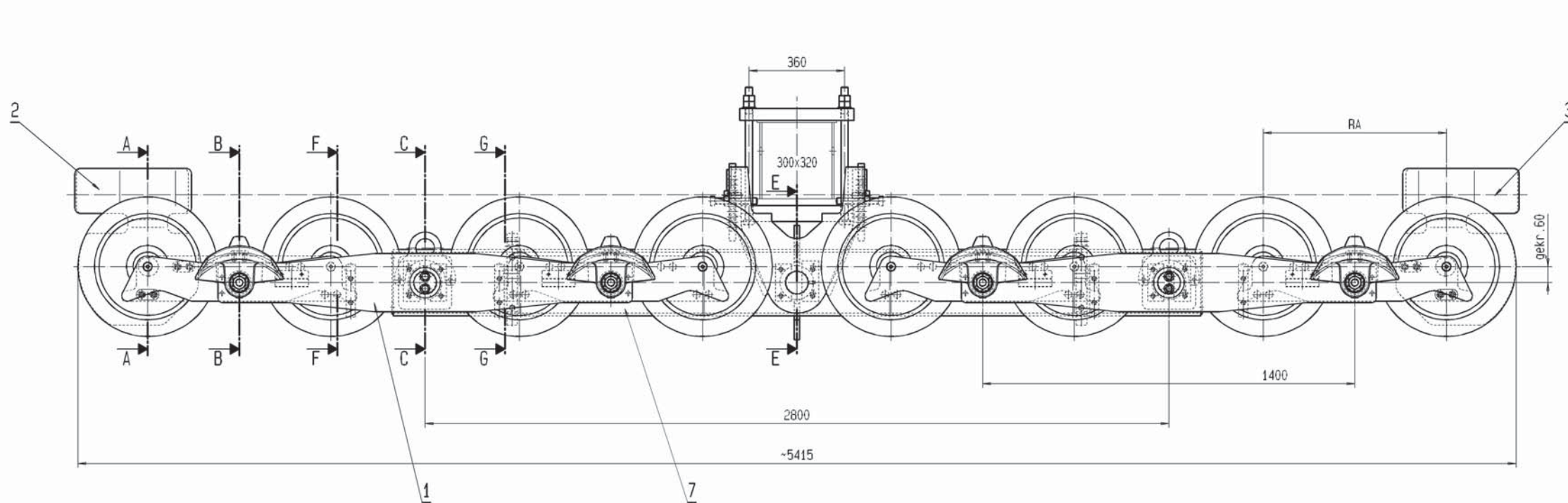


Ansicht K
M=1:5



Konformität
10497457
10545586

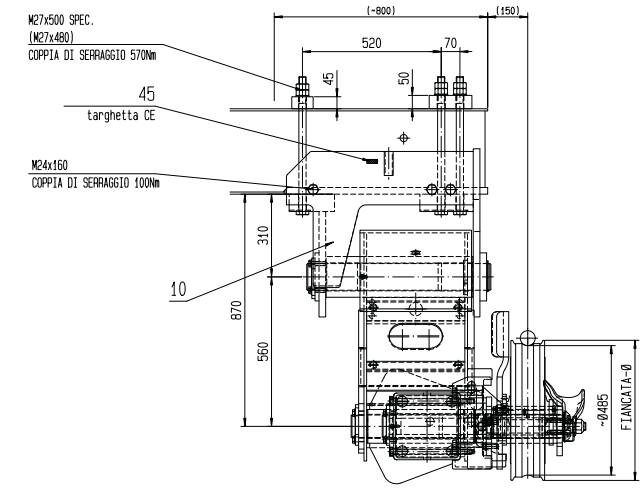
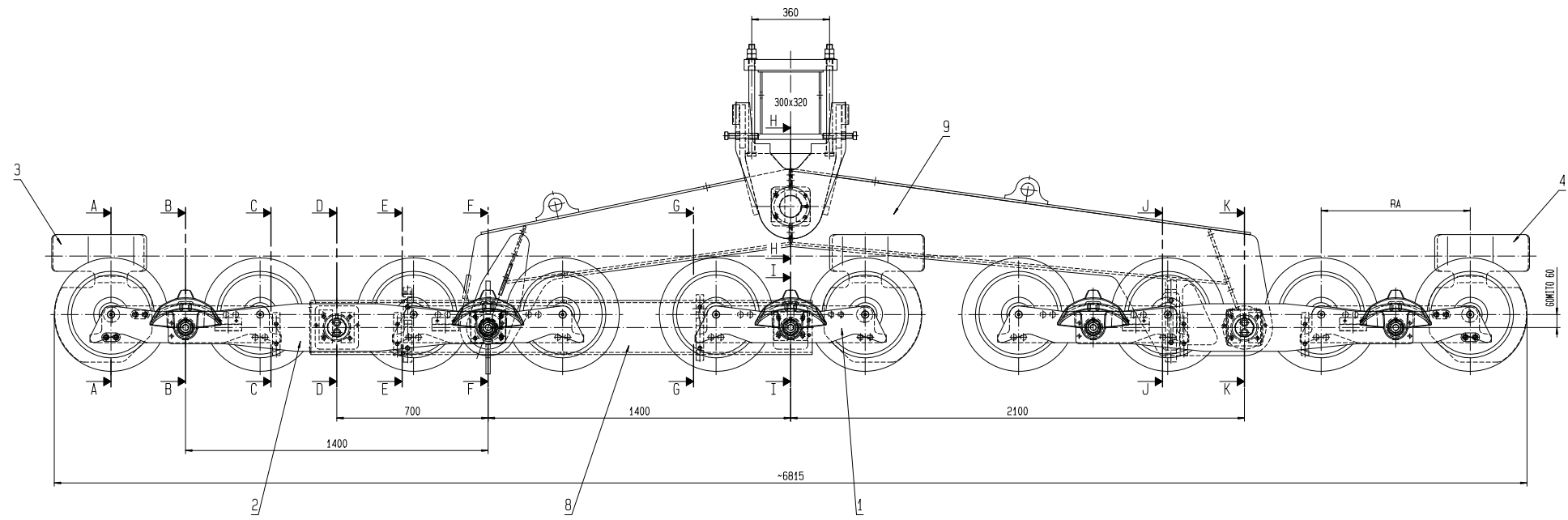
FG.: 1250 kg		2er-Wippe: RA=647		11513802	
		Bordscheibe: ø530		11109930	
		2er-Wippe: RA=652		10487215	
		Bordscheibe: ø530		10487218	
		2er-Wippe: RA=690			
		Bordscheibe: ø525			
		2er-Wippe: RA=680			
		Bordscheibe: ø520			
a	neuen RA und Bordscheiben-Ø hinzugefügt	2011-03-30	Linder Stefan		
Index	Änderung	Datum	Name	Ausführung	Ident. Nr.
Doppelmayr		Innova Patent GmbH Rickenbacherstr. 8-10 A-6960 WOLFRUM/AUSTRIA		SB	
Anlage		Maßstab		1/10	
Auftrag		Faktor: 1.000		2016-08-04	
6T-RB, Type-501C		Masse roh		kg	
		Platzvermer:		2016-03-15/11-17-10	
		Masse		kg	
		Ursprungs-Nr.		Ident. Nr.	
		310001266005970		a	
Diese Zeichnung ist geistiges Eigentum der Doppelmayr Seilbahnen GmbH und übertragen per 31.12. des Erstellungsjahres an die Innova Patent GmbH. Sie darf ohne unsere besondere Zustimmung weder vervielfältigt, noch ausgeführt, noch dritten Personen bekanntgegeben werden.					



Schraubenverbindungen, bei denen kein Anziehdrehmoment angegeben ist, sind nach Doppelmayr-Norm anzuziehen!

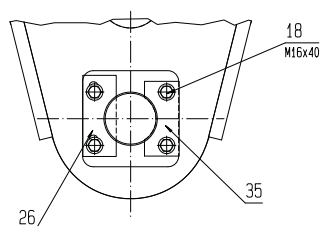
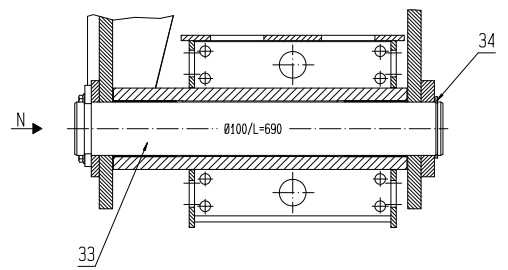
Konformität
10497457
10545586
11644465

2er-Wippe: RA=647		11513795
Bordscheibe: Ø530		
2er-Wippe: RA=652		11109936
Bordscheibe: Ø530		
2er-Wippe: RA=690		10487287
Bordscheibe: Ø525		
2er-Wippe: RA=680		10487290
Bordscheibe: Ø520		
FG.: 1620 kg		
a	neuen RA und Bordscheiben-Ø hinzugefügt	2011-03-30
Index	Änderung	Datum
Doppelmayr Innova Patent GmbH Rickenbacherstr. 8-10 A-6900 VÖLPERN/AUSTRIA		SB
Anlage		1/10
Auftrag		kg
BT-RB, Type-501C		2017-04-08 RE
310001286005970		a

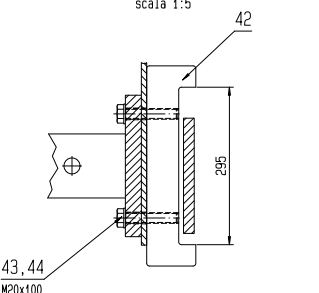
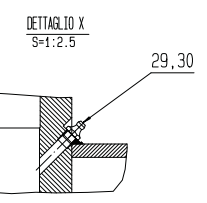


SEZIONE H-H
scala 1:5

VISTA N
scala 1:5

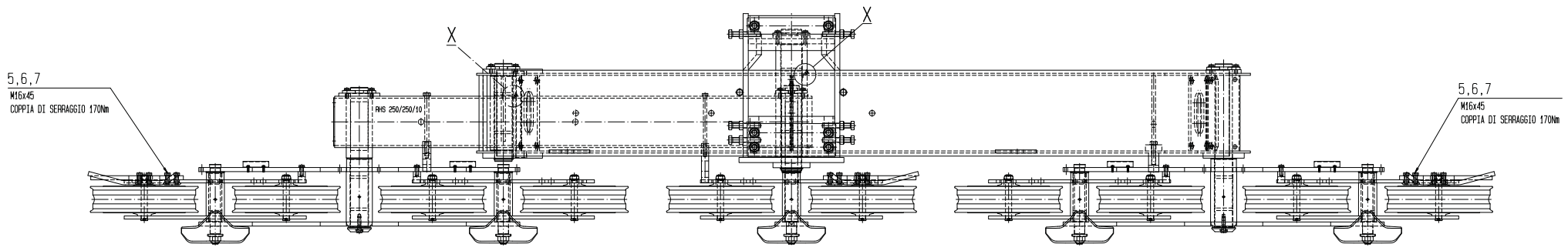


SEZIONE J-J
scala 1:5



VISTA P
scala 1:5

SEZIONE A-A
scala 1:5



SEZIONE I-I
scala 1:5

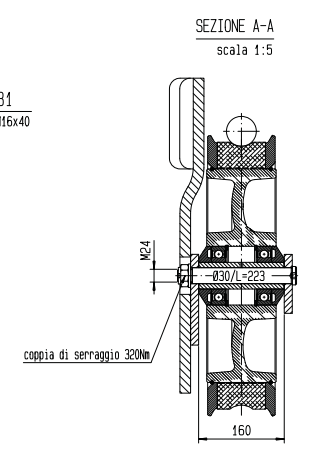
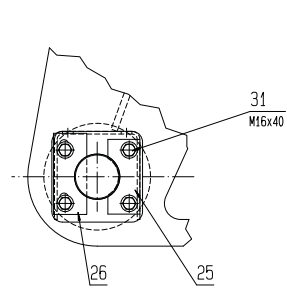
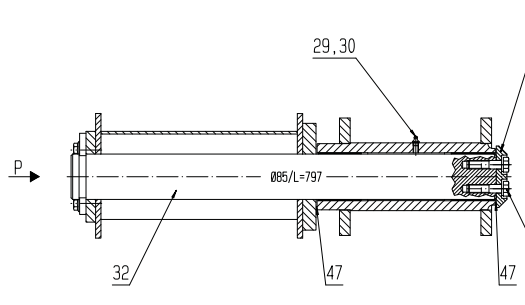
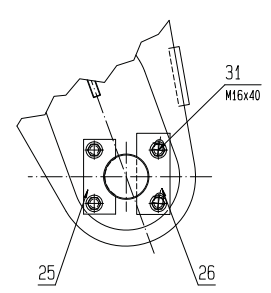
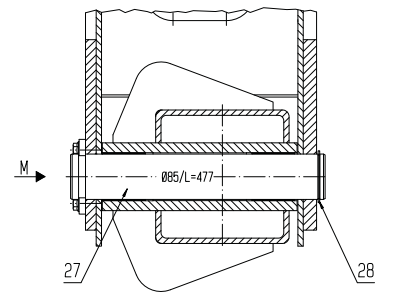
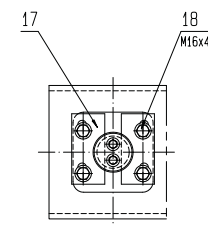
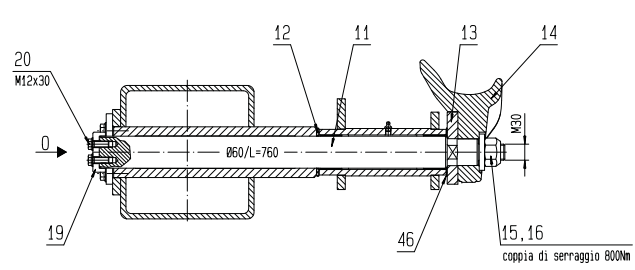
VISTA O
scala 1:5

SEZIONE F-F
scala 1:5

VISTA M
scala 1:5

SEZIONE K-K
scala 1:5

VISTA P
scala 1:5



SEZIONE B-B
scala 1:5

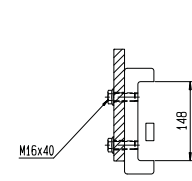
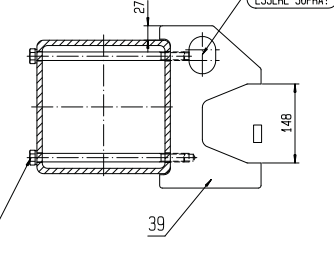
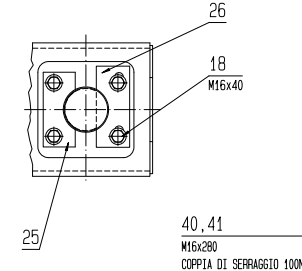
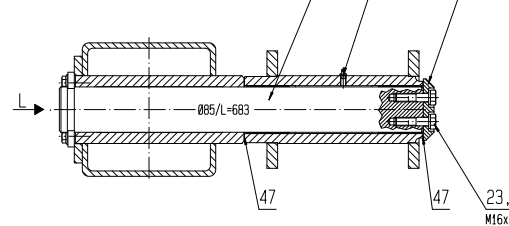
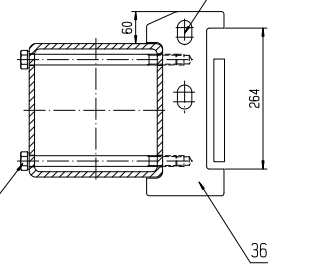
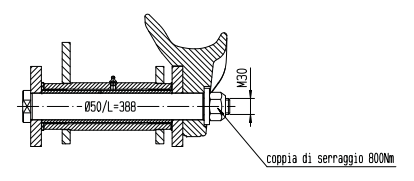
SEZIONE E-E
scala 1:5

SEZIONE D-D
scala 1:5

VISTA L
scala 1:5

SEZIONE G-G
scala 1:5

SEZIONE C-C
scala 1:5

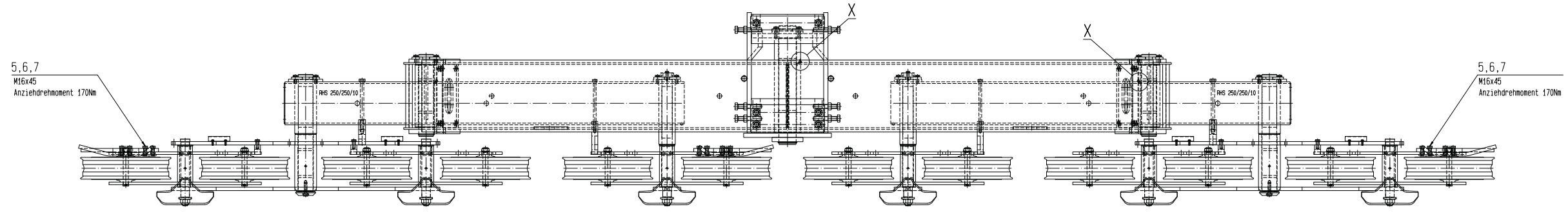
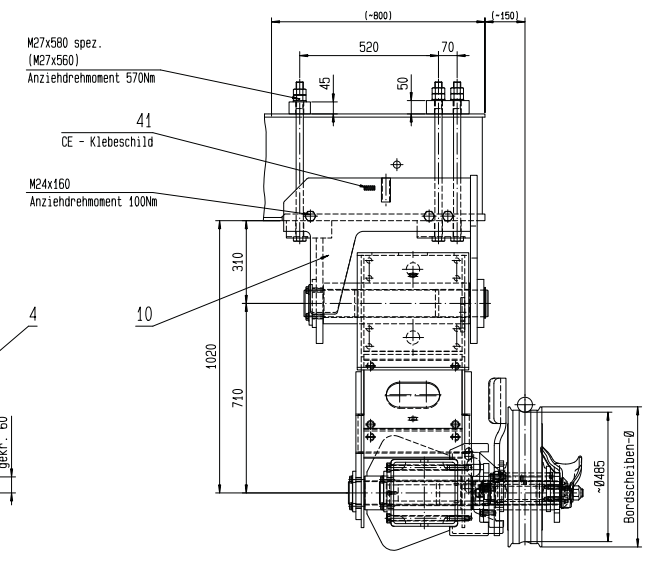
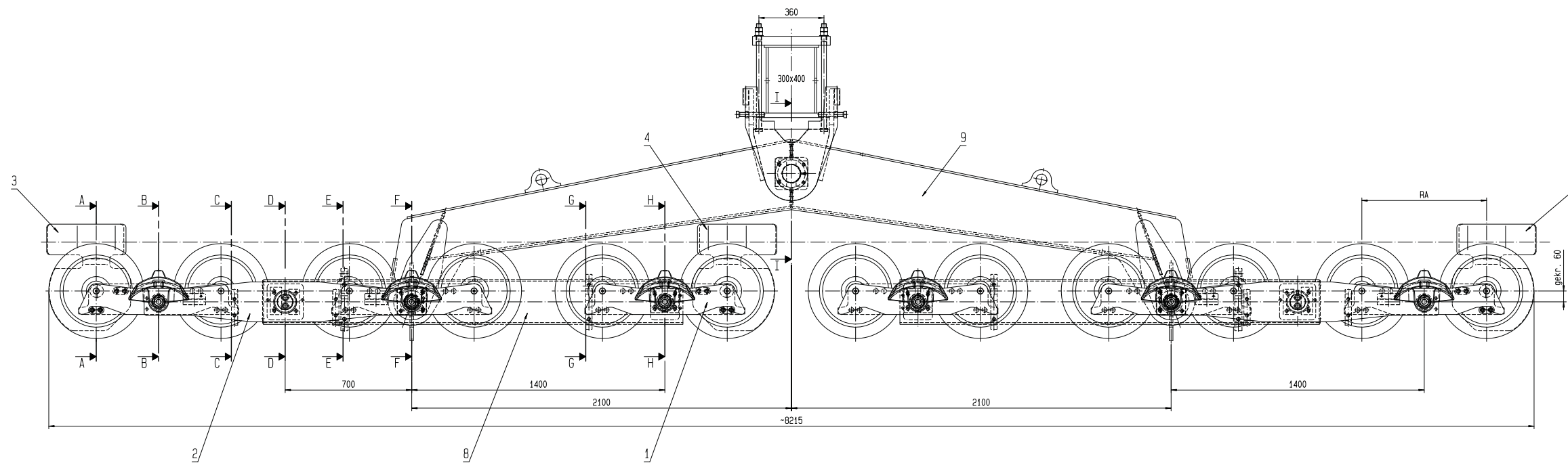


37, 38
M20x280
COPPIA DI SERRAGGIO 100Nm

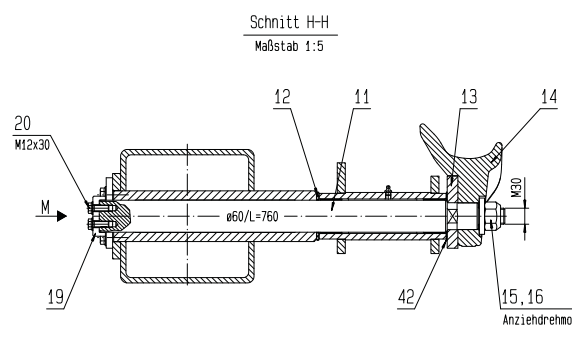
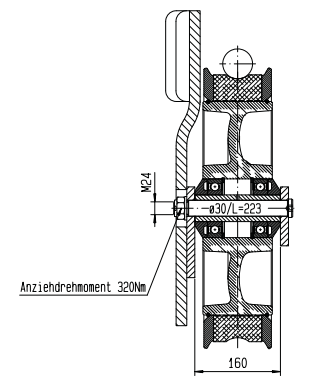
40, 41
M16x280
COPPIA DI SERRAGGIO 100Nm

La viteria senza indicazione della coppia di serraggio è da chiudere secondo la norma Doppelmayr!

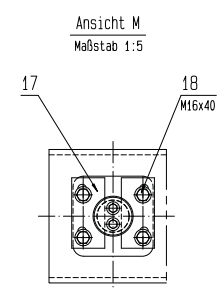
FG.: 2510 kg		ZINCATO		2-BILANCIERE: RA=647 FIANCATA: #530	11513803
A		neuen RA und Bordschleiben- u. Hitzzugefligt		2-BILANCIERE: RA=692 FIANCATA: #530	11109942
ID Doppelmayr		2011-03-30		2-BILANCIERE: RA=690 FIANCATA: #525	10487372
SB		SB		2-BILANCIERE: RA=680 FIANCATA: #520	10487375
1/10		2017-06-06			
10A-RU, TIPO-501C		kg			
11644455		310001316005970			



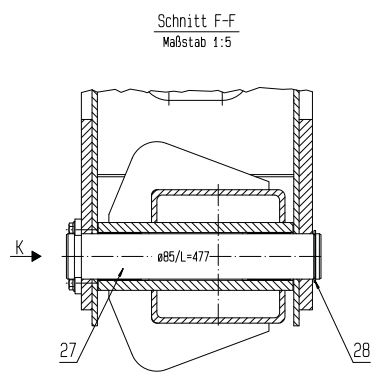
Schnitt A-A
Maßstab 1:5



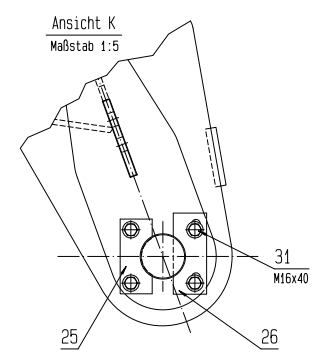
Schnitt H-H
Maßstab 1:5



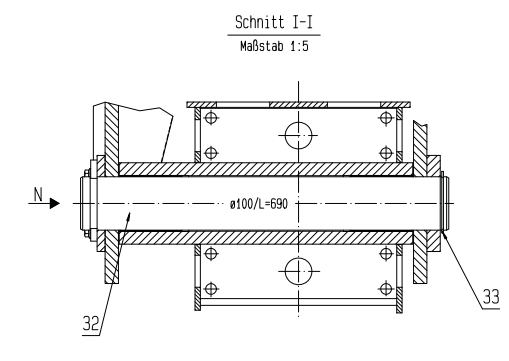
Ansicht M
Maßstab 1:5



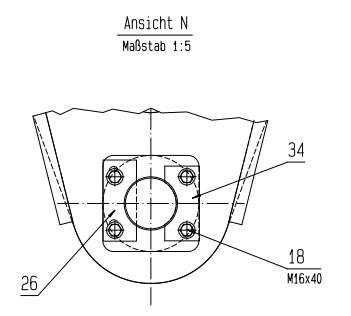
Schnitt F-F
Maßstab 1:5



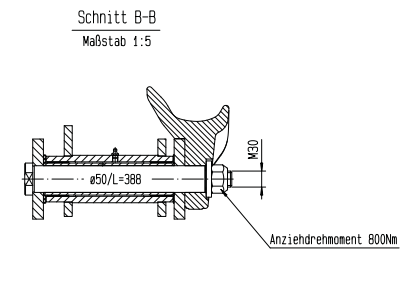
Ansicht K
Maßstab 1:5



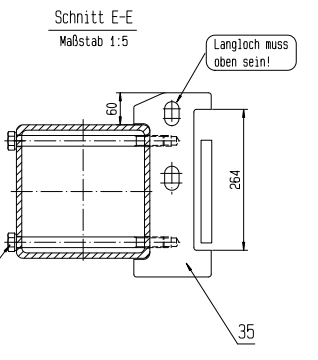
Schnitt I-I
Maßstab 1:5



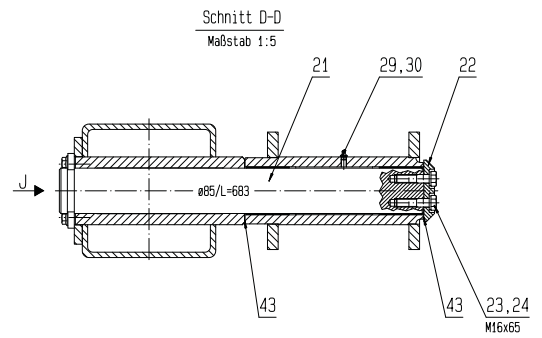
Ansicht N
Maßstab 1:5



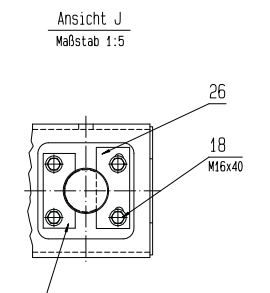
Schnitt B-B
Maßstab 1:5



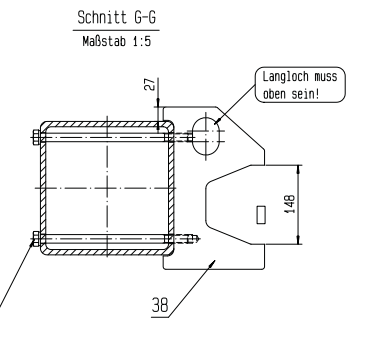
Schnitt E-E
Maßstab 1:5



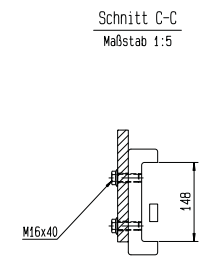
Schnitt D-D
Maßstab 1:5



Ansicht J
Maßstab 1:5

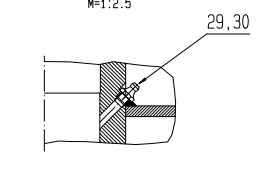


Schnitt G-G
Maßstab 1:5



Schnitt C-C
Maßstab 1:5

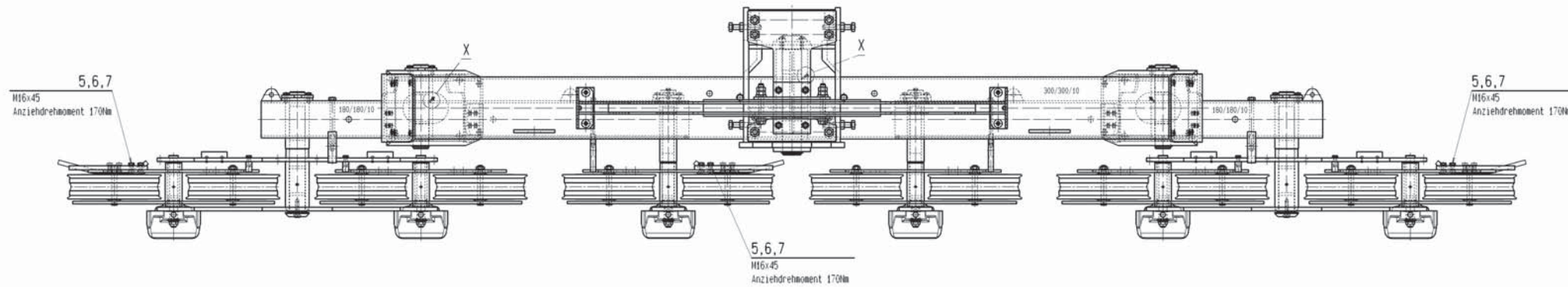
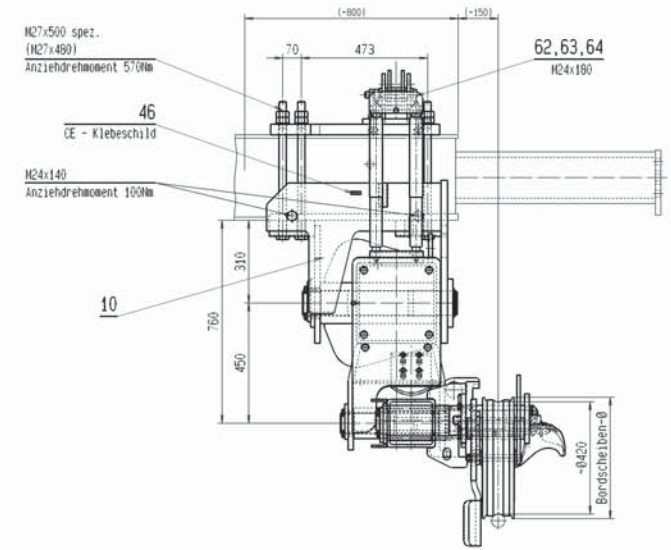
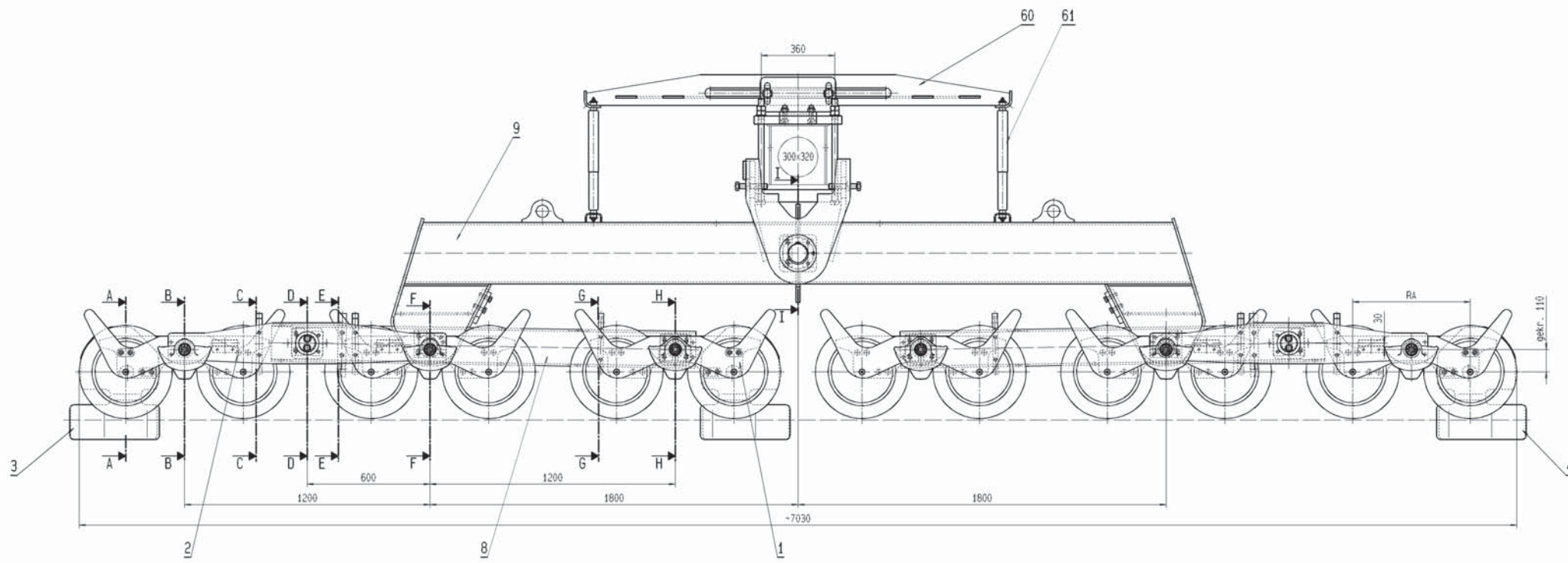
Detail X
M=1:2,5



Schraubenverbindungen, bei denen kein Anziehdrehmoment angegeben ist, sind nach Doppelmayer-Norm anzuziehen!

Konformität
10497457
10545586

FG.: 3070 kg		Zer-Wippe: RA-647		11513826
		Bordscheibe: $\phi 530$		11109948
		Zer-Wippe: RA-652		10487357
		Bordscheibe: $\phi 530$		10487357
		Zer-Wippe: RA-690		10487357
		Bordscheibe: $\phi 525$		10487357
		Zer-Wippe: RA-680		
		Bordscheibe: $\phi 520$		
a) neuem RA und Bordscheiben- ϕ hinzugefügt		2011-03-30		Liefer Status
b) Änderung		Detail		Name
ID Doppelmayer		SB		1/10
Auftrag		12T-RB, Type-501C		10487357
Antrag		2016-08-04		10487357
Antrag		10487357		10487357
Antrag		10487357		10487357



Ansicht M
Maßstab 1:5

Schnitt I-I
Maßstab 1:5

Ansicht K
Maßstab 1:5

Detail X
Maßstab 1:2

Schnitt H-H
Maßstab 1:5

Ansicht L
Maßstab 1:5

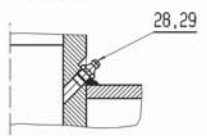
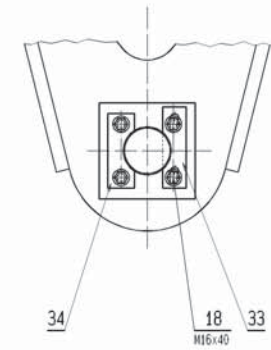
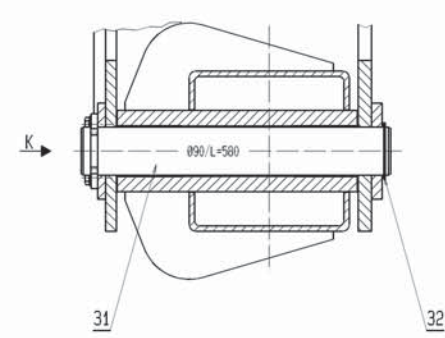
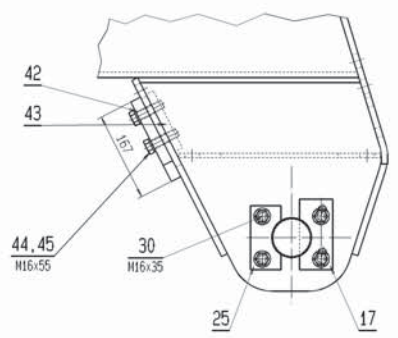
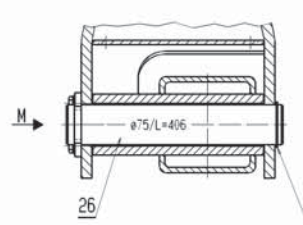
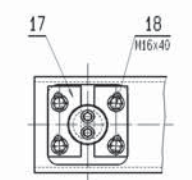
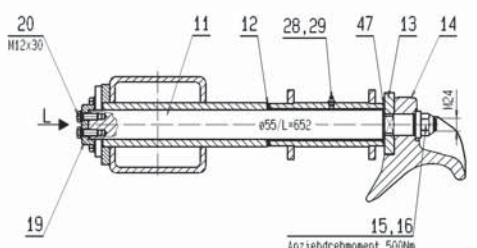
Schnitt F-F
Maßstab 1:5

Ansicht M
Maßstab 1:5

Schnitt I-I
Maßstab 1:5

Ansicht K
Maßstab 1:5

Detail X
Maßstab 1:2



Schnitt B-B
Maßstab 1:5

Schnitt E-E
Maßstab 1:5

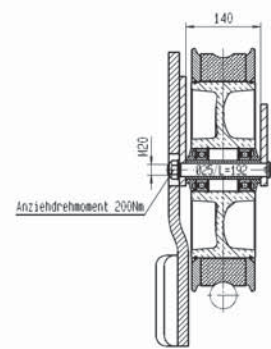
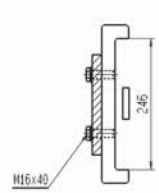
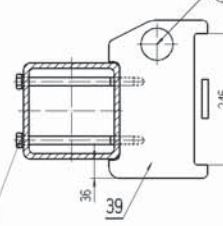
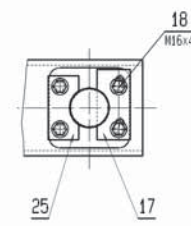
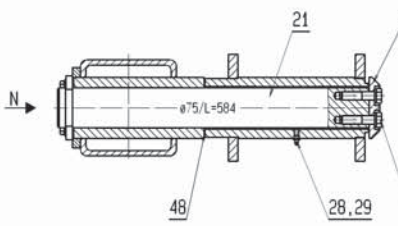
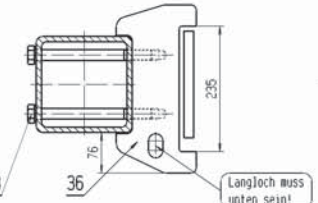
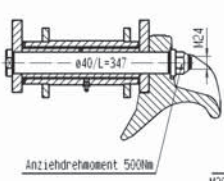
Schnitt D-D
Maßstab 1:5

Ansicht N
Maßstab 1:5

Schnitt G-G
Maßstab 1:5

Schnitt C-C
Maßstab 1:5

Schnitt A-A
Maßstab 1:5



Schraubenverbindungen, bei denen kein Anziehdrehmoment angegeben ist, sind nach Doppelmayr-Norm anzuziehen!

ab 2010	Zer-Klippe: R1=505	11161569
	Bordcheibe: ø460	10946974
	Zer-Klippe: R1=560	11328052
	Bordcheibe: ø460	10946975
	Zer-Klippe: R1=565	11312230
	Bordcheibe: ø455	10483892
	Zer-Klippe: R1=572	10483892
	Bordcheibe: ø450	10483892
	Zer-Klippe: R1=580	10483892
	Bordcheibe: ø450	10483892
	Zer-Klippe: R1=598	10483892
	Bordcheibe: ø455	10483892
	Zer-Klippe: R1=605	10483892
	Bordcheibe: ø455	10483892

Fs.: ~2410 kg

neue Rollenstände hinzugefügt

2009-12-04

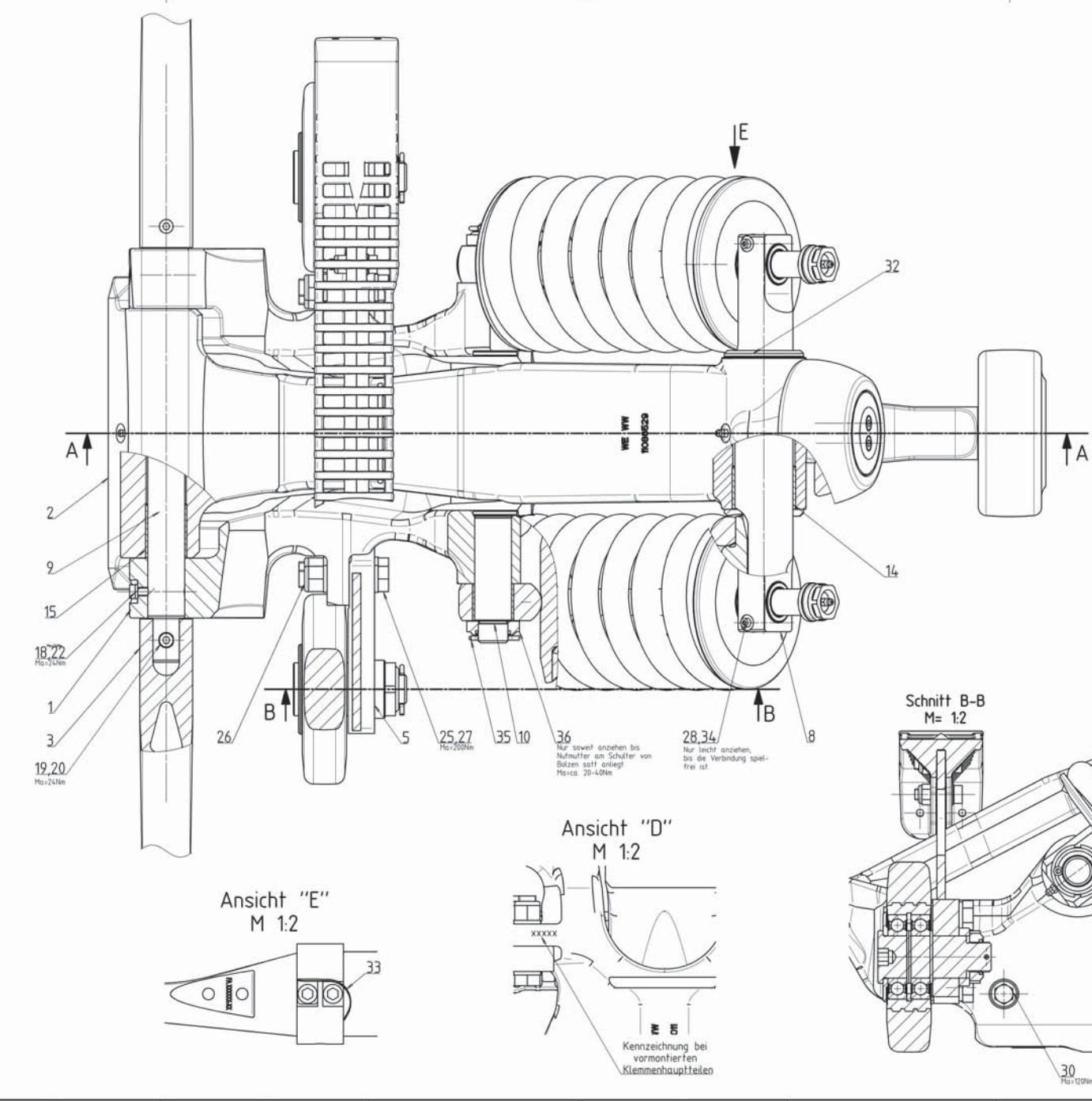
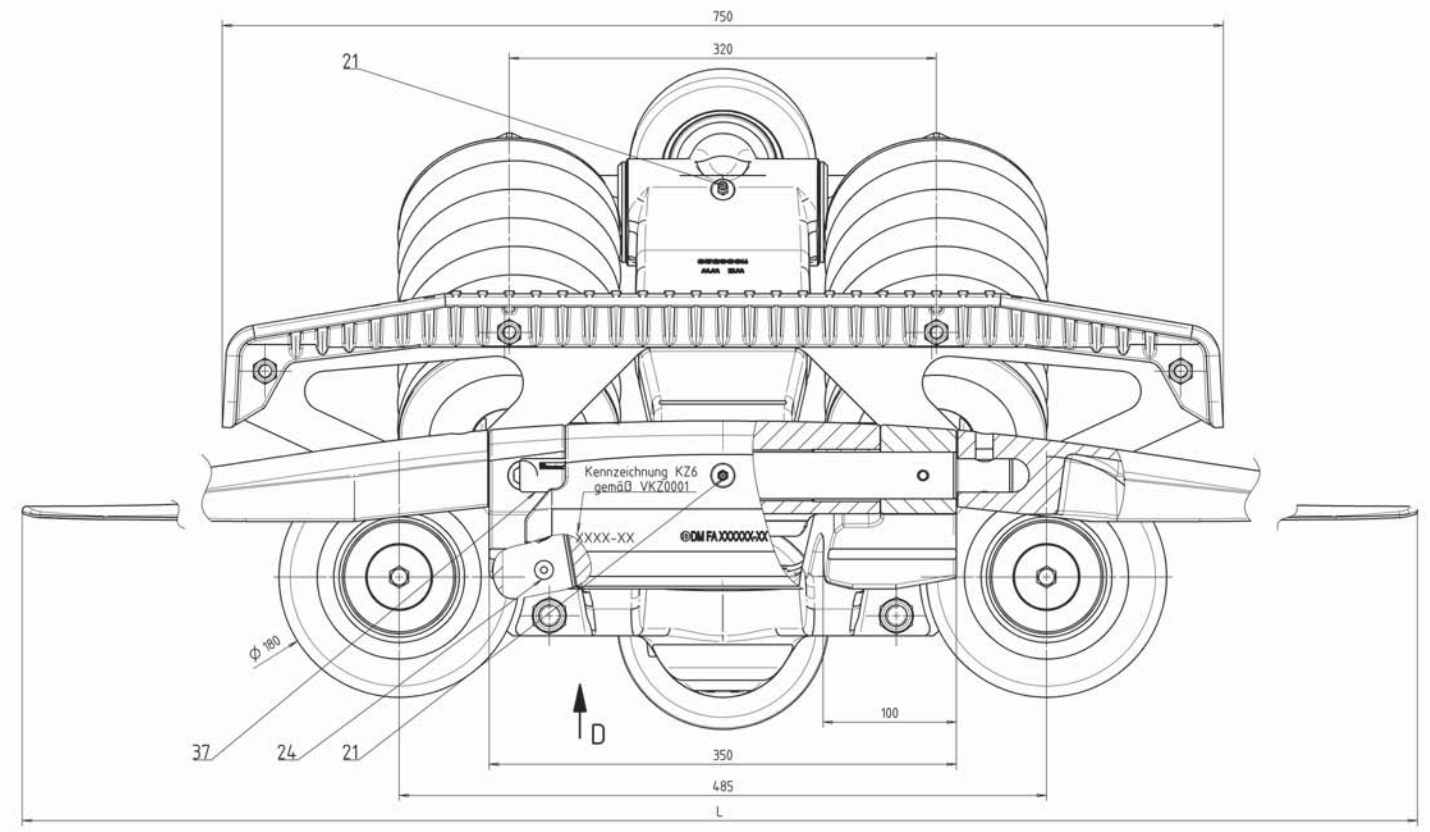
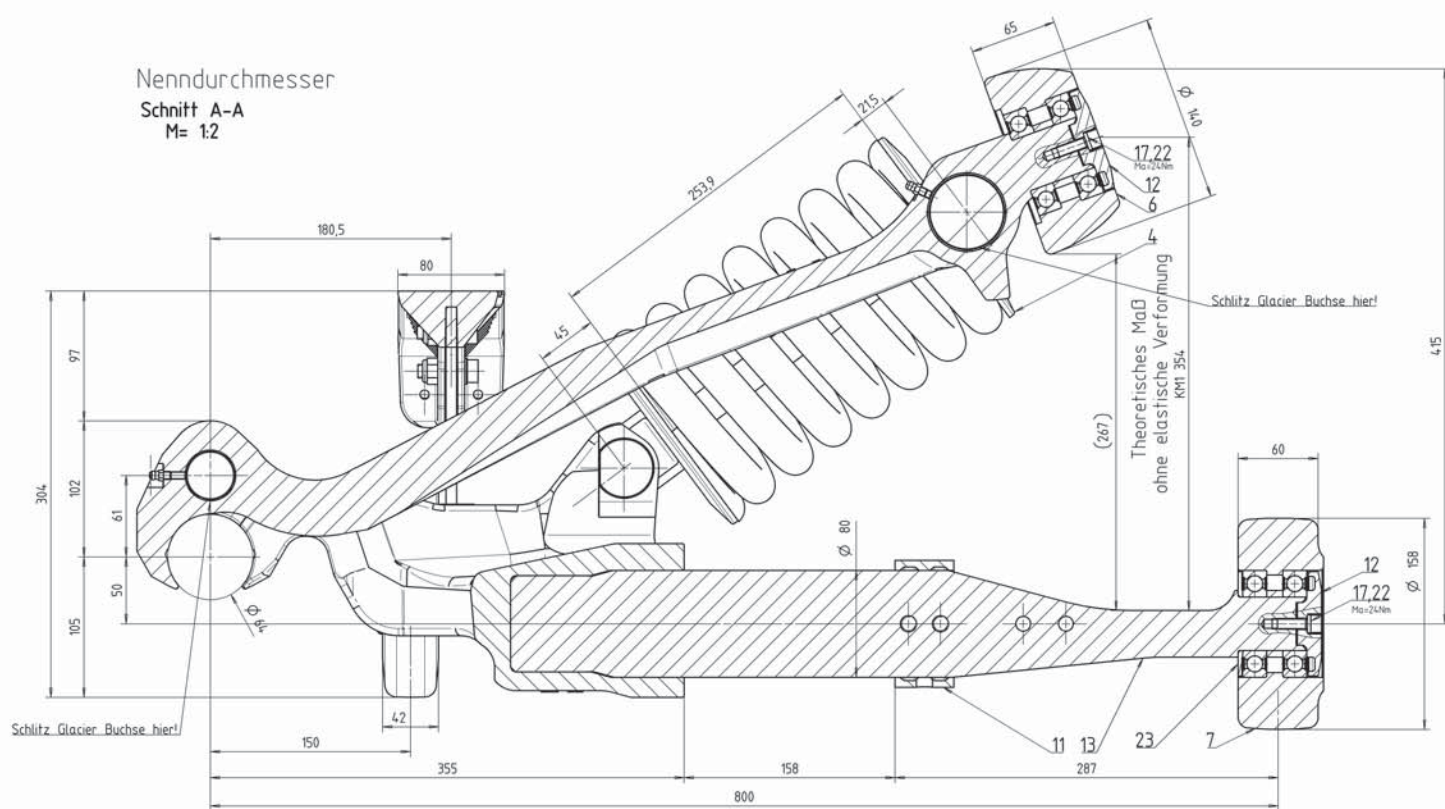
1/10

2017-06-06 RE

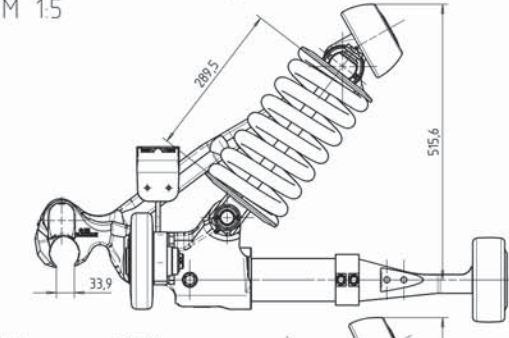
12N-RB, Type-420C

200058896004970

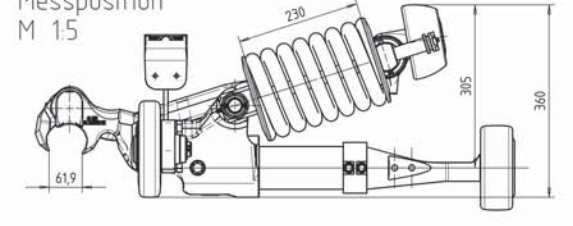
11538214



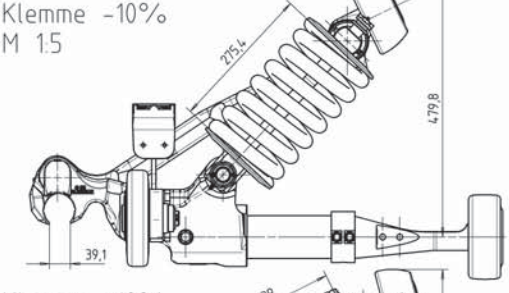
Klemme ohne Seil geschlossen
M 1,5



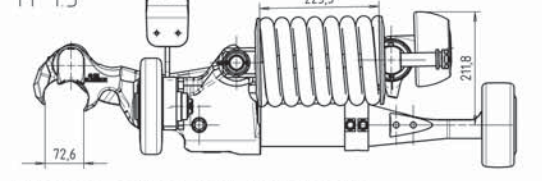
Messposition
M 1,5



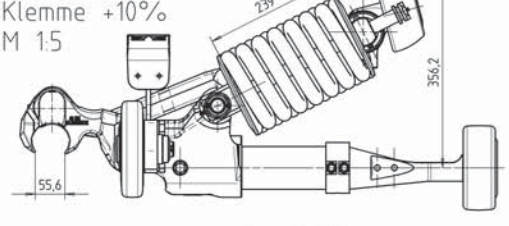
Klemme -10°
M 1,5



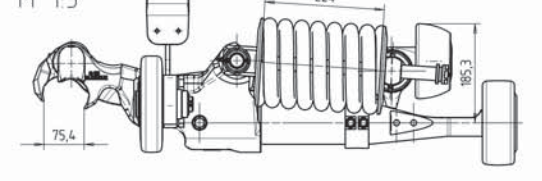
Klemme im Totpunkt
M 1,5



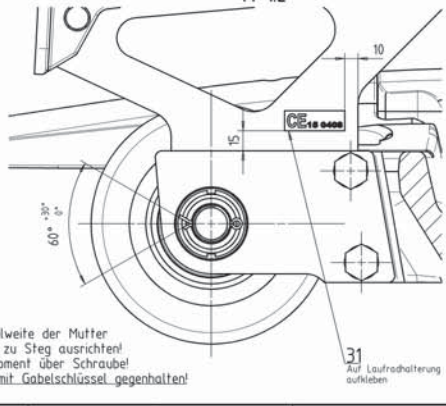
Klemme +10°
M 1,5



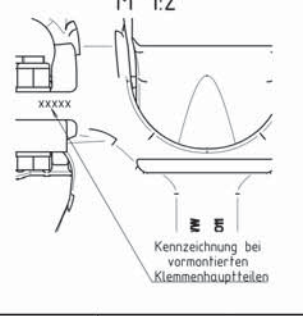
Klemme offen und verriegelt
M 1,5



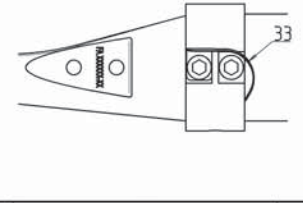
Ansicht "C"
M 1,2



Ansicht "D"
M 1,2



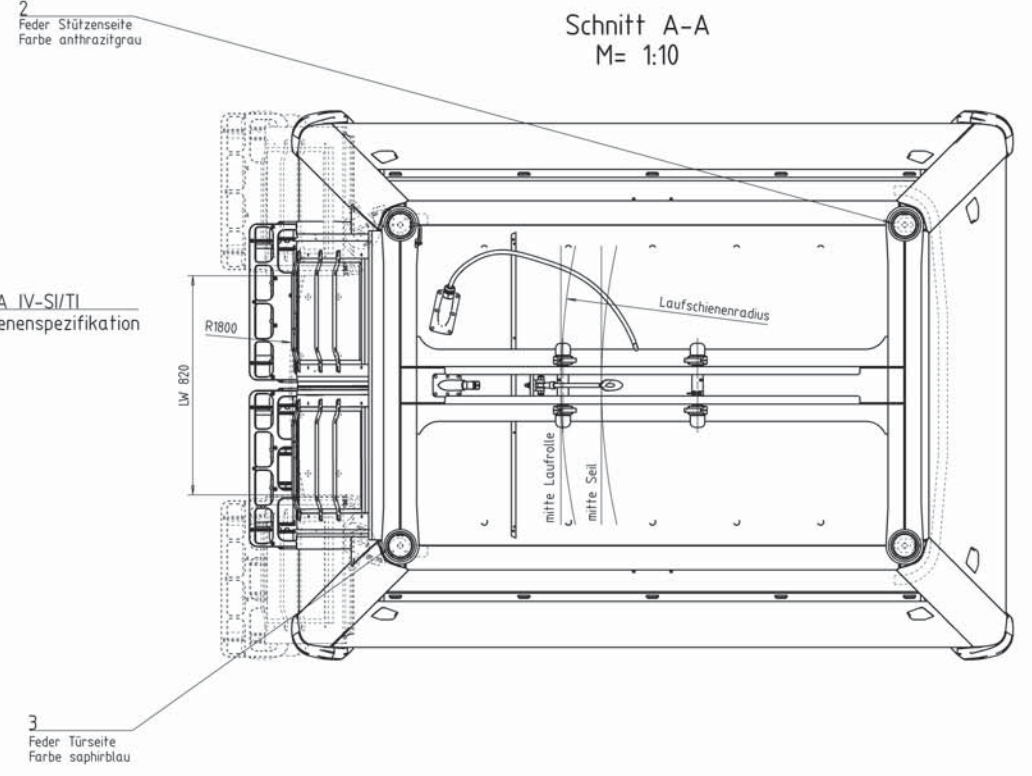
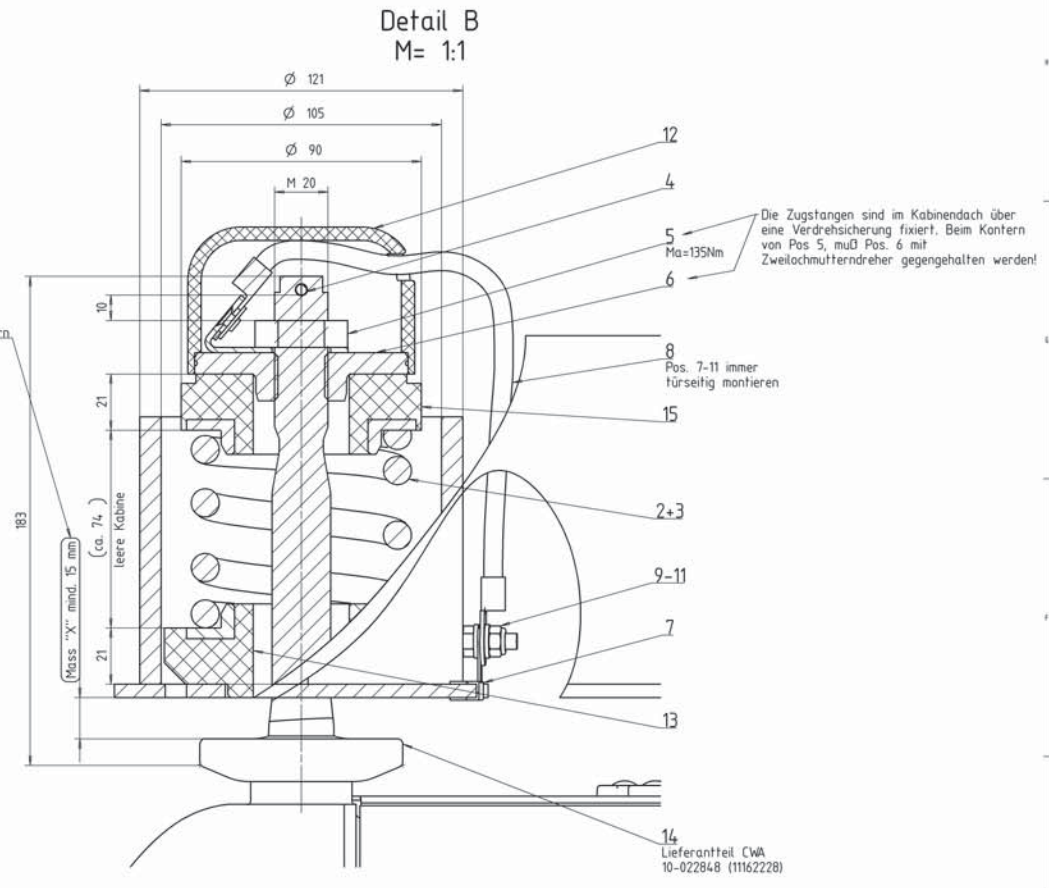
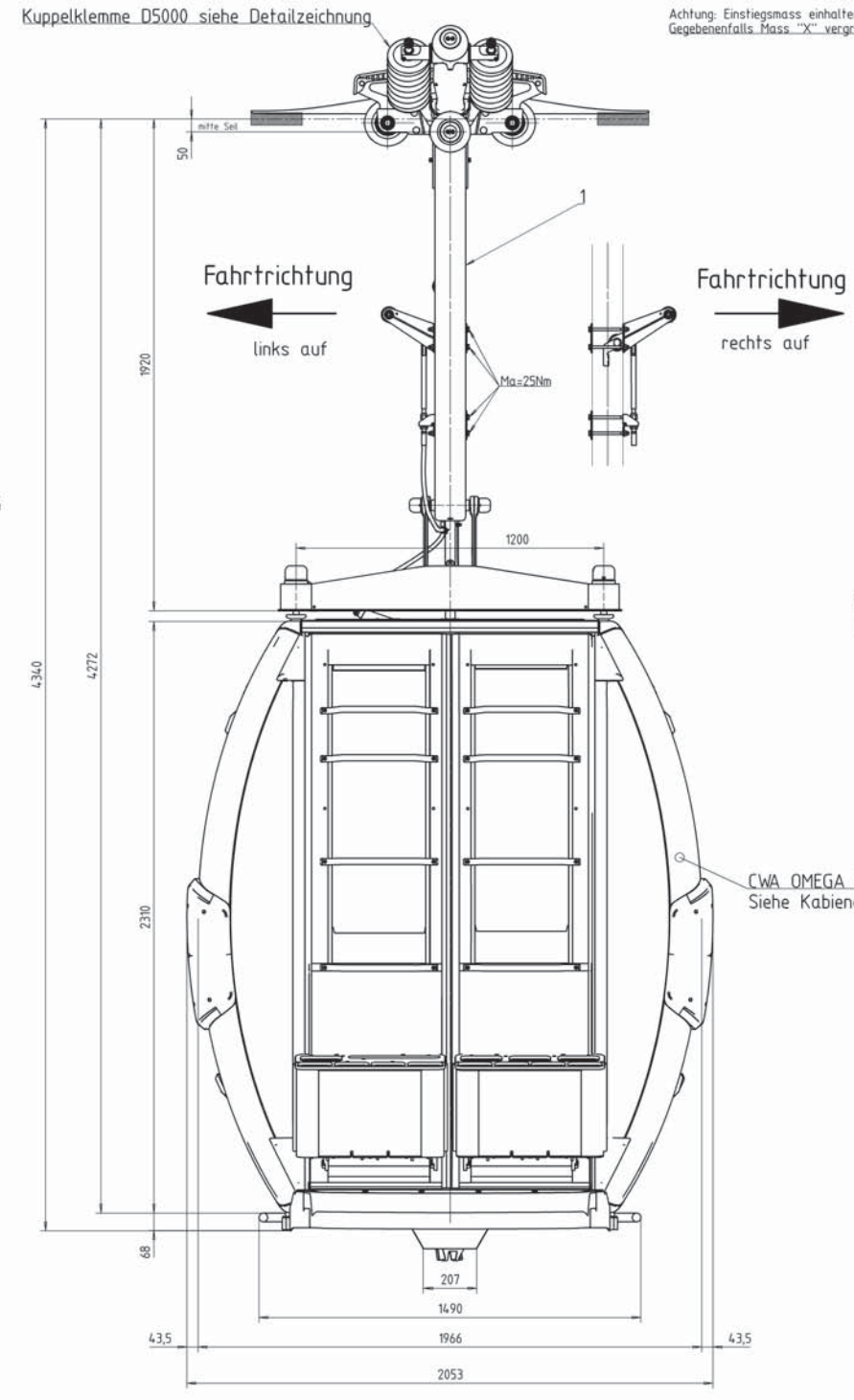
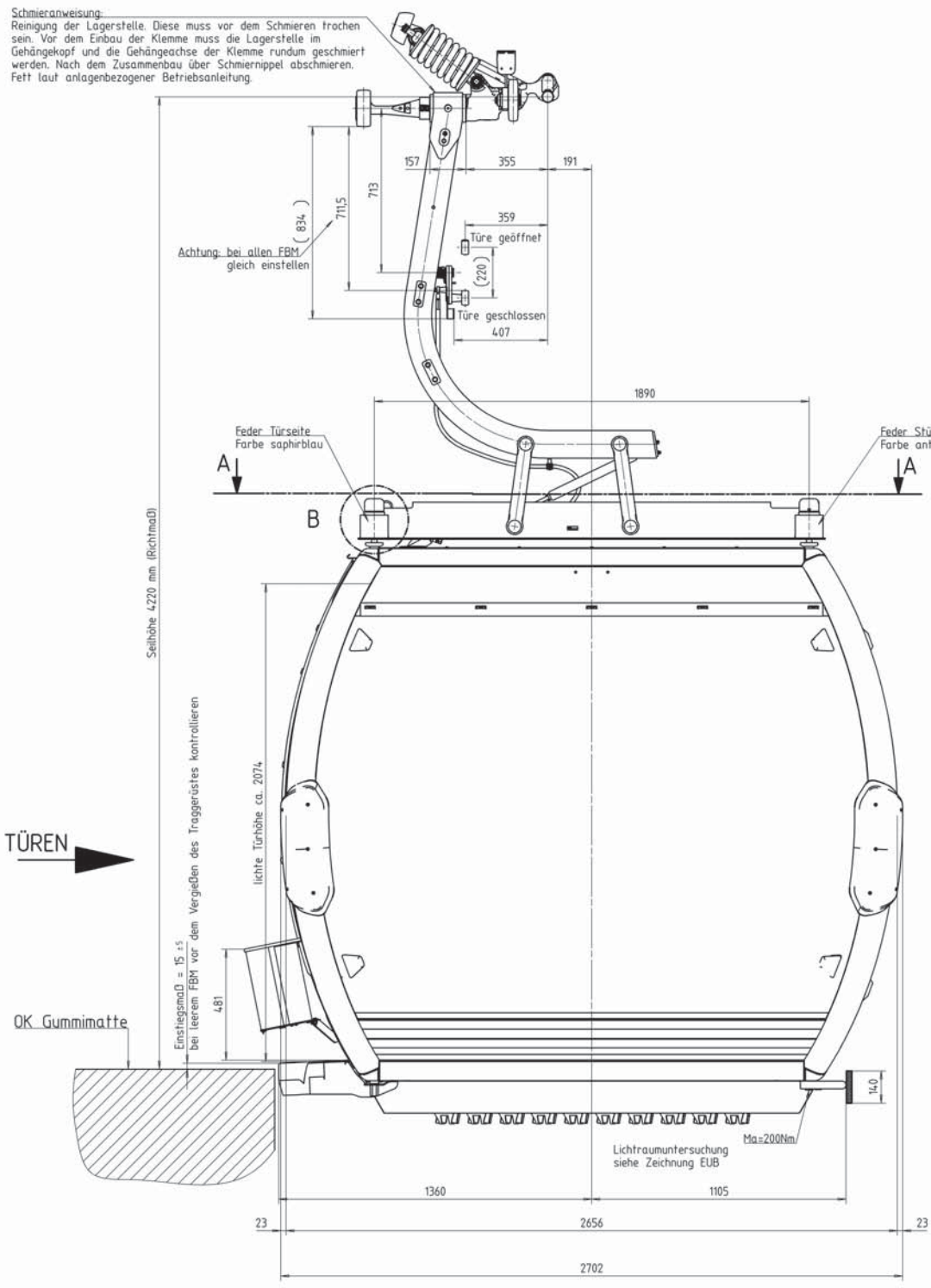
Ansicht "E"
M 1,2



Übersichtstabelle verschiedener DM-Auflaufzangen-Farbverfärbungen		114.35310
Ø 48 L=1372		11288934
Ø 50 L=1372		11288933
Ø 52 L=1372		11288932
Ø 54 L=1372		11288931
Ø 56 L=1372		11288930
Ø 58 L=1372		11288929
Ø 60 L=1372		11288928
Ø 62 L=1372		11288927
Ø 64 L=1372		11288926
Ø 48 L=952		11207461
Ø 50 L=952		11207460
Ø 52 L=952		11207459
Ø 54 L=952		11207458
Ø 56 L=952		11207457
Ø 58 L=952		11207456
Ø 60 L=952		11207455
Ø 62 L=952		11207454
Ø 64 L=952		11207453
Mutterfrei		11207216

Hersteller (Pkt. U) eingetragt	205-01-08	gn	
Pkt. A neu hier Pkt. U auf Distanz	205-01-04	DM	
Pkt. U neu hier Pkt. A auf Distanz	205-01-04	DM	
Schweißpunkt durch GIBER/428 ersetzt	11-01-11	DM	
Klemmbolzen, Klemmschraube DM Kehr			
Sicherung Riffkappe und Federkappe neu			
Mutterfrei			
Änderung	Datum	Name	Ausführung
Doppelmayr			
KUPPELKLEMMEN D5000-38			
Konformität	11424883		
20022995.110300			

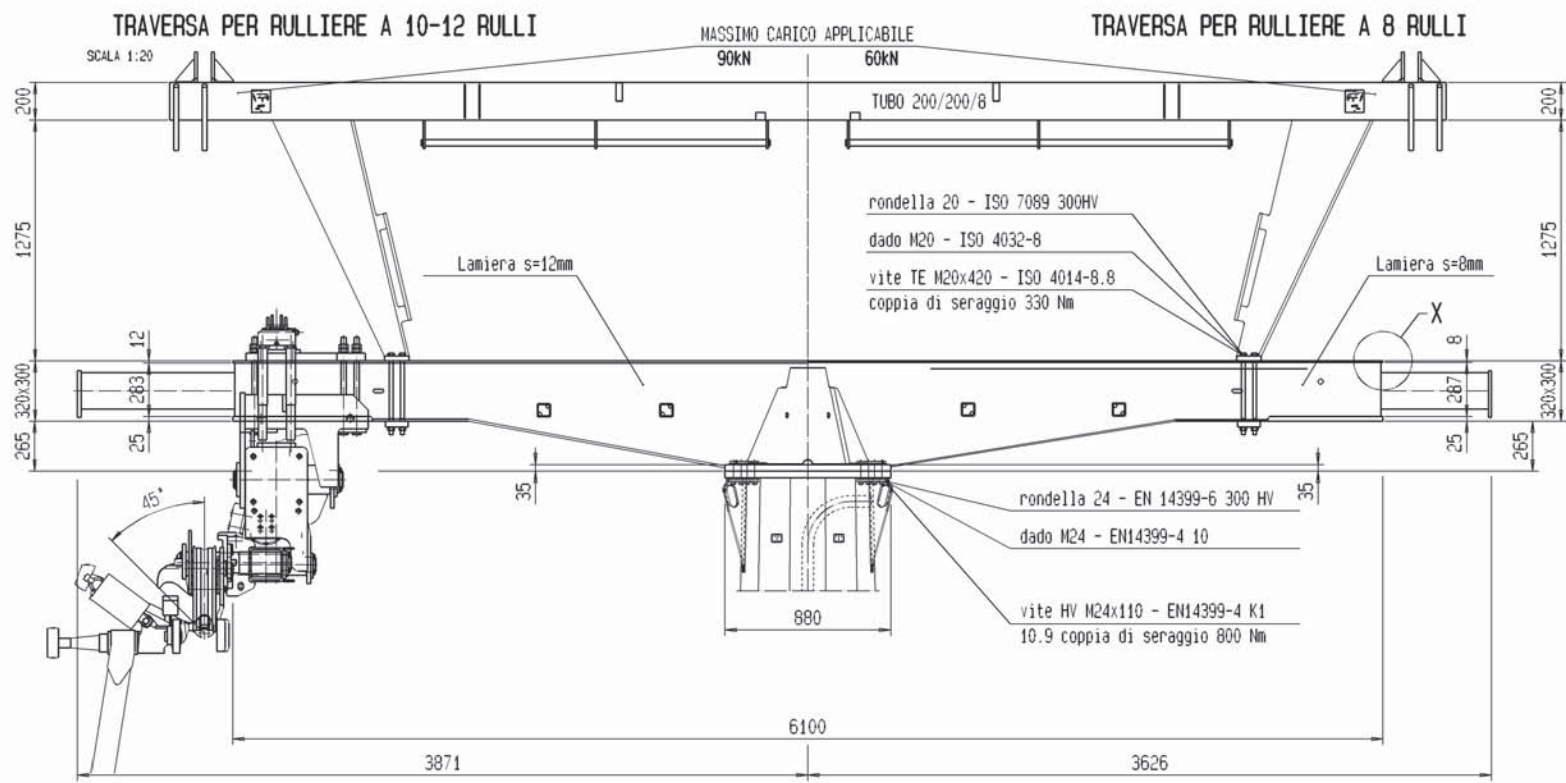
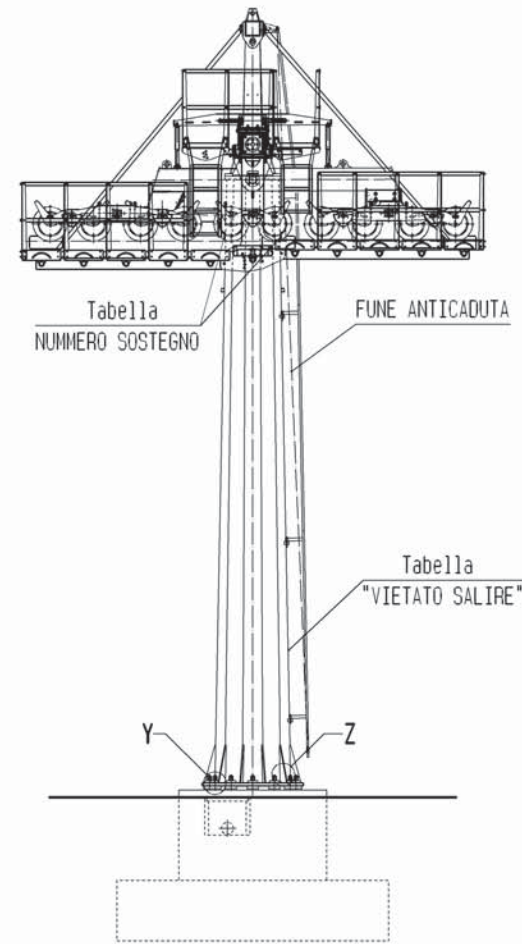
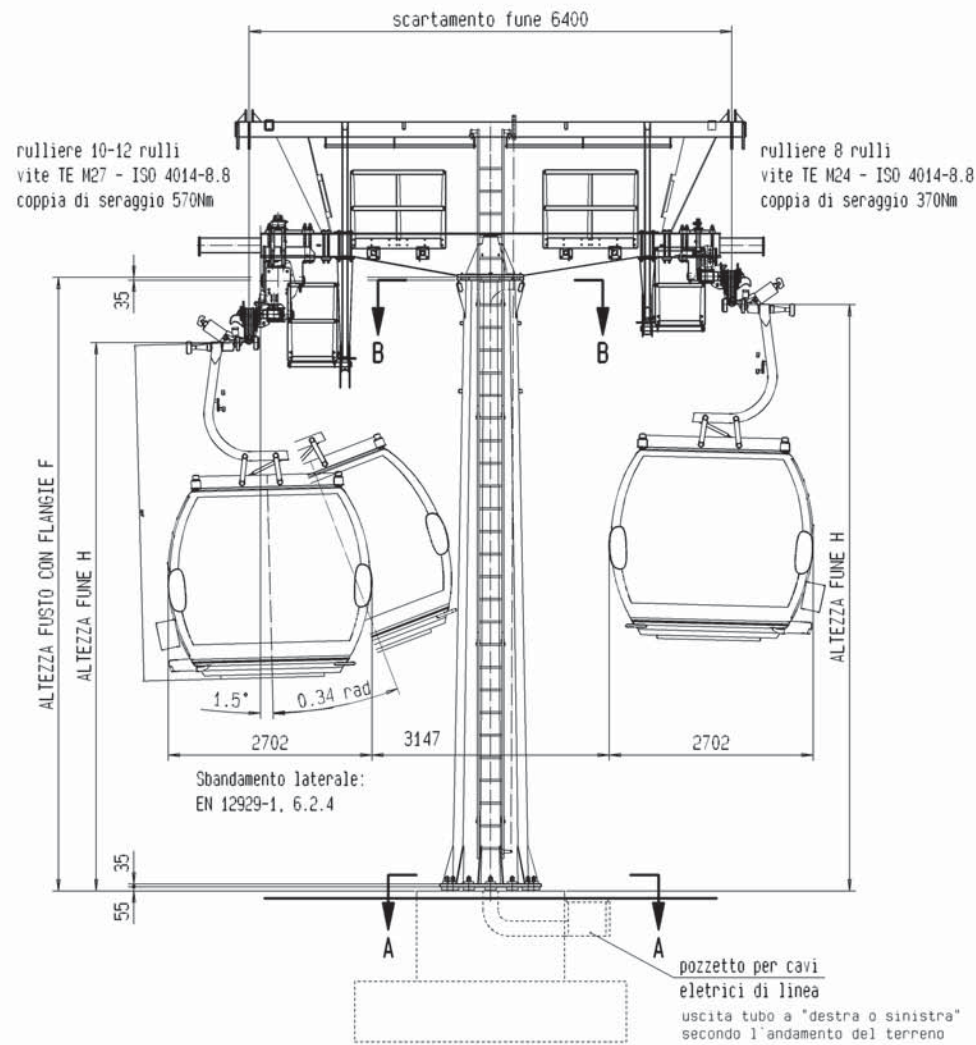
Vor dem Zusammenbau Lagerstellen mit Schmierstoff Interflon FG LT2 einschmieren, nach dem Zusammenbau Hohlräume über Schmierringe mit dem selben Schmierstoff füllen!



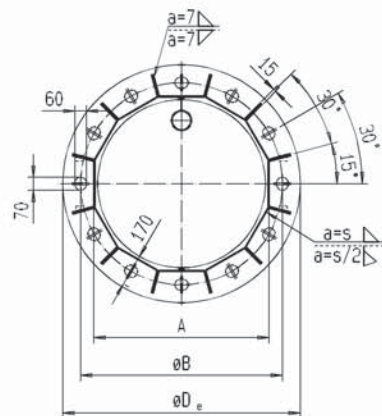
optional ohne Skiköcher

c) Maße der Fertigungsbildung angepasst		2013-05-28	inh.	Feuerverzinkt		11450389
b) Kabinendimensionen bereinigt		2013-05-28	inh.	Feuerverzinkt		11450389
a) Änderungen		Datum		Name		Aufzeichnung
Doppelmayr		Innovative Partner GmbH		1/10		SB
ALBA-CIAMPAC		HAA0004878		12er Express		AAA0004109
Linksauß		Rechtsauß		Salvenmoos		AAA0003238
Fahrzeug		DG10-CWA-QIV-SI-TI		Klemme D5000		Konformität 11424884
20022556/013360		20022556/013360		20028645/113300		11328590

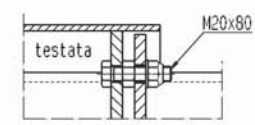
ALBA-CIAMPAC	HAA0004878	12er Express	AAA0004109
Linksauß	Rechtsauß	Salvenmoos	AAA0003238



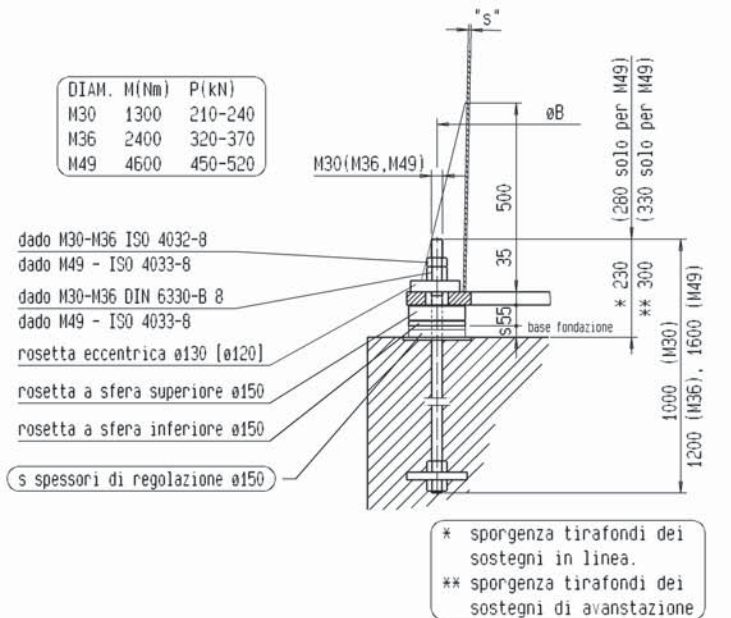
SCHNITT/SEZIONE A-A
MABTAB/SCALA 1:20



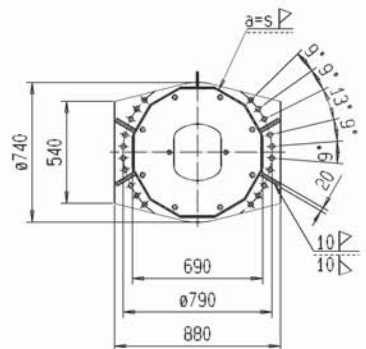
DETAIL/PARTICOLARE X
MABTAB/SCALA 1:5



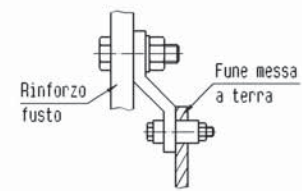
DETAIL/PARTICOLARE Y
MABTAB/SCALA 1:10



SCHNITT/SEZIONE C-C
MABTAB/SCALA 1:20

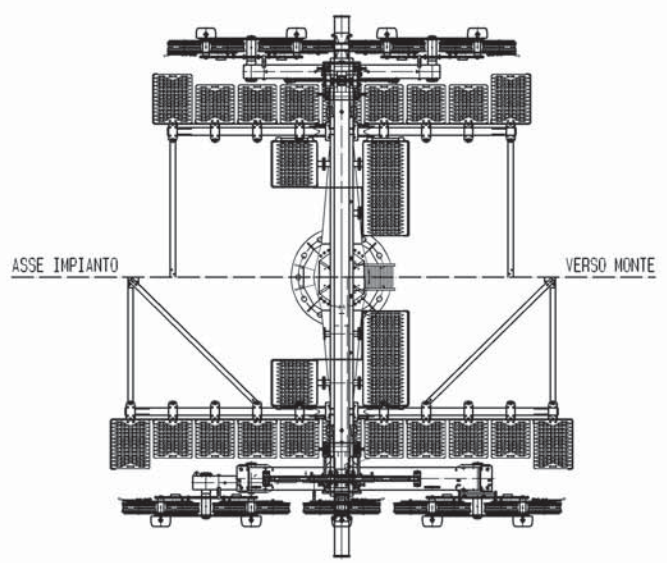


DETAIL/PARTICOLARE Z
MABTAB/SCALA 1:2.5



-tutta la struttura con lamiera S355J263 EN10025
-tirafondi M30-M36 con materiale 42CrMo4+T0 EN10083; M49 FUNDIA SB600
Per i tipi del fusto e i tirafondi utilizzati per l'impianto interessato vedi il calcolo dei sostegni.

Altezza nom. sostegno (m)	4	5	6	7	8	9	10	11	12	13
A (mm)	850	890	930	970	1010	1050	1090	1130	1170	1210
eB (mm)	990	1030	1070	1110	1150	1190	1230	1270	1310	1350
eDe (mm)	1180	1220	1260	1300	1340	1380	1420	1460	1500	1540
H fune 8R	3765	4765	5765	6765	7765	8765	9765	10765	11765	12835
H fune 10R-12R	3265	4265	5265	6265	7265	8265	9265	10265	11265	12335
F fusto tot.	4125	5125	6125	7125	8125	9125	10125	11125	12125	13195



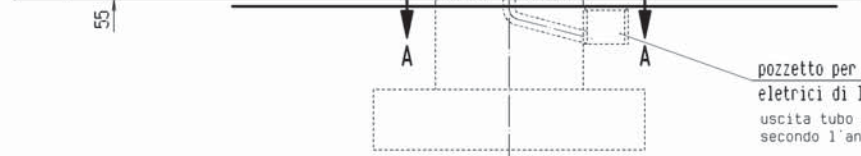
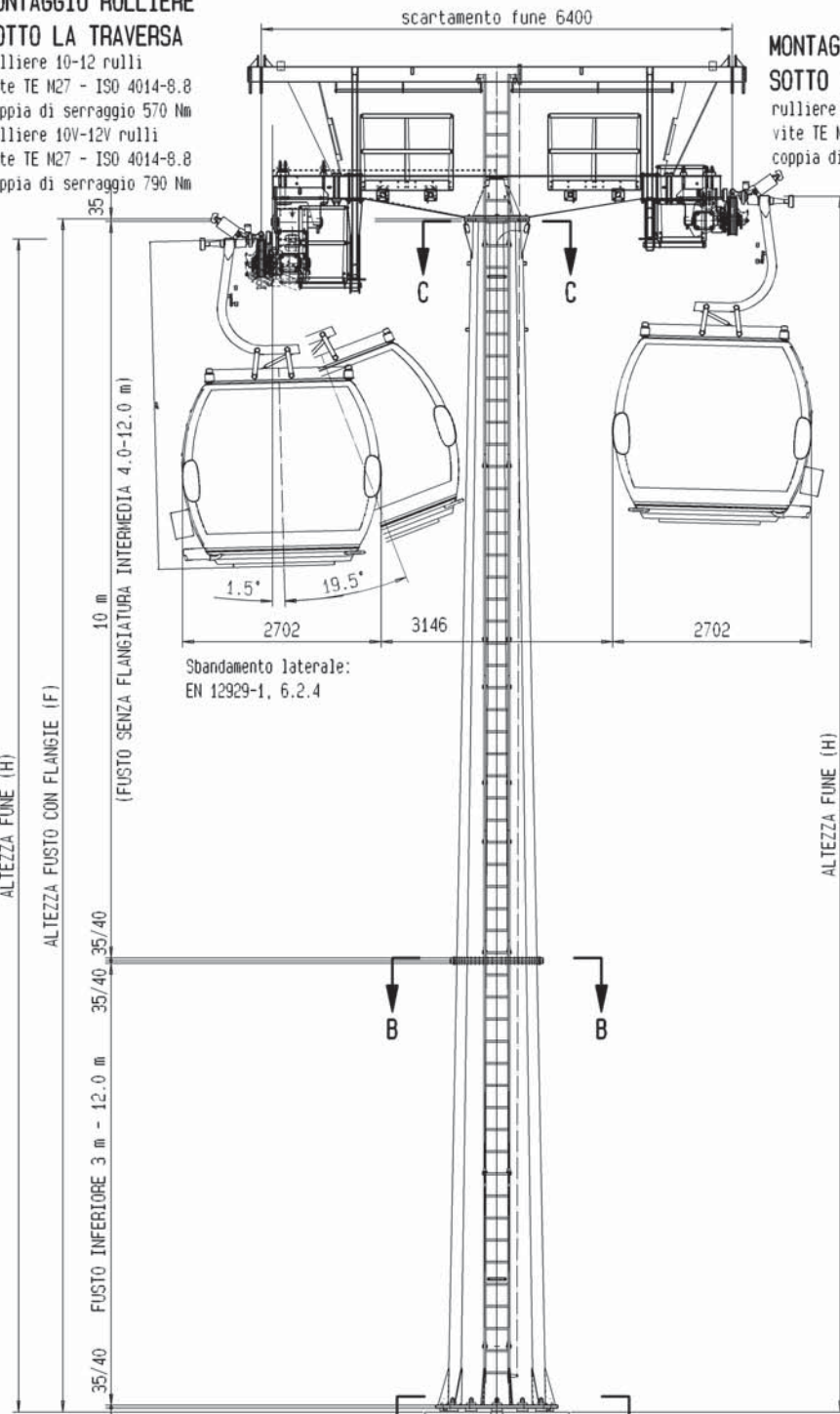
Indice Modifica	Data	Nome	Esecuzione	Ident. no.
Doppelmayr		Doppelmayr Italia srl Zona Industriale 14 I-39011 LANA (BZ)	Classe 0	1/50
Impianto	Scala	Dis.	Data	Nome
Ordine	1/50	17145NIH000100	2017-08-17	Mullner Jul
SOSTEGNO IN RITENUTA (690)		Nota di stampa	2017-08-03	
CABINOVIA IOMSD INTERVIA 6.4M		Fattore: 1.000	08:38:01	
SCHEMA DI MONTAGGIO		PS plotter: root		
CABINA CMA OMEGA IV-SI/TI/D LE		Disegno di origine		
17528NIH000100		Ident. no.		
17528NIH000100		Indice		

Questo disegno è di proprietà della ditta Doppelmayr Italia srl.
Non può essere riprodotto né divulgato senza la nostra autorizzazione.

MONTAGGIO RULLIERE

SOTTO LA TRAVERSA

rulliere 10-12 rulli
 vite TE M27 - ISO 4014-8.8
 coppia di serraggio 570 Nm
 rulliere 10V-12V rulli
 vite TE M27 - ISO 4014-8.8
 coppia di serraggio 790 Nm



ALTEZZA SOSTEGNO RAPPRESENTATO: 16m

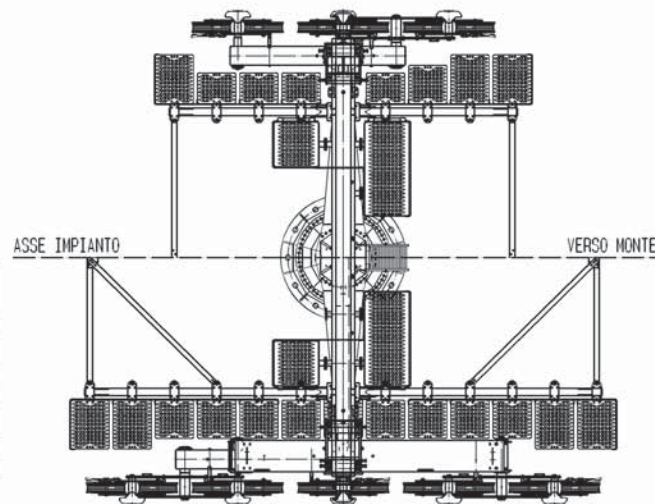
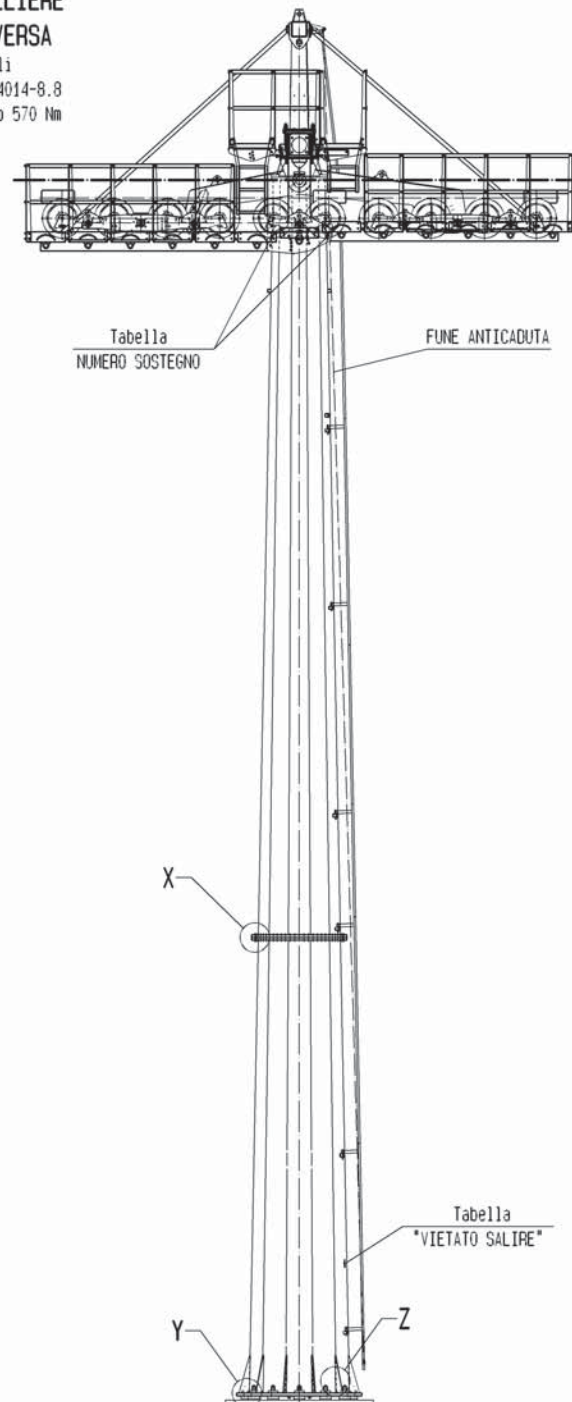
-tutta la struttura con lamiera S355J2G3 EN10025
 -tirafondi M30-M36 con materiale 42CrMo4+T0 EN10083; M49 FUNDIA SB600
 Per i tipi del fusto e i tirafondi utilizzati per l'impianto interessato
 vedi il calcolo dei sostegni.

Altezza nom. sostegno (m)	8	9	10	11	12	13	14	15	16	16,5	17	18	19	19 M49	26
A (mm)	1010	1050	1090	1130	1170	1210	1250	1290	1330	1350	1370	1410	1450	1450	1730
eB (mm)	1150	1190	1230	1270	1310	1350	1390	1430	1470	1510	1510	1550	1590	1630	1870
eDe (mm)	1340	1380	1420	1460	1500	1540	1580	1620	1660	1700	1700	1740	1780	1810	2060
H fune 4-8R	8430	9430	10430	11430	12430	13430	14430	15430	16430	17000	17500	18500	19500	19500	18500
H fune 10R	7850	8850	9850	10850	11850	12920	13920	14920	15920	16420	16920	17920	18920	18920	17920
H fune 12R	7700	8700	9700	10700	11700	12770	13770	14770	15770	16270	16770	17770	18770	18770	17770
F fusto tot.	8125	9125	10125	11125	12125	13195	14195	15195	16195	16695	17195	18195	19195	19195	18195

MONTAGGIO RULLIERE

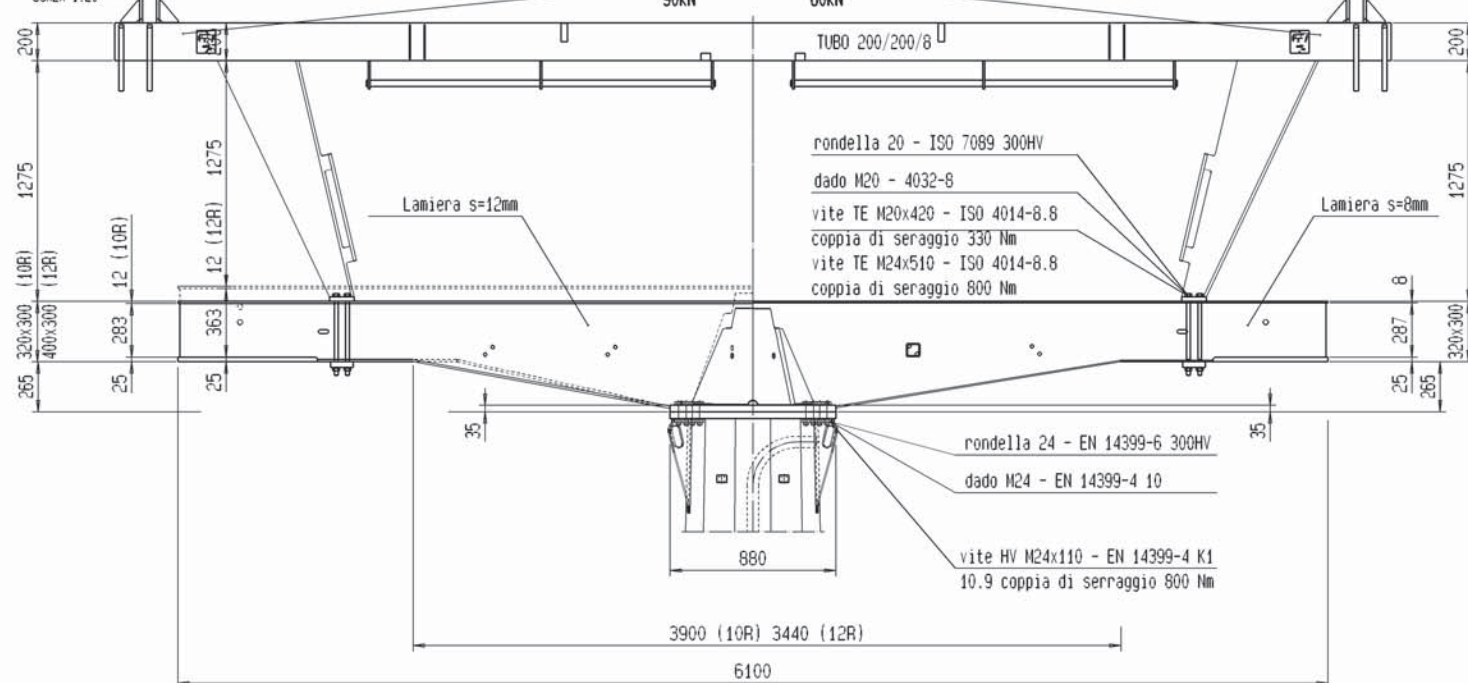
SOTTO LA TRAVERSA

rulliere 4-6-8 rulli
 vite TE M27 - ISO 4014-8.8
 coppia di serraggio 570 Nm



TRAVERSA PER RULLIERE A 10-12 RULLI

SCALA 1:20



TRAVERSA PER RULLIERE A 6-8 RULLI

MASSIMO CARICO APPLICABILE

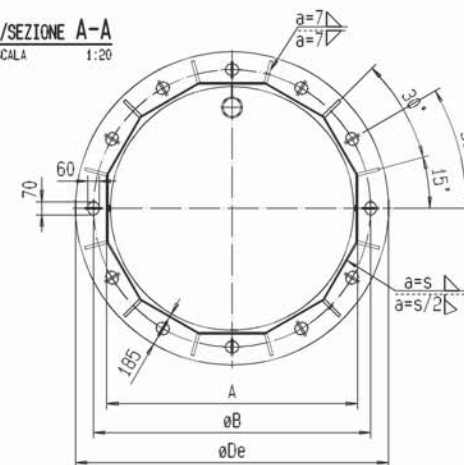
90kN 60kN

rondella 20 - ISO 7089 300HV
 dado M20 - 4032-8
 vite TE M20x420 - ISO 4014-8.8
 coppia di serraggio 330 Nm
 vite TE M24x510 - ISO 4014-8.8
 coppia di serraggio 800 Nm

rondella 24 - EN 14399-6 300HV
 dado M24 - EN 14399-4 10
 vite HV M24x110 - EN 14399-4 K1
 10.9 coppia di serraggio 800 Nm

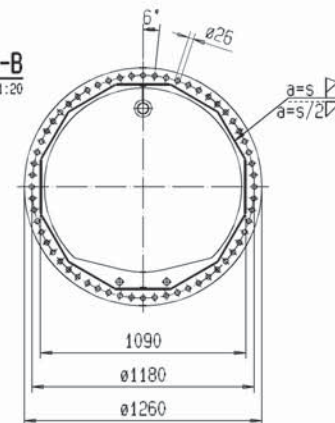
SCHNITT/SEZIONE A-A

MABTAB/SCALA 1:20



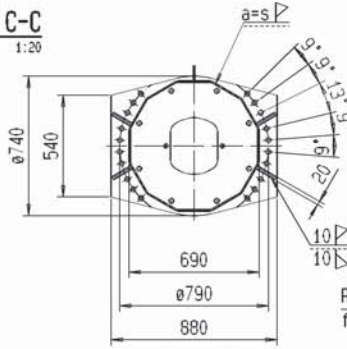
SCHNITT/SEZIONE B-B

MABTAB/SCALA 1:20



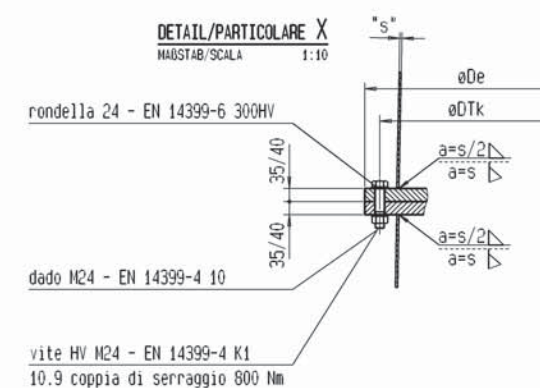
SCHNITT/SEZIONE C-C

MABTAB/SCALA 1:20



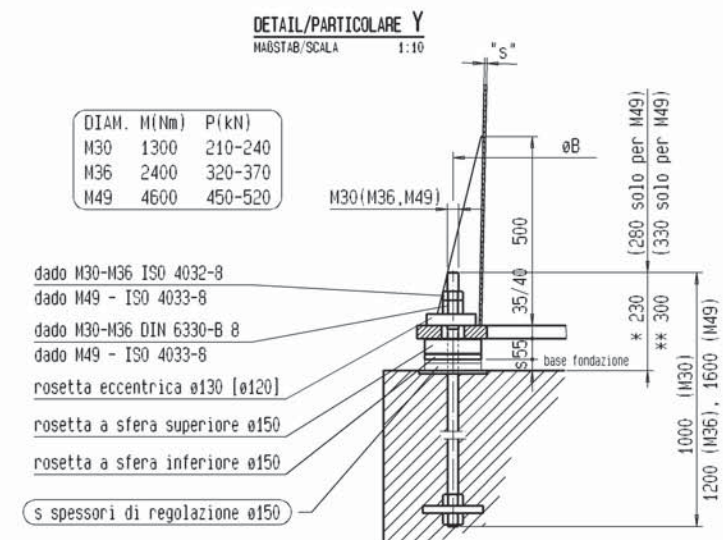
DETAIL/PARTICOLARE X

MABTAB/SCALA 1:10



DETAIL/PARTICOLARE Y

MABTAB/SCALA 1:10



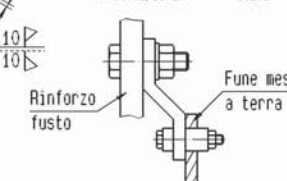
DIAM. M(Nm)	P(kN)
M30	1300 210-240
M36	2400 320-370
M49	4600 450-520

dado M30-M36 ISO 4032-8
 dado M49 - ISO 4033-8
 dado M30-M36 DIN 6330-B 8
 dado M49 - ISO 4033-8
 rosetta eccentrica ø130 [ø120]
 rosetta a sfera superiore ø150
 rosetta a sfera inferiore ø150
 s spessori di regolazione ø150

* sporgenza tirafondi dei sostegni in linea.
 ** sporgenza tirafondi dei sostegni di avanzazione

DETAIL/PARTICOLARE Z

MABTAB/SCALA 1:2.5



Indice	Modifica	Data	Nome	Esecuzione	Ident. no.
Doppelmayr		Doppelmayr Italia srl		Scala 1/50	
Doppelmayer		Zona Industriale 14		Data 2017-08-17	
1-39011 LWR (RE)				Nome Muller J. J.	
Fattore: 1.000				Data 2017-08-03	
Note di stampa				08:52:07	
2017-08-04 RE				Ident. no.	
PS plotter: root				17531NIH000100	
SOSTEGNO IN APPOGGIO (690)				Ident. no.	
CABINOVIA 10MGD INTERVIA 6.4M				17531NIH000100	
SCHEMA DI MONTAGGIO				Ident. no.	
CABINA CMA OMEGA IV-SI/TI/D LE				17531NIH000100	
Questo disegno è di proprietà della ditta Doppelmayr Italia srl.					
Non può essere riprodotto né divulgato senza la nostra autorizzazione.					