



**ICM Italia General Contractor Srl**

**WALTHERPARK - KAUFHAUS BOZEN**

**UVS – SIA**

**Anlage - Allegato A004-1:  
Arbeitsfasen Infrastrukturprojekt  
Fasi di lavoro progetto infrastrutture**

Antragsteller:  
Richiedente: **KHB  
GmbH**

Projektanten:  
Progettisti:



ICM Italia General Contractor SRL

**in.ge.na.**

Ingenieurwesen • Geologie • Naturschutzplanung  
Ingegneria • Geologia • Natura e Pianificazione

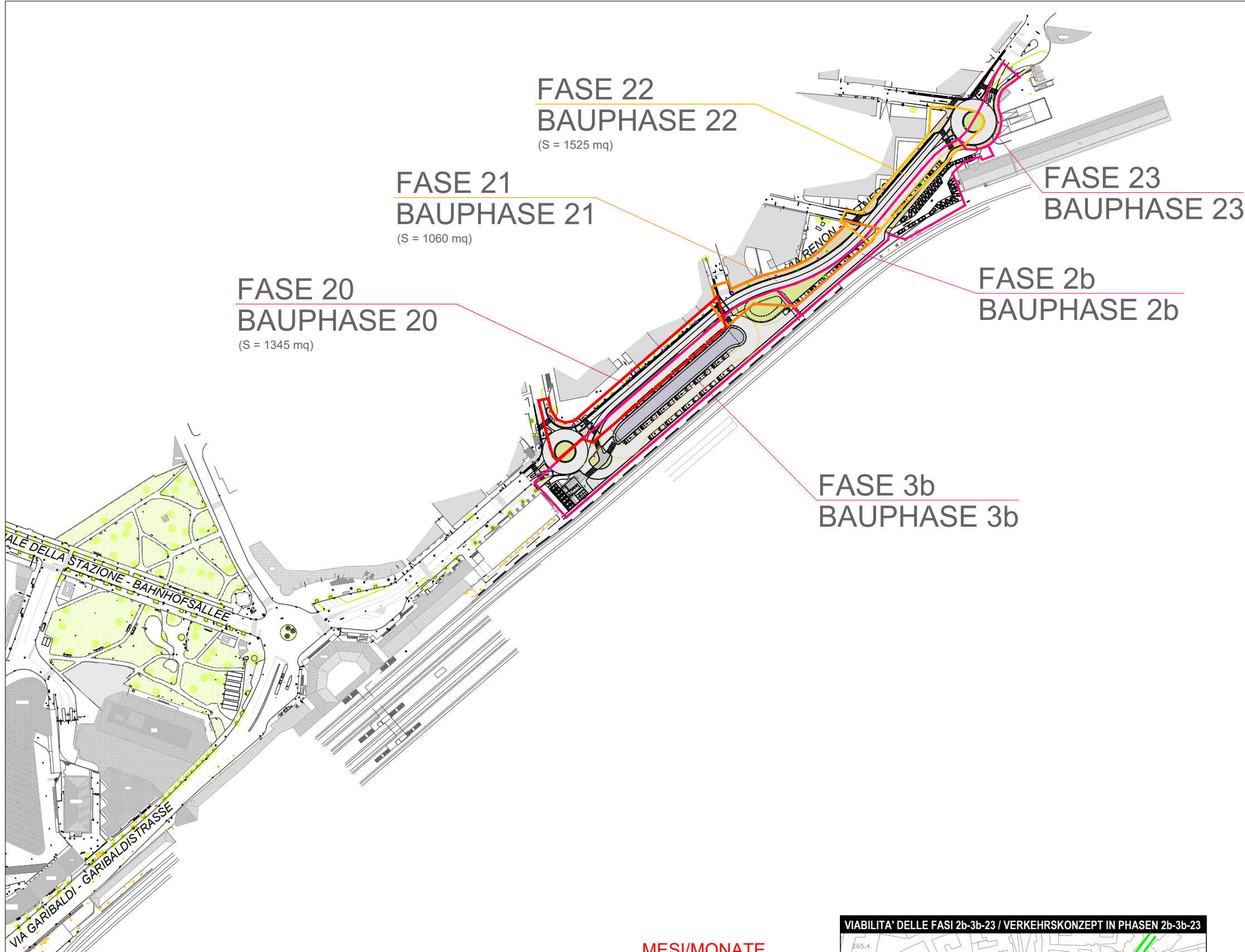
**DMA**

DMA Italia SRL



Datum / Data: 16.03.2018

Rev.01



**FASE 22  
BAUPHASE 22**  
(S = 1525 mq)

**FASE 21  
BAUPHASE 21**  
(S = 1060 mq)

**FASE 20  
BAUPHASE 20**  
(S = 1345 mq)

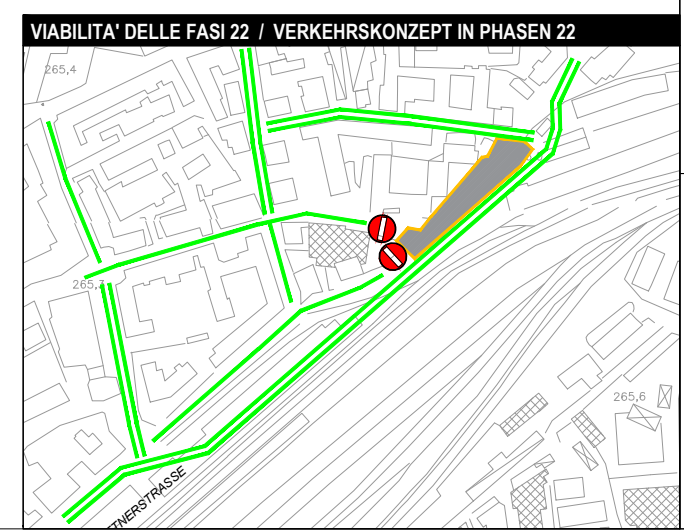
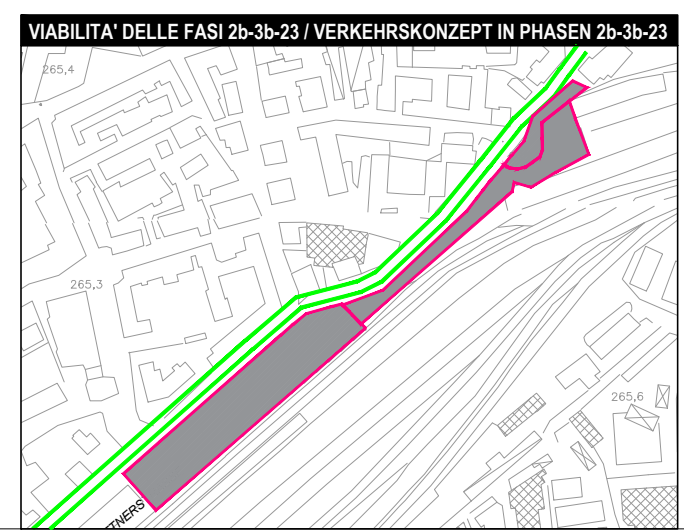
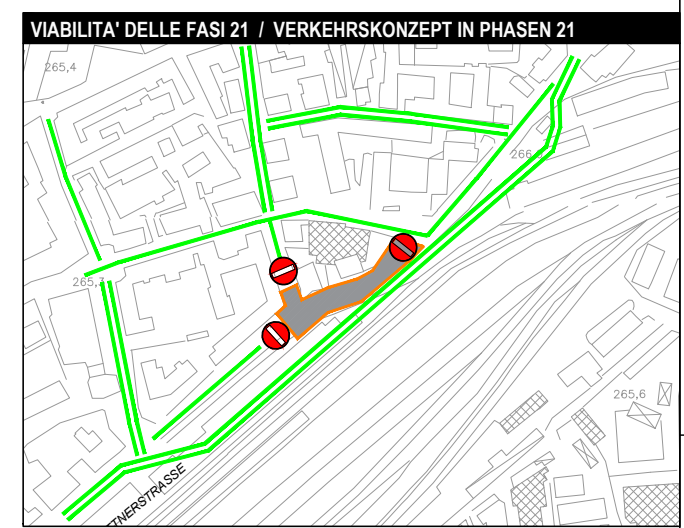
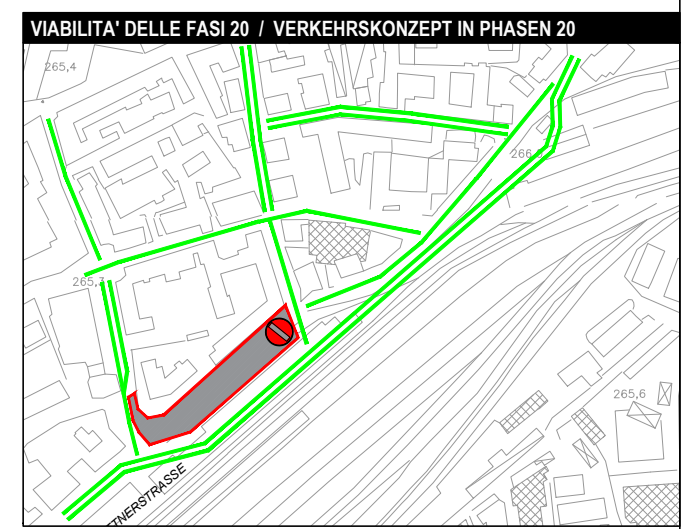
**FASE 23  
BAUPHASE 23**

**FASE 2b  
BAUPHASE 2b**

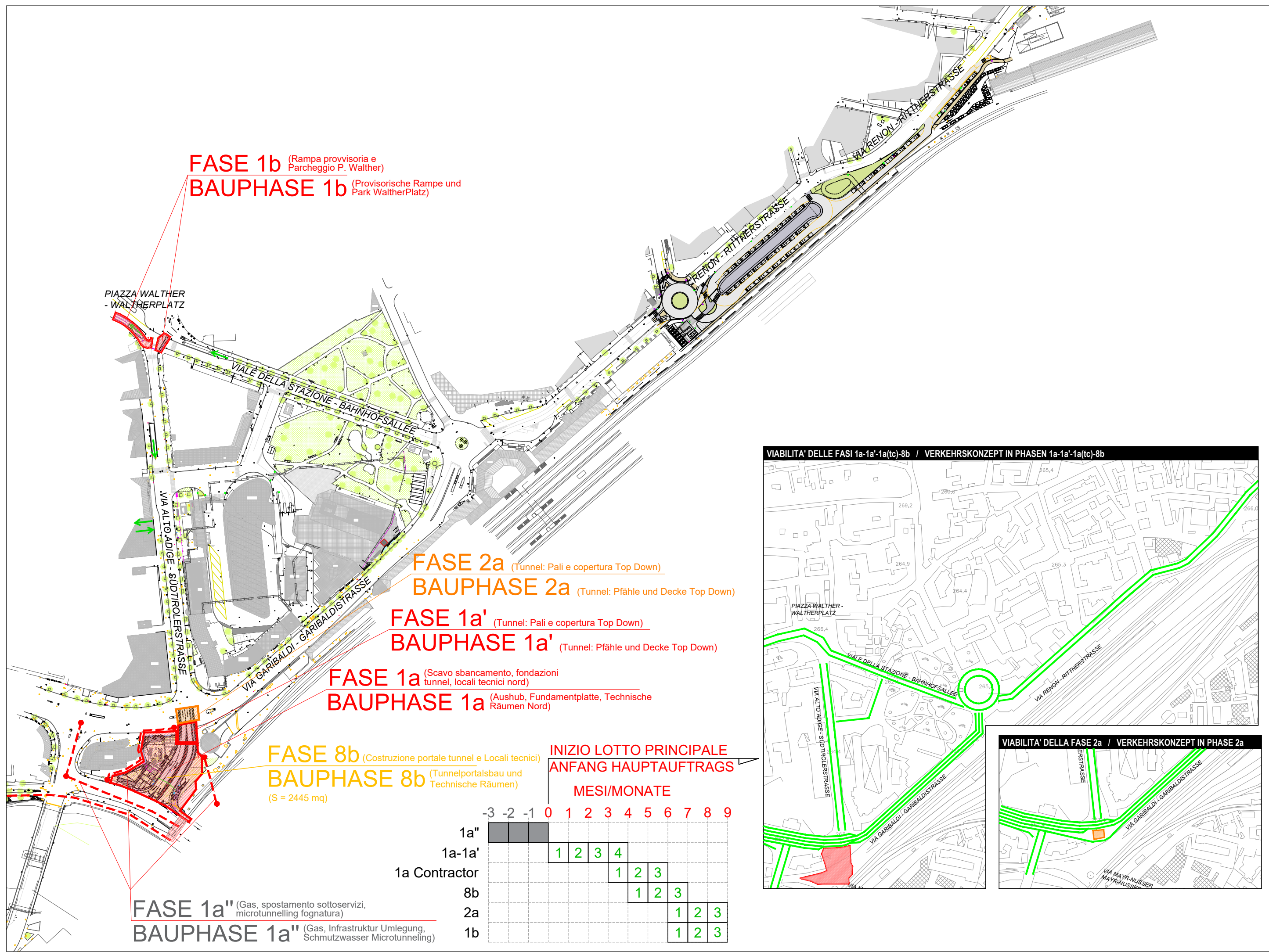
**FASE 3b  
BAUPHASE 3b**

**LAVORI ESCLUSI DAL LOTTO PRINCIPALE AUS HAUPTBAULOS AUSGESCHLOSSENE ARBEITEN**

	-4	-3	-2	-1	0	1	2	3
3b-2b-23	■							
20		■						
21			■					
22				■				







**FASE 1b** (Rampa provvisoria e Parcheggio P. Walther)  
**BAUPHASE 1b** (Provisoria Rampe und Park Waltherplatz)

**FASE 2a** (Tunnel: Pali e copertura Top Down)  
**BAUPHASE 2a** (Tunnel: Pfähle und Decke Top Down)

**FASE 1a'** (Tunnel: Pali e copertura Top Down)  
**BAUPHASE 1a'** (Tunnel: Pfähle und Decke Top Down)

**FASE 1a** (Scavo sbancamento, fondazioni tunnel, locali tecnici nord)  
**BAUPHASE 1a** (Aushub, Fundamentplatte, Technische Räumen Nord)

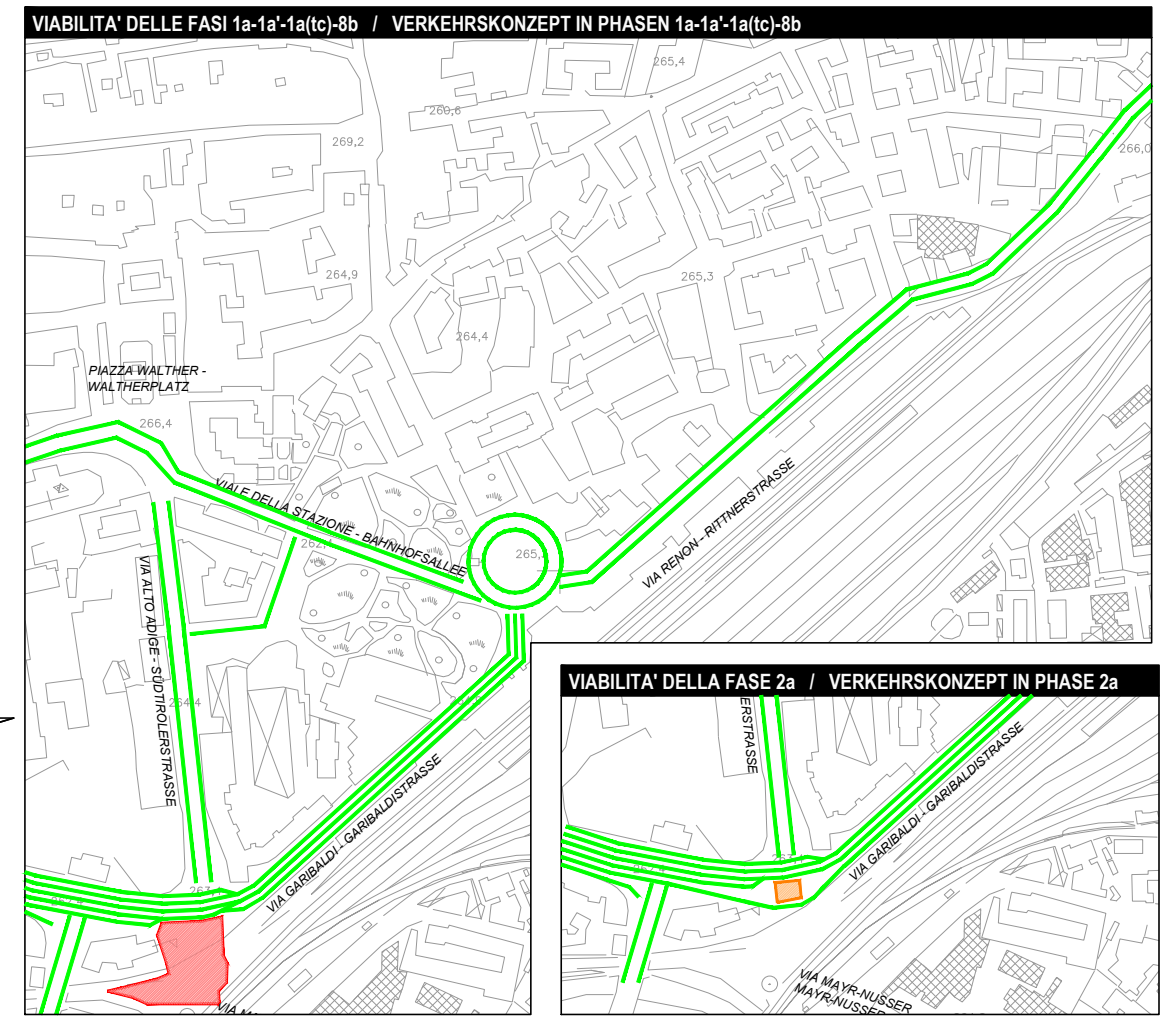
**FASE 8b** (Costruzione portale tunnel e Locali tecnici)  
**BAUPHASE 8b** (Tunnelportalsbau und Technische Räumen)  
 (S = 2445 mq)

**FASE 1a''** (Gas, spostamento sottoservizi, microtunneling fognatura)  
**BAUPHASE 1a''** (Gas, Infrastruktur Umlegung, Schmutzwasser Microtunneling)

**INIZIO LOTTO PRINCIPALE**  
**ANFANG HAUPTAUFTRAGS**

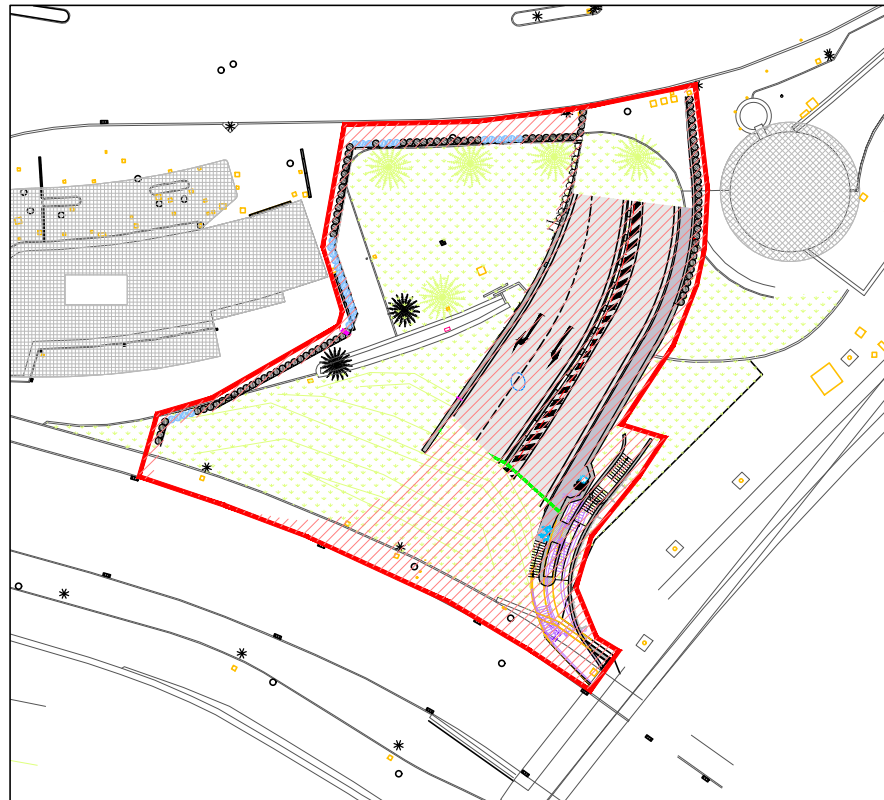
MESI/MONATE

	-3	-2	-1	0	1	2	3	4	5	6	7	8	9
1a''													
1a-1a'				1	2	3	4						
1a Contractor							1	2	3				
8b								1	2	3			
2a										1	2	3	
1b											1	2	3





## FASE 1a BAUPHASE 1a



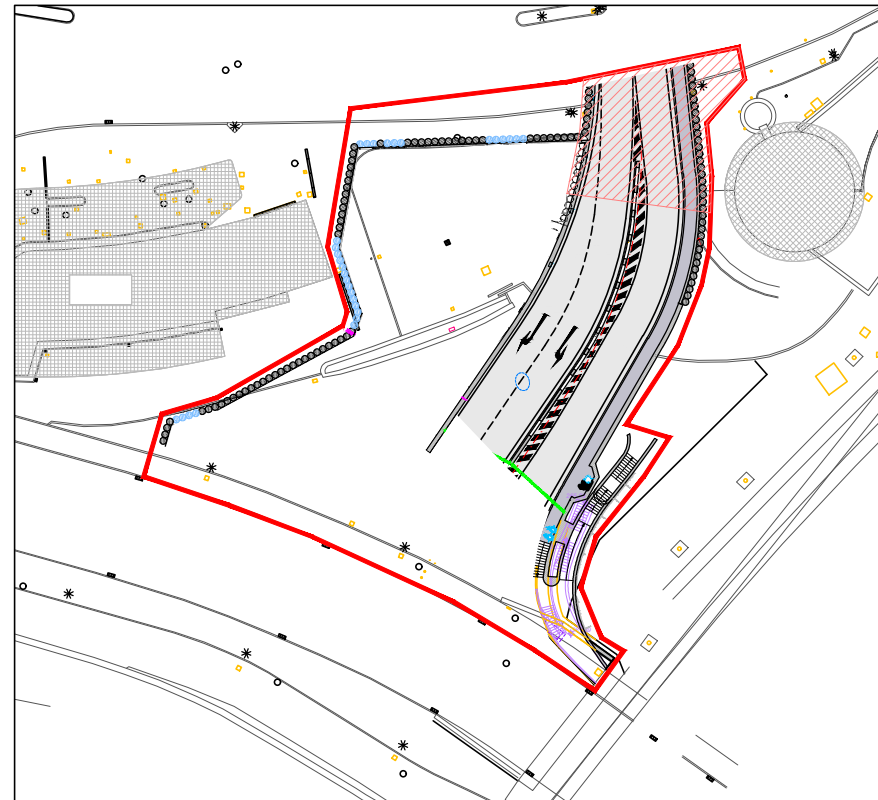
### LAVORAZIONI PREVISTE:

- realizzazione pali;
- scavi di sbancamento;
- fondazioni e muri tunnel

### VORGESEHENE ARBEITEN:

- Pfähle Ausführung;
- Aushub;
- Fundamente und Wände Tunnel

## FASE 1a' BAUPHASE 1a'



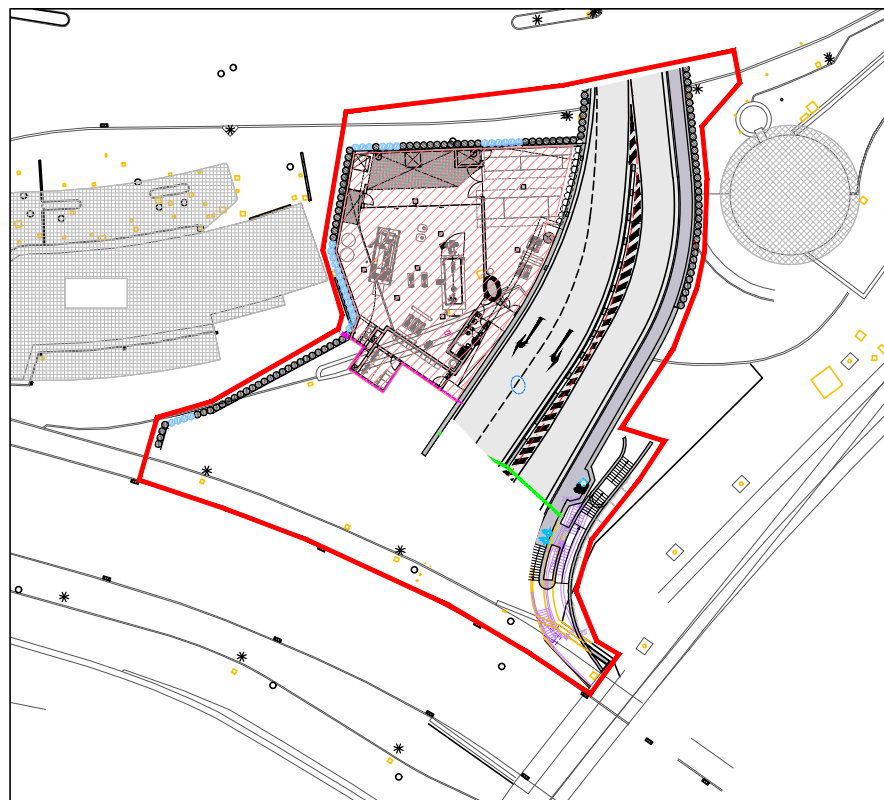
### LAVORAZIONI PREVISTE:

- realizzazione soletta di copertura tratto in top down e relativo scavo

### VORGESEHENE ARBEITEN:

- Ausführung Decke der Tunnelstrecke in Top Down und entsprechender Aushub

## FASE 1a Locali Tecnici Nord BAUPHASE 1a Technische Räumen Nord



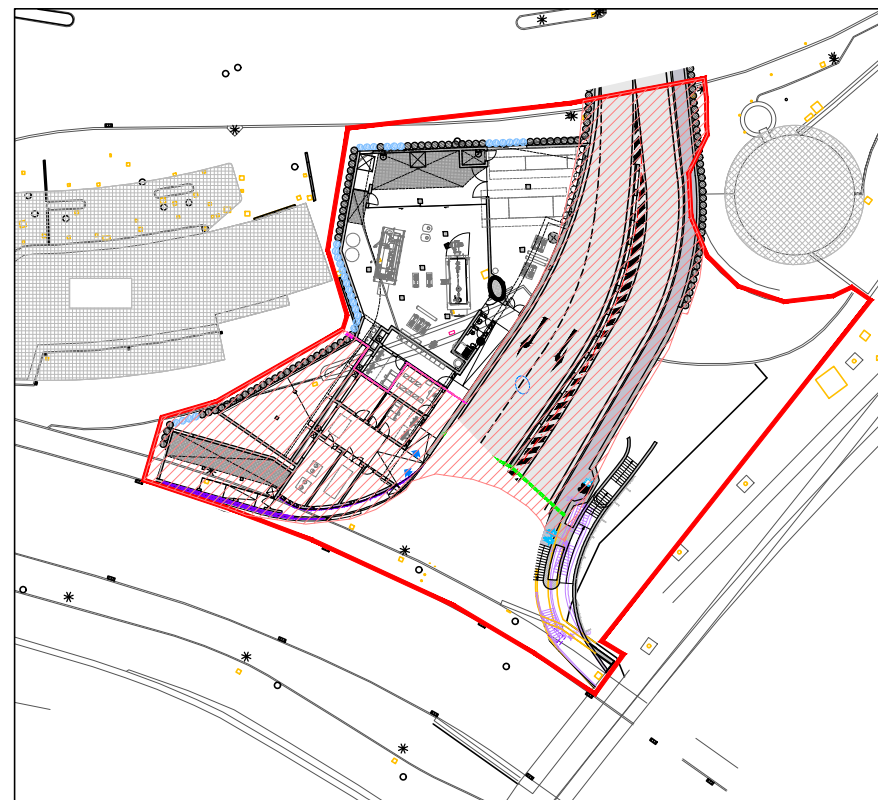
### LAVORAZIONI PREVISTE:

- realizzazione strutture e locali tecnici nord
- posa tubazioni teleriscaldamento

### VORGESEHENE ARBEITEN:

- Ausführung Strukturen und Technische Räumen Nord
- Fernwärmerohre Verlegung

## FASE 8b BAUPHASE 8b



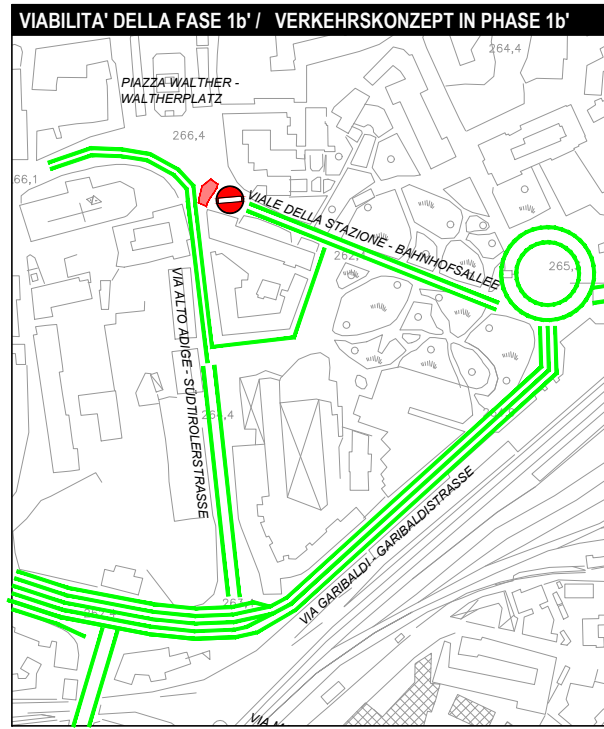
### LAVORAZIONI PREVISTE:

- realizzazione solai copertura portale di imbocco del tunnel e spalla ponte
- locali tecnici e vasca

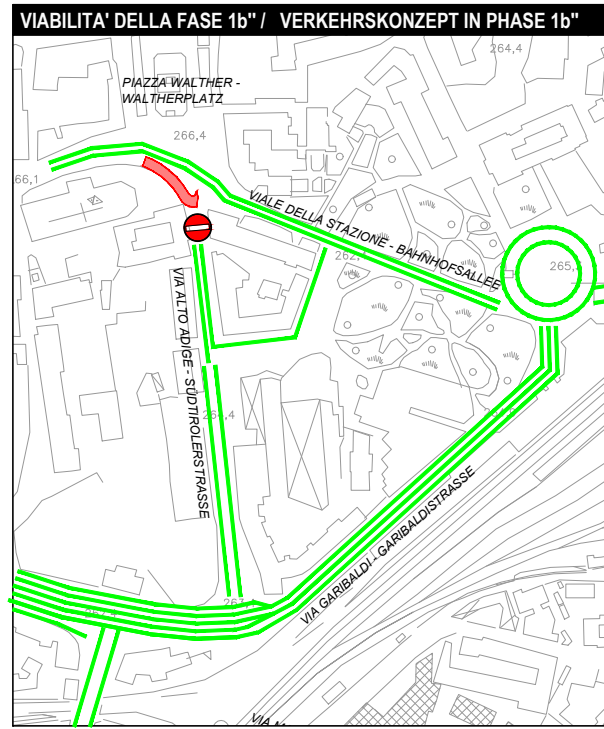
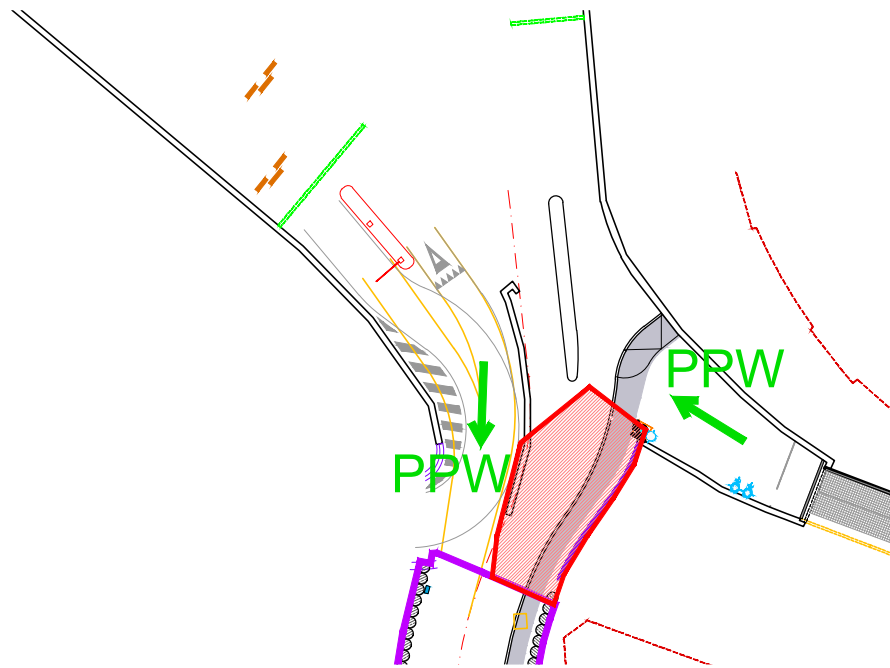
### VORGESEHENE ARBEITEN:

- Ausführung Decke des Tunnelportales
- Technische Lokale und Becke

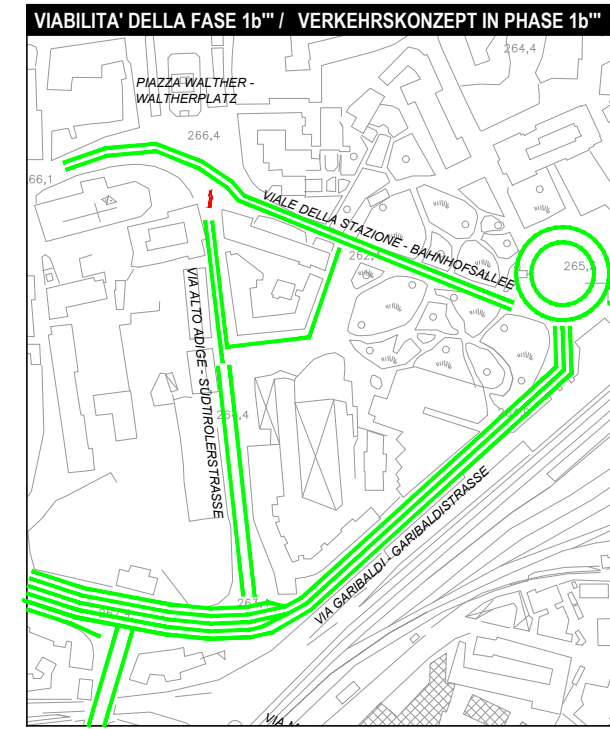
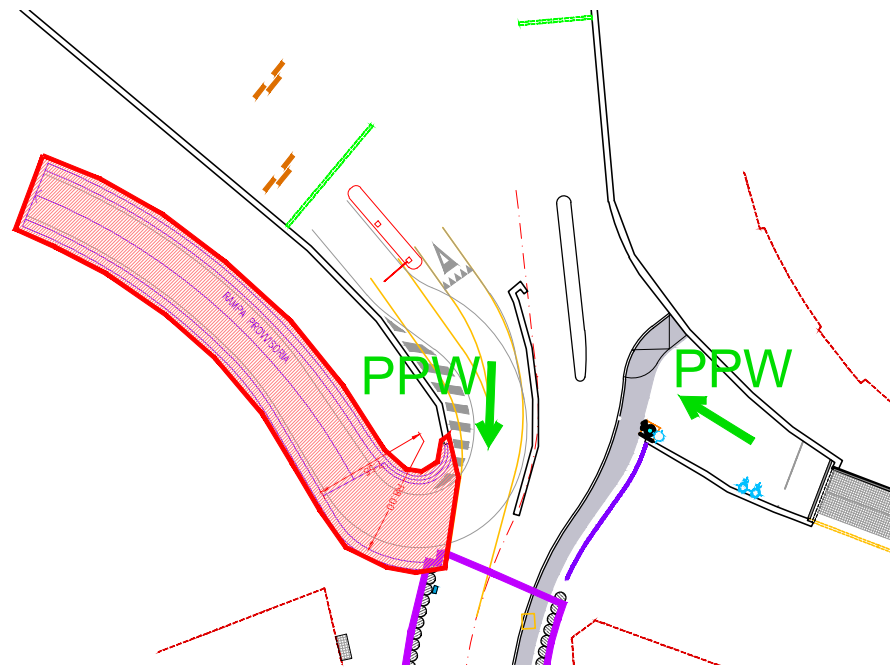




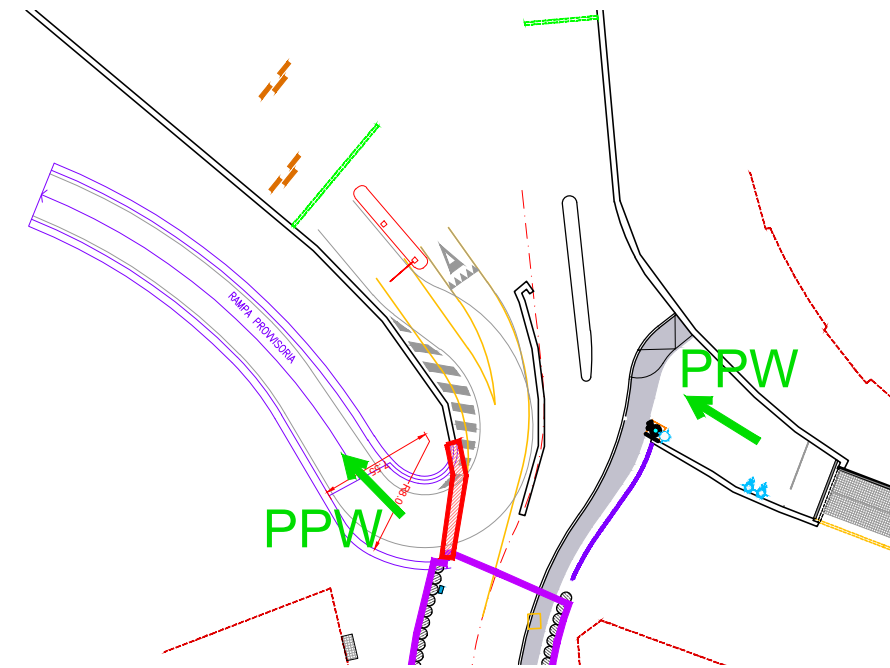
**FASE 1b'** (Tunnel)  
**BAUPHASE 1b'** (Tunnel)

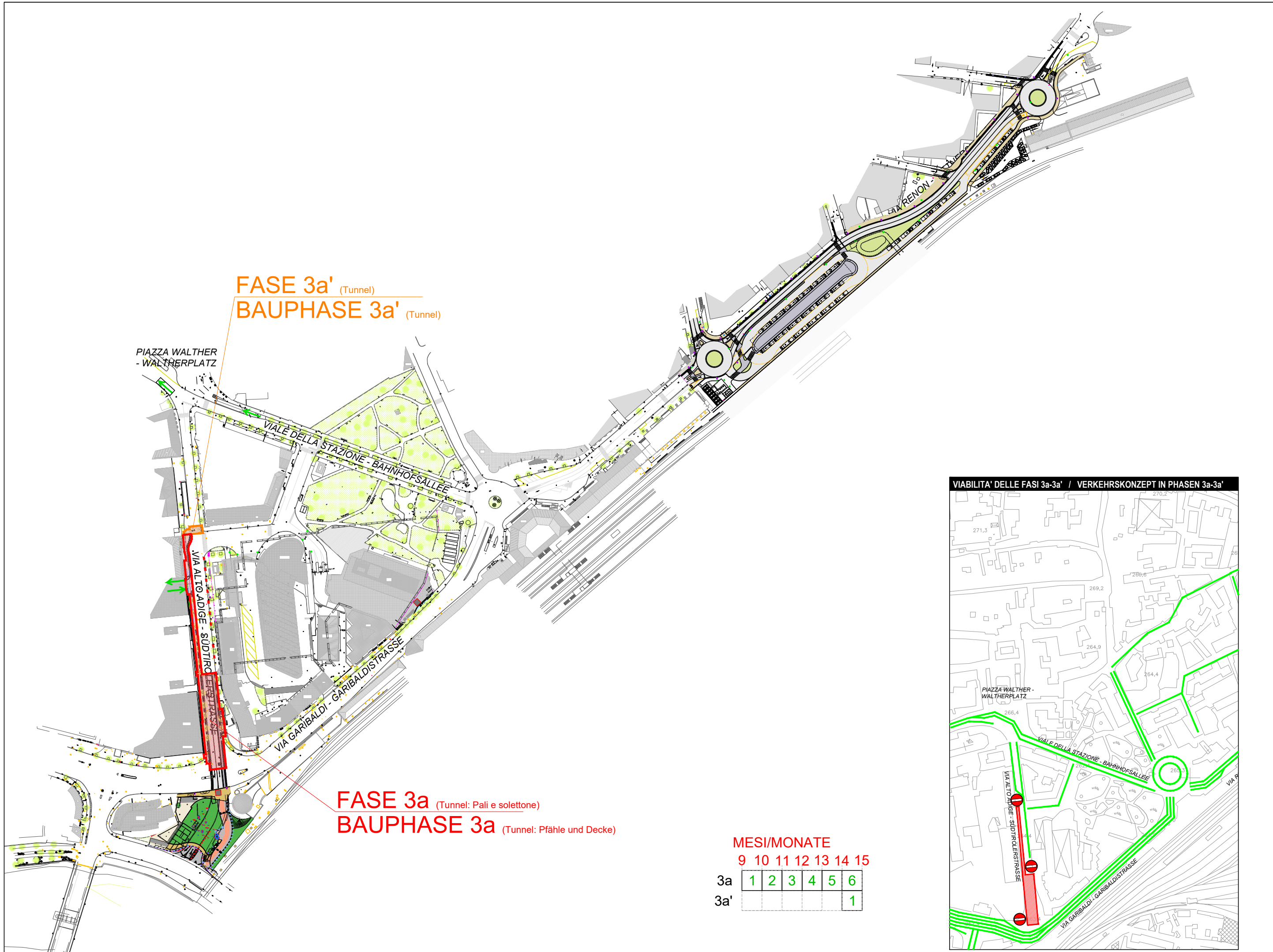


**FASE 1b''** (Tunnel)  
**BAUPHASE 1b''** (Tunnel)



**FASE 1b'''** (Tunnel)  
**BAUPHASE 1b'''** (Tunnel)



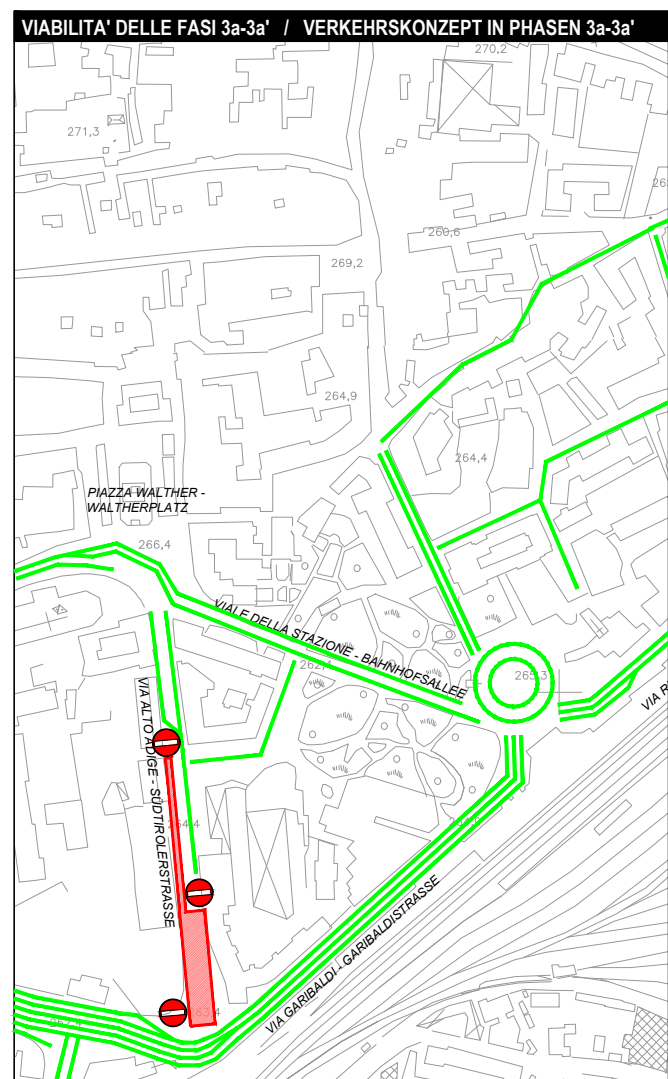


**FASE 3a'** (Tunnel)  
**BAUPHASE 3a'** (Tunnel)

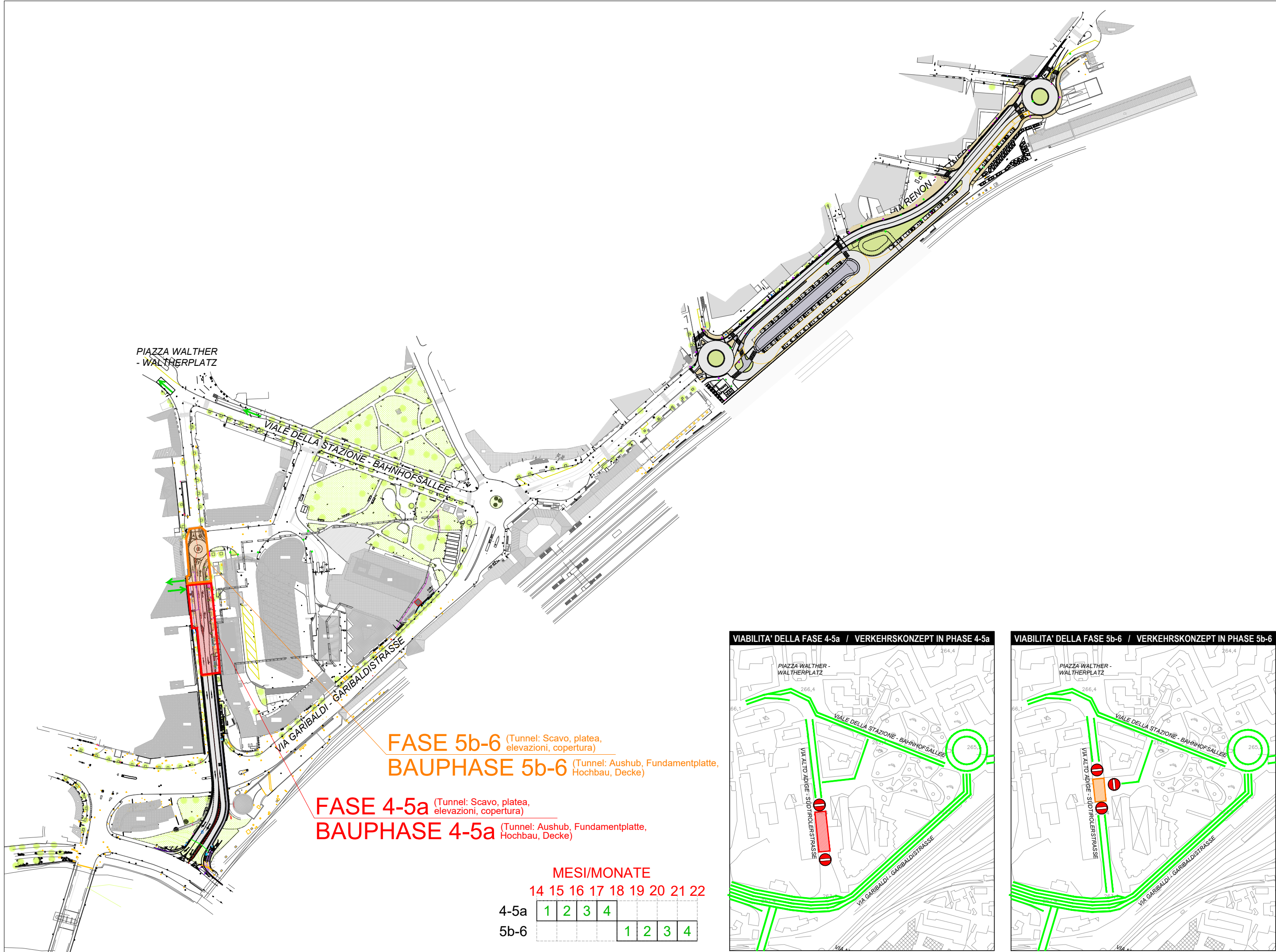
**FASE 3a** (Tunnel: Pali e solettone)  
**BAUPHASE 3a** (Tunnel: Pfähle und Decke)

MESI/MONATE  
 9 10 11 12 13 14 15

3a	1	2	3	4	5	6
3a'						1







**FASE 5b-6** (Tunnel: Scavo, platea, elevazioni, copertura)  
**BAUPHASE 5b-6** (Tunnel: Aushub, Fundamentplatte, Hochbau, Decke)

**FASE 4-5a** (Tunnel: Scavo, platea, elevazioni, copertura)  
**BAUPHASE 4-5a** (Tunnel: Aushub, Fundamentplatte, Hochbau, Decke)

**MESI/MONATE**

	14	15	16	17	18	19	20	21	22
4-5a	1	2	3	4					
5b-6					1	2	3	4	

