



ICM Italia General Contractor Srl

WALTHERPARK - KAUFHAUS BOZEN

UVS – SIA

**Anlage - Allegato A004-2:
Arbeitsfasen Infrastrukturprojekt
Fasi di lavoro progetto infrastrutture**

Antragsteller:
Richiedente: **KHB
GmbH**

Projektanten:
Progettisti:



ICM Italia General Contractor SRL



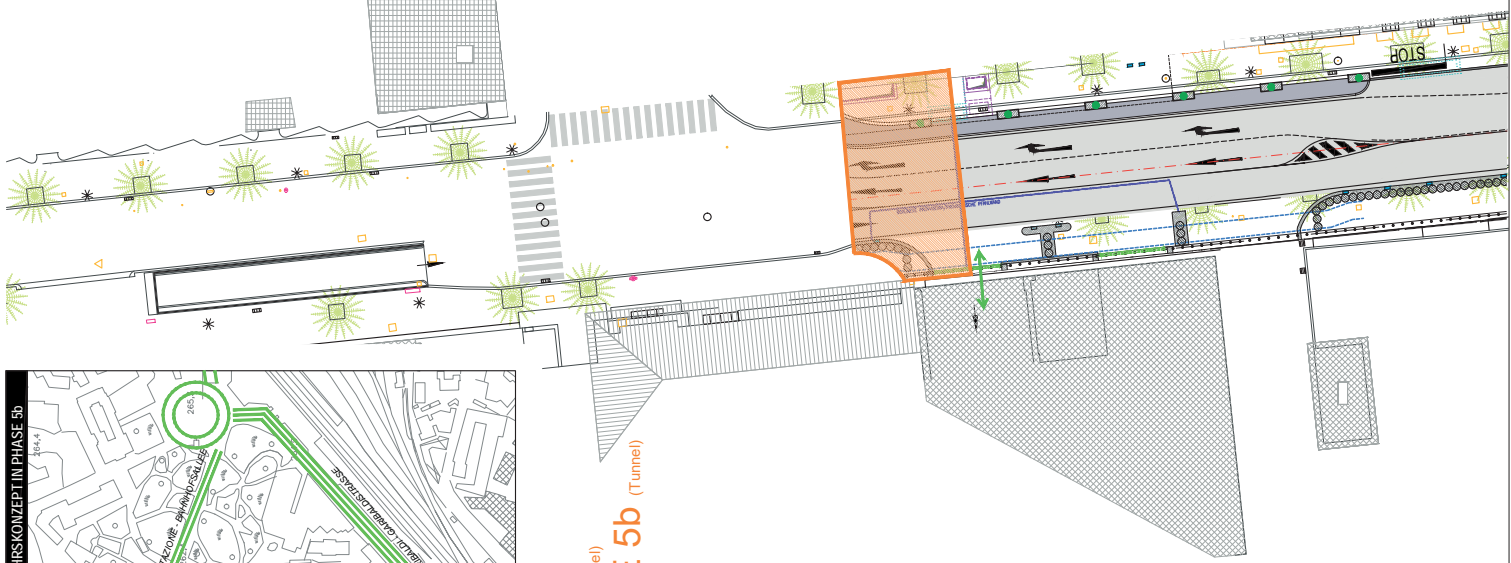
DMA

DMA Italia SRL

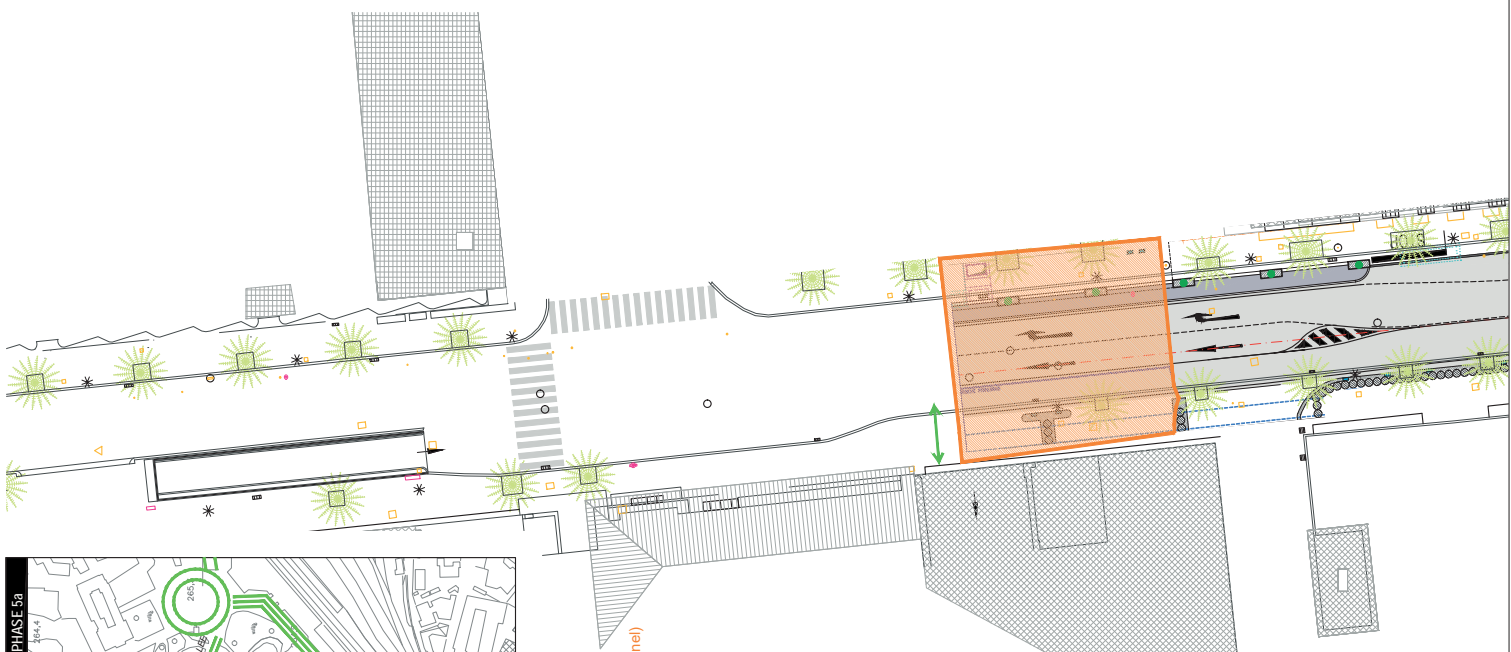
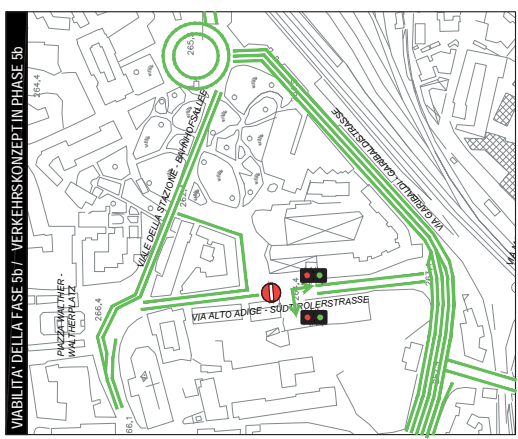


Datum / Data: 16.03.2018

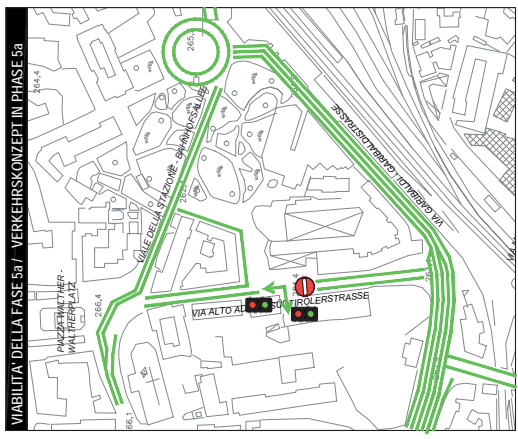
Rev.01

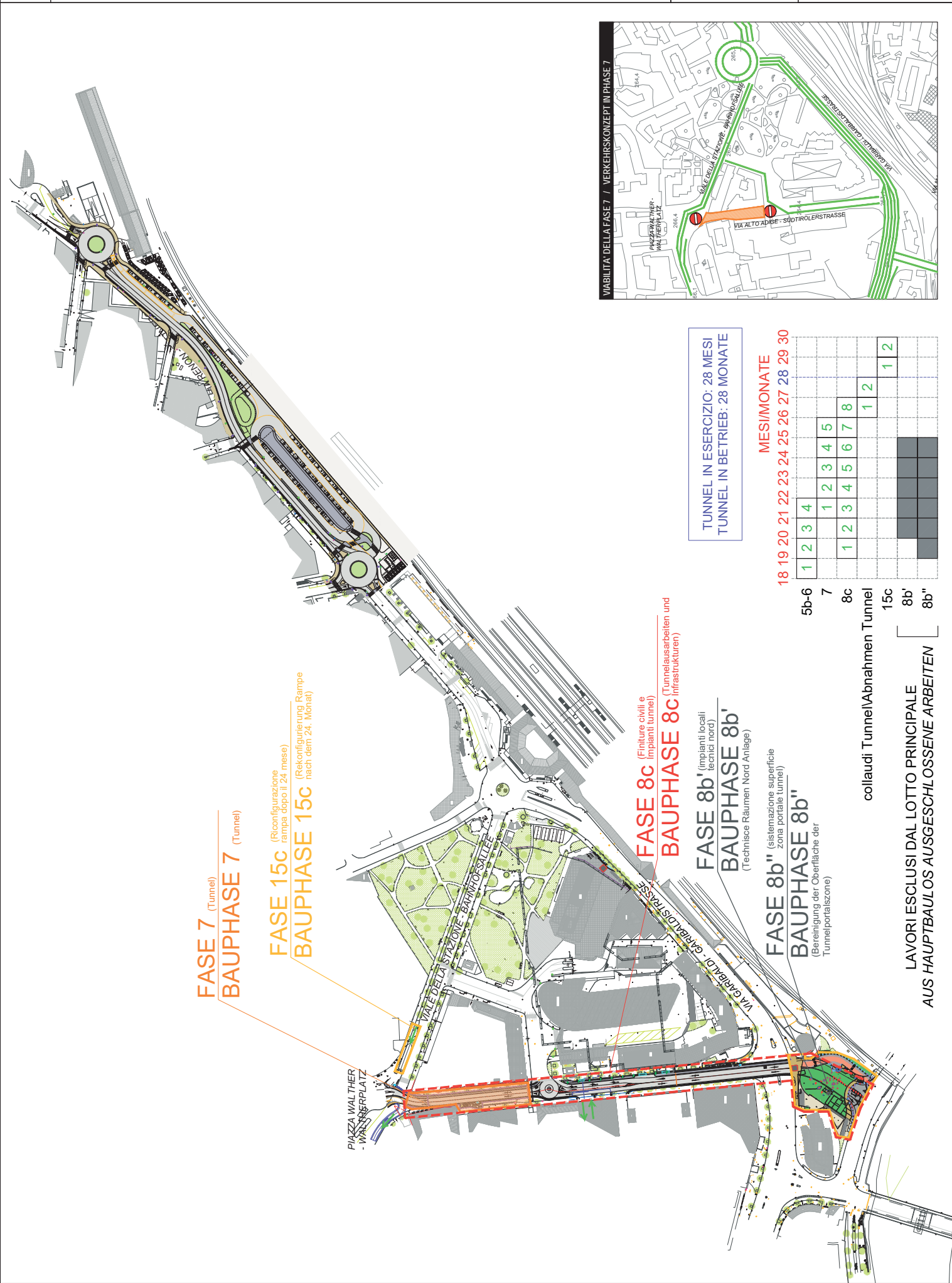


FASE 5b (Tunnel)
BAUPHASE 5b (Tunnel)



FASE 5a (Tunnel)
BAUPHASE 5a (Tunnel)





FASE 7 (Tunnel)
BAUPHASE 7 (Tunnel)

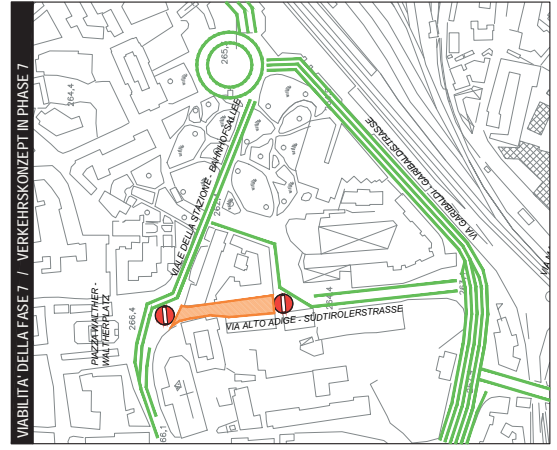
FASE 15c (Riconfigurazione
rampa dopo il 24 mese)
BAUPHASE 15c (Rekonfigurierung Rampe
nach dem 24. Monat)

FASE 8c (Finiture civili e
impianti tunnel)
BAUPHASE 8c (Tunnelausarbeiten und
Infrastrukturen)

FASE 8b' (impianti locali
tecniche nord)
BAUPHASE 8b'
(Technische Räumen Nord Anlage)

FASE 8b'' (sistemazione superficie
zona portale tunnel)
BAUPHASE 8b''
(Bereinigung der Oberfläche der
Tunnelportalszone)

collaudi Tunnel/Abnahmen Tunnel
LAVORI ESCLUSI DAL LOTTO PRINCIPALE
AUS HAUPTBAULOS AUSGESCHLOSSENE ARBEITEN



VIABILITÀ DELLA FASE 7 / VERKEHRSKONZEPT IN PHASE 7

TUNNEL IN ESERCIZIO: 28 MESI
TUNNEL IN BETRIEB: 28 MONATE

MESI/MONATE

18	19	20	21	22	23	24	25	26	27	28	29	30
1	2	3	4									
				1	2	3	4	5				
				1	2	3	4	5	6	7	8	
										1	2	
											1	2

FASE 12a
BAUPHASE 12a
(S = 1990 mq)

FASE 12b
BAUPHASE 12b
(S = 1800 mq)

FASE 11
BAUPHASE 11
(S = 2695 mq)

FASE 9b
BAUPHASE 9b
(S = 1170 mq)

FASE 9a
BAUPHASE 9a
(S = 465 mq)

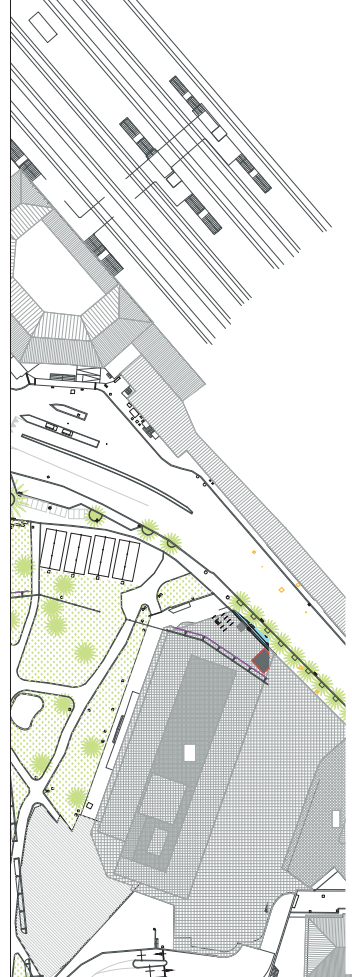
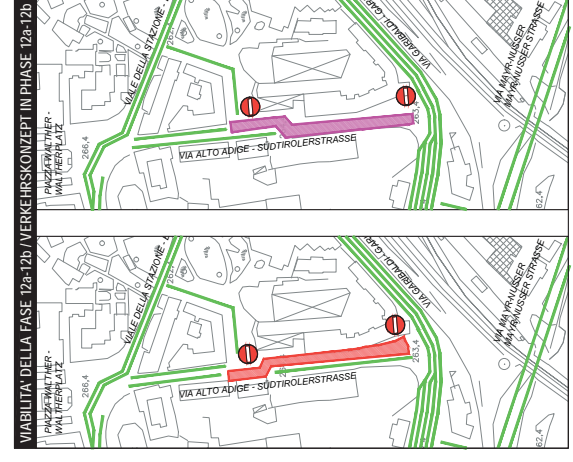
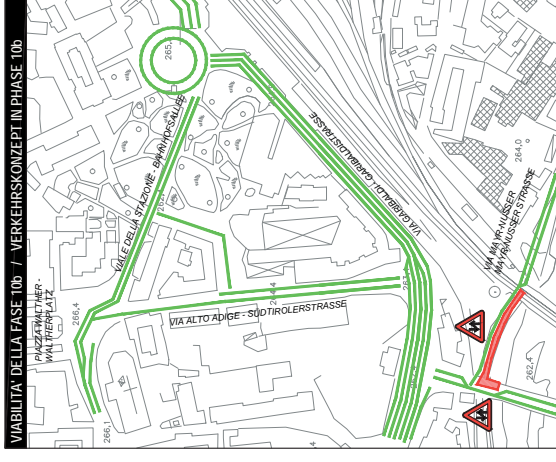
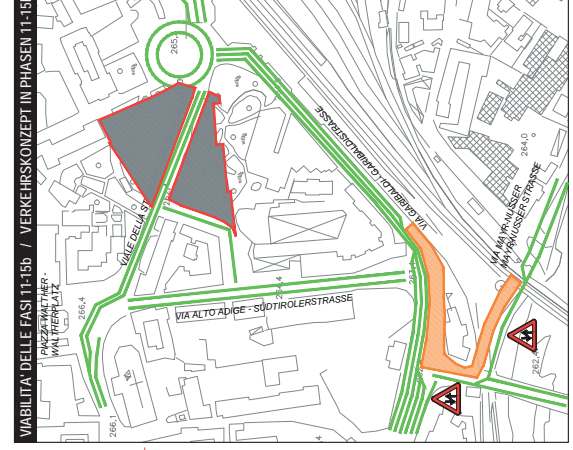
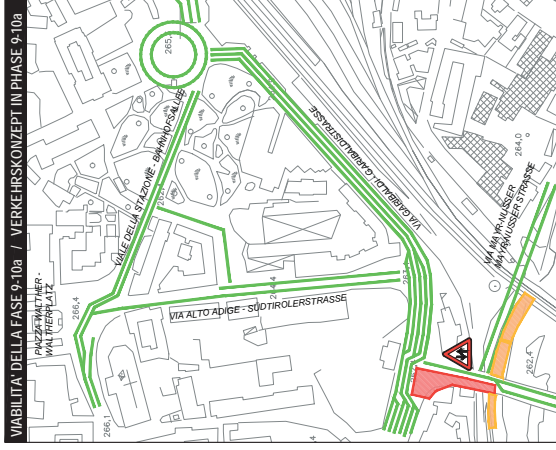
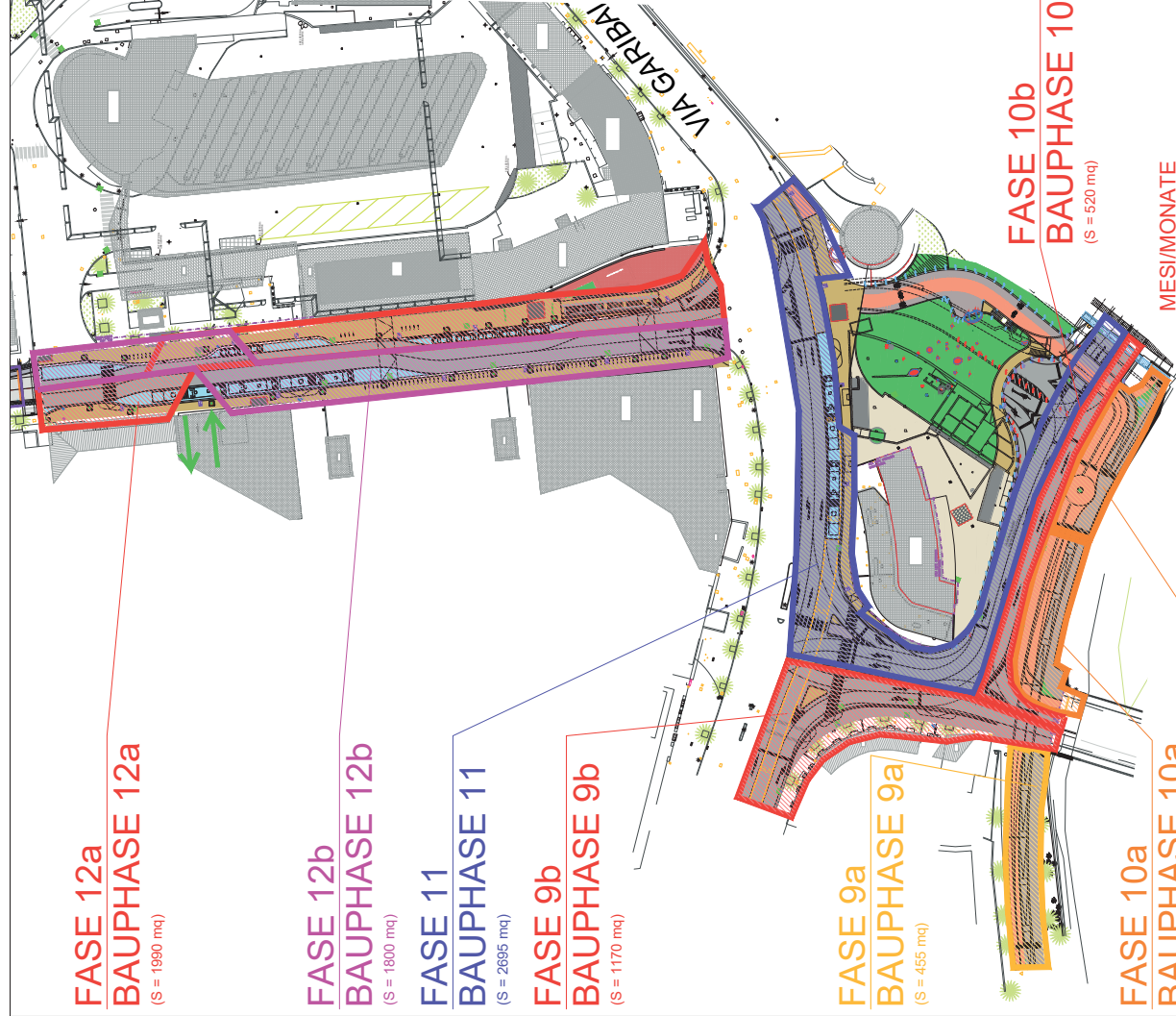
FASE 10a
BAUPHASE 10a
(S = 510 mq)

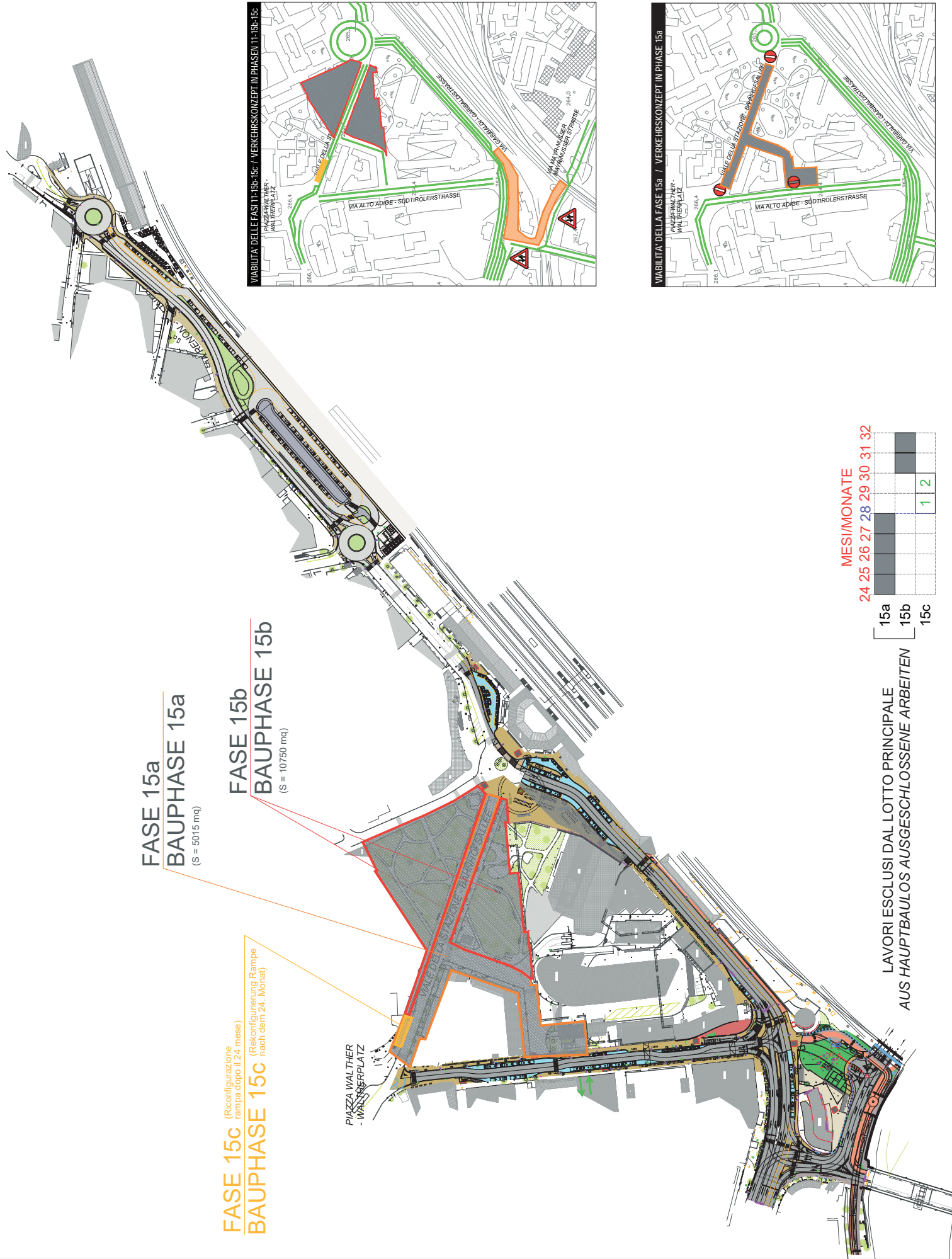
FASE 10a'
BAUPHASE 10a'
(S = 455 mq)

FASE 10b
BAUPHASE 10b
(S = 520 mq)

	MESI/MONATE																
	14	15	16	17	18	19	20	21	22	23	24	25	26	27	28	29	30
10a	1	2															
10a'			1	2	3												
9a						1	2										
9b						1	2	3									
10b							1	2	3	4							
11												1	2	3			
12a															1	2	
12b																1	2

TUNNEL IN ESERCIZIO: 28 MESI
TUNNEL IN BETRIEB: 28 MONATE
con la fase 11 via Mayr-Nusser
mit Bauphase 11 Mayr-Nusser Strasse





FASE 15a
BAUPHASE 15a
(S = 5015 mcq)

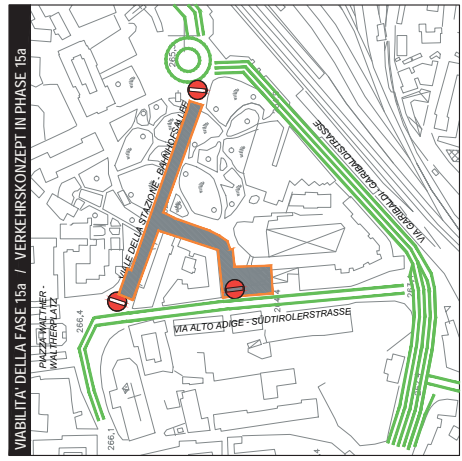
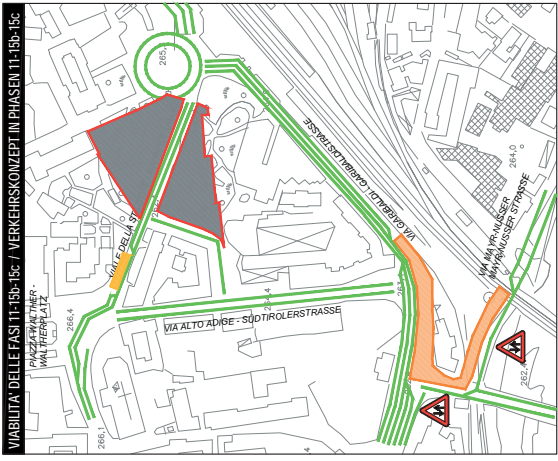
FASE 15b
BAUPHASE 15b
(S = 10750 mcq)

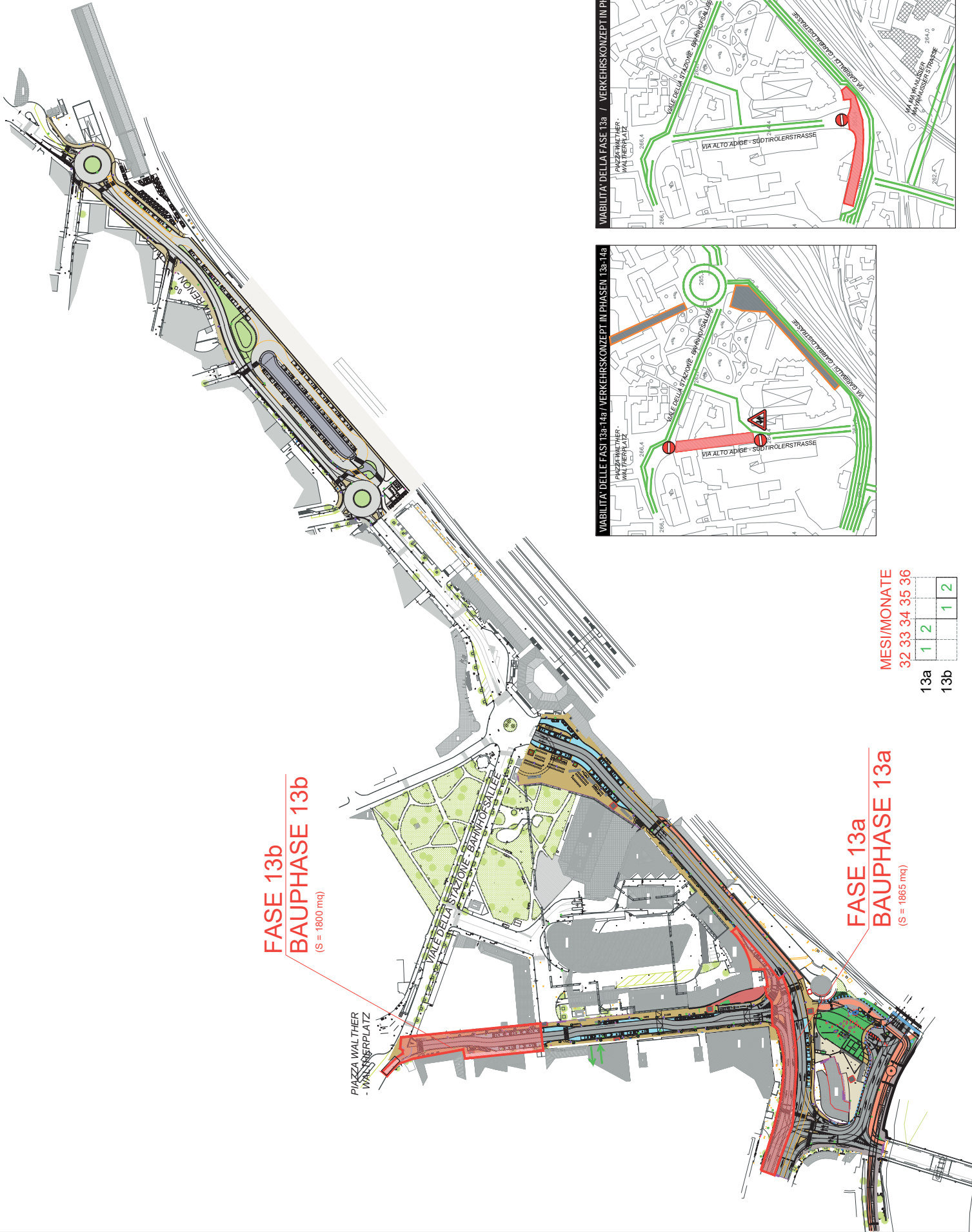
FASE 15c (Riconfigurazione
rampa dopo il 24 mese)
BAUPHASE 15c (Reconfigurazione Rampe
natch dem 24. Monat)

MESI/MONATE

24	25	26	27	28	29	30	31	32
							1	2

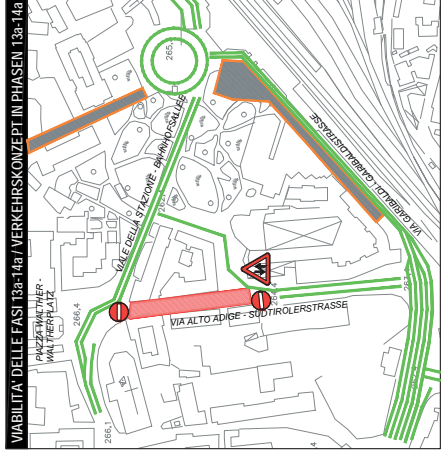
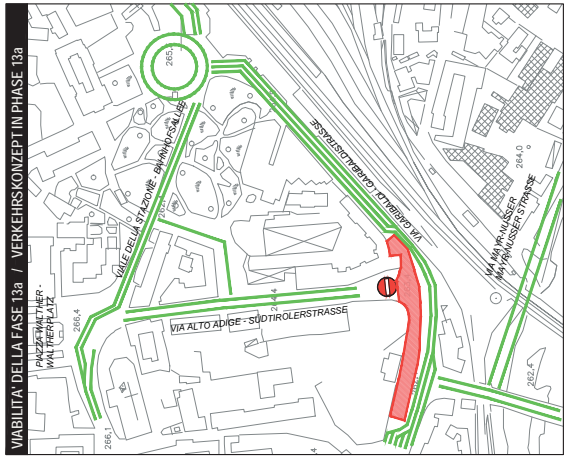
LAVORI ESCLUSI DAL LOTTO PRINCIPALE
AUS HAUPTBAULOS AUSGESCHLOSSENE ARBEITEN





FASE 13b
BAUPHASE 13b
(S = 1800 mq)

FASE 13a
BAUPHASE 13a
(S = 1865 mq)



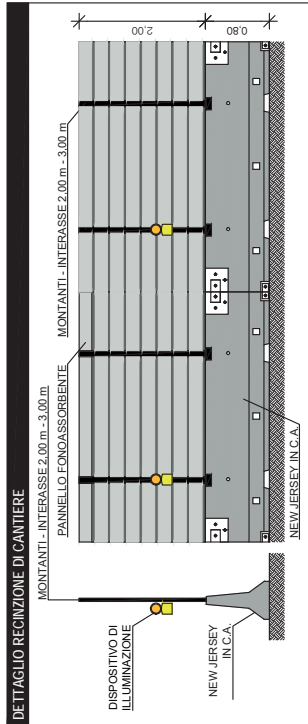
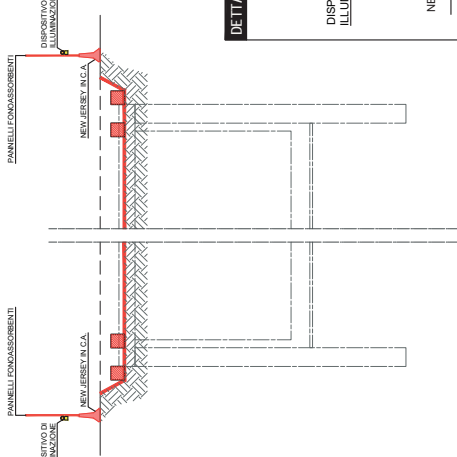
MESI/MONATE

32	33	34	35	36
1	2			
1	2	1	2	

13a
13b

4. FASE / 4. PHASE

- Scappozzatura diaframmi e realizzazione getto per piano di appoggio soletto di copertura;
- Soletto di copertura (lasciando fori per betonaggio);
- Impermeabilizzazione superiore;
- Abrucchi del obersten Streifens der Schlitzwände und Realisierung planarer Fläche als Deckenaufleger mittels Betonlöss;
- Tunneldecke (Gussöffnungen vorsehen);
- Oberabdichtung.

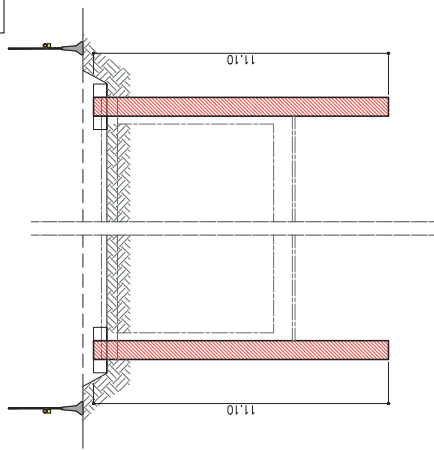


1. FASE / 1. PHASE

- Eliminazione arredo urbano esistente;
- Spostamento sottoservizi;
- Taglio asfalto ed eliminazione massicciata;
- Spiatamento superficiale;
- Realizzazione cordoli guida dei diaframmi.
- Abtrag der Oberflächen längs der Straße;
- Umlegung der Infrastrukturen;
- Asfaltschnitt und Abtrag des Straßenunterbaus;
- Aushub;
- Ausführung der Betonhilsträger für die Schlitzwände.

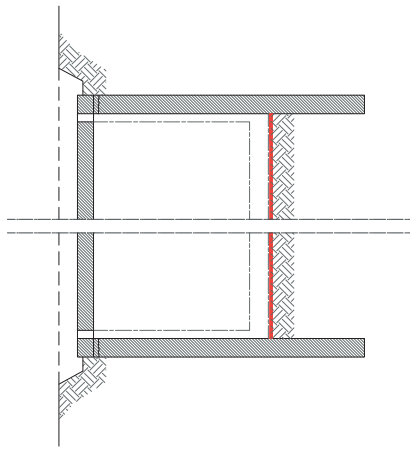
2. FASE / 2. PHASE

- Realizzazione pali trivellati con tubo camicia;
- Ausführung Bohrpfähle mit Ummanntungsrohr



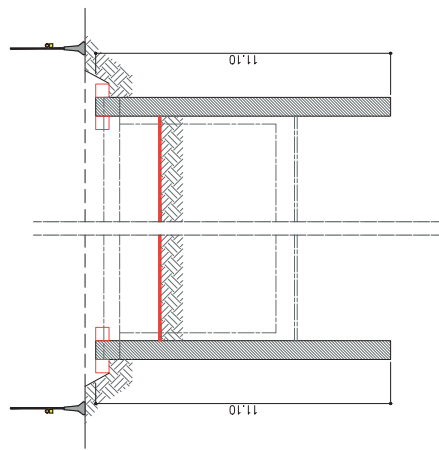
5. FASE / 5. PHASE

- Completamento scavi al di sotto del soletto;
- Abschluss des Aushubes unter der Tunneldecke.



3. FASE / 3. PHASE

- Approfondimento dello scavo per realizzazione piano di lavoro per montaggio fino a -1,50 m sotto intradosso soletto finito
- Getto del soletto di copertura;
- Vergrößerung der Aushubtiefe zur Realisierung der Arbeitsfläche bis -1,50 m unter Unterkante Tunneldecke
- Montage und Guss der Tunneldecke.



6. FASE / 6. PHASE

- Impermeabilizzazione muri laterali;
- Armatura e getto fondazioni e muri laterali.
- Abdichtung Wände;
- Bewehrung und Guss von Fundamenten und seitlichen Wänden.

