

AUTONOME PROVINZ BOZEN - SÜDTIROL

Abteilung 29 – Landesagentur für Umwelt
Amt 29.8 – Labor für physikalische Chemie



PROVINCIA AUTONOMA DI BOLZANO - ALTO ADIGE

Ripartizione 29 – Agenzia provinciale per l'Ambiente
Ufficio 29.8 – Laboratorio di chimica fisica

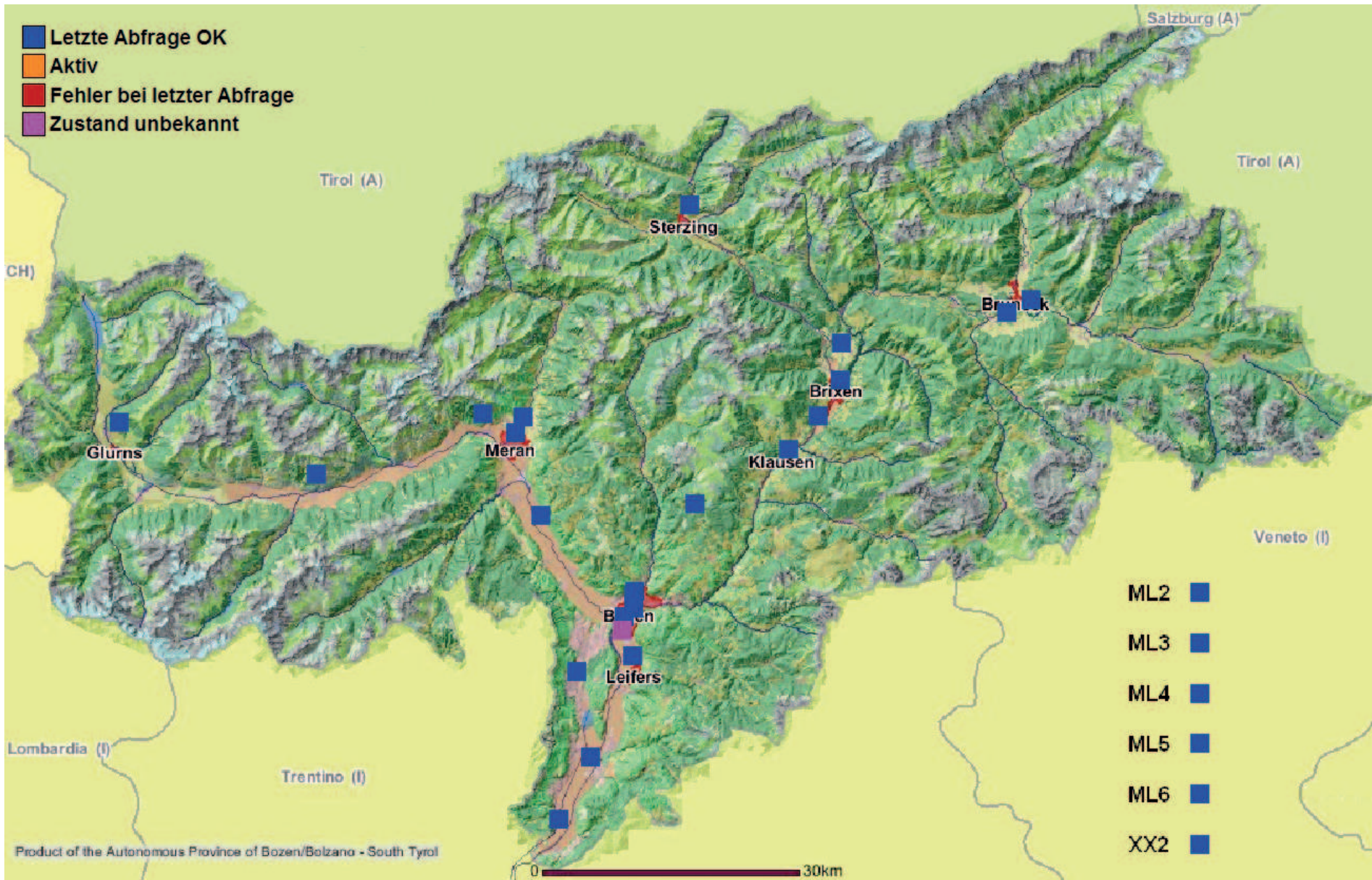
Luftqualität in Südtirol 2015

Qualità dell'aria in Alto Adige 2015

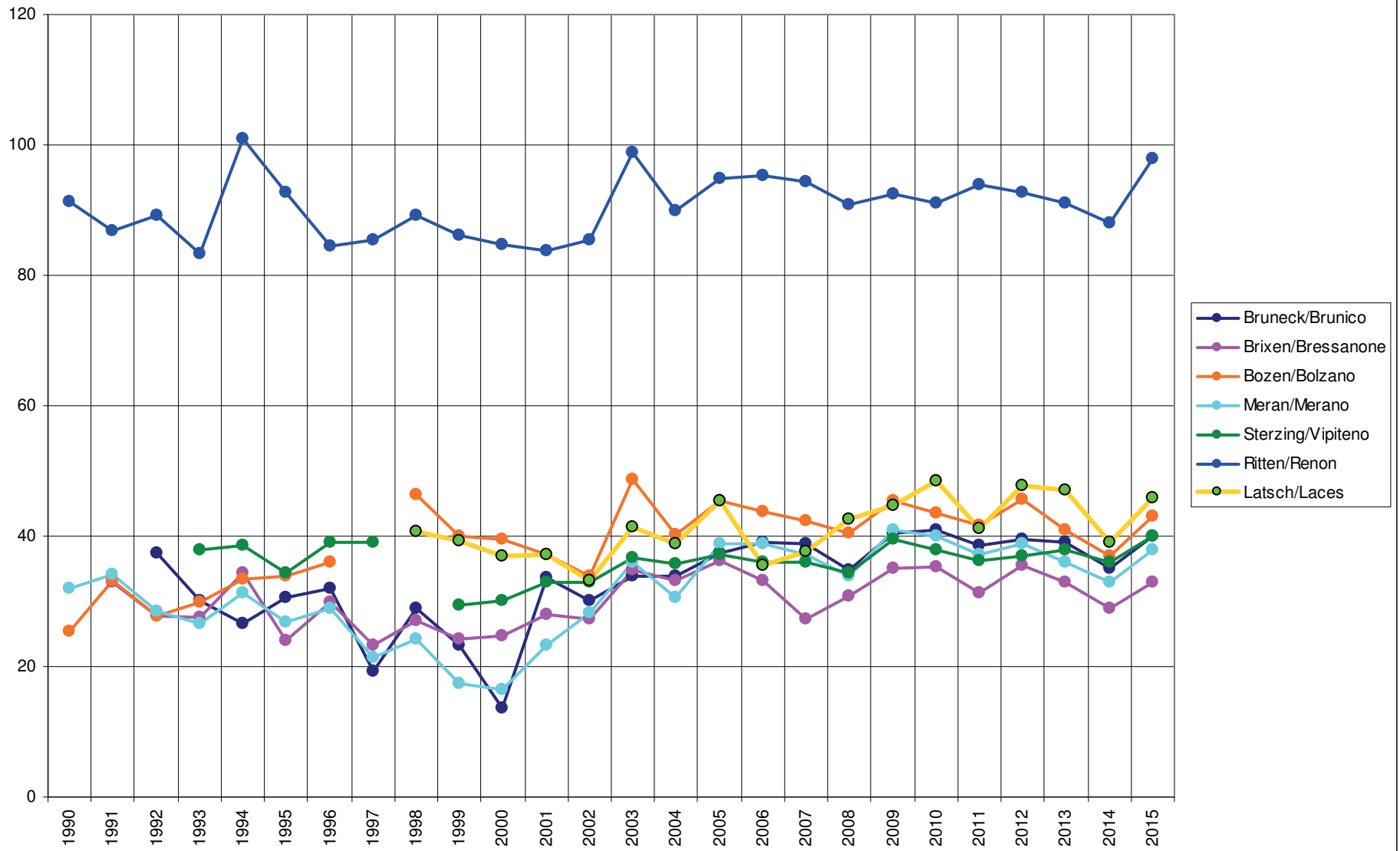
Luca Verdi

Labor für physikalische Chemie - Laboratorio di Chimica Fisica

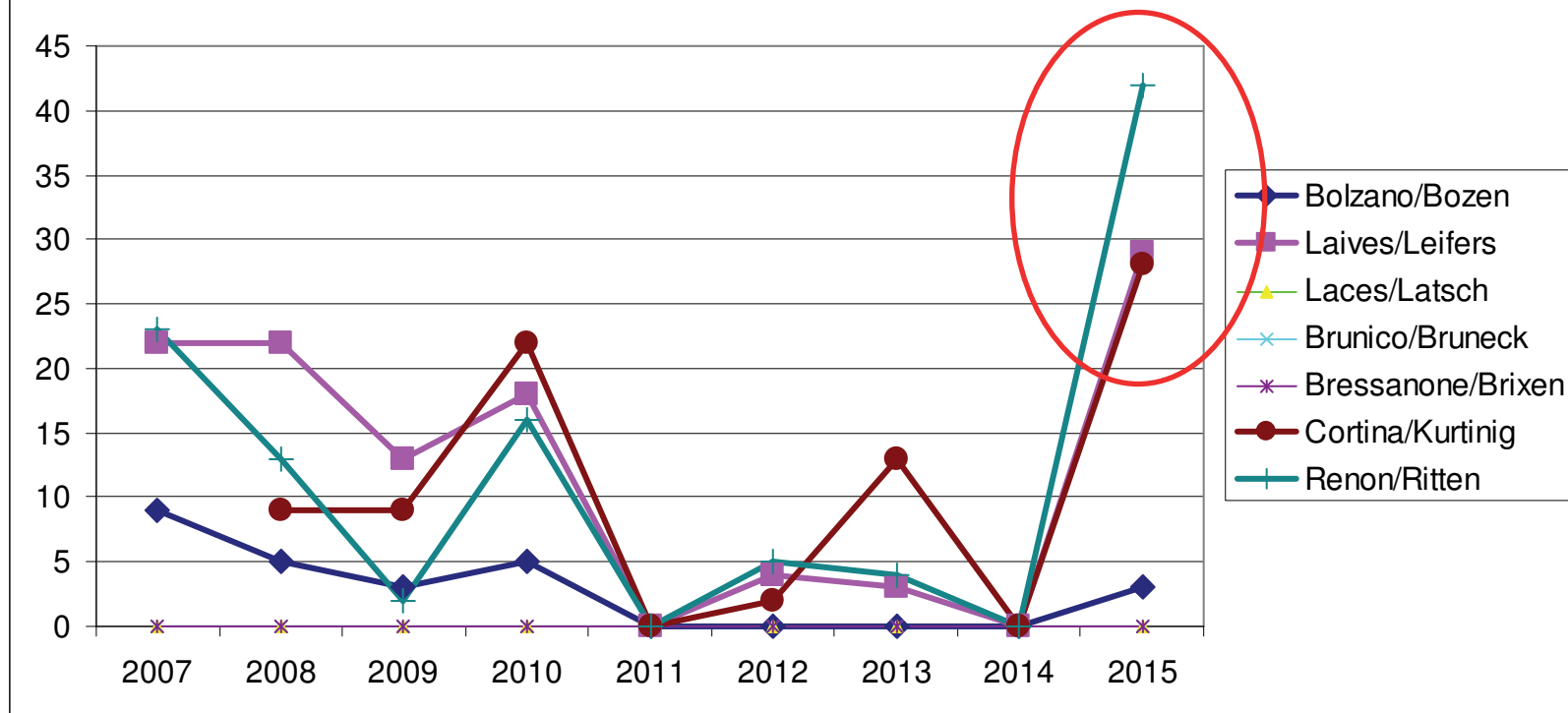
Umweltagentur - Agenzia per l'ambiente



O3 - Jahresmittelwerte/medie annuali [$\mu\text{g}/\text{m}^3$]



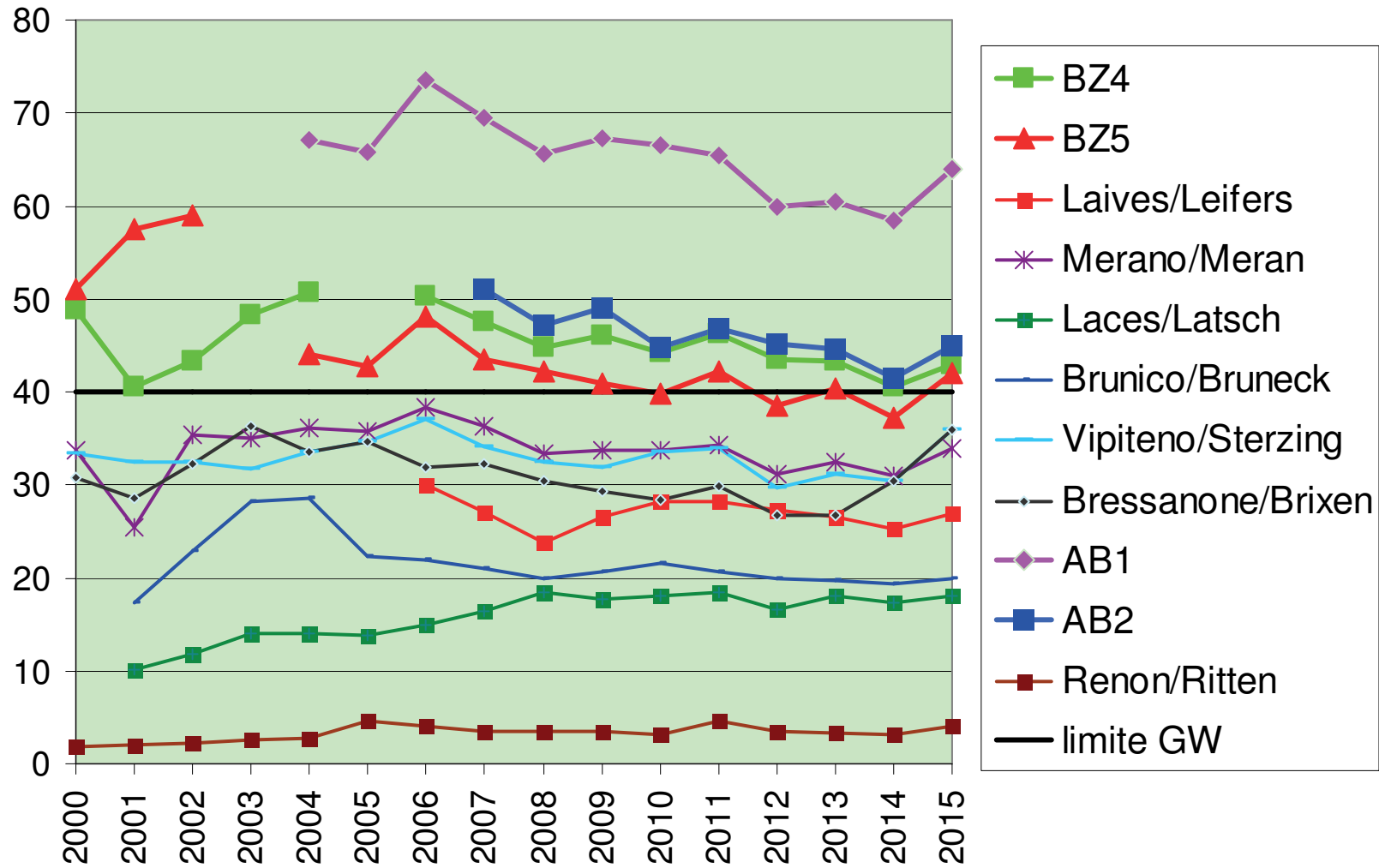
Überschreitungen der Infoschwelle- superamenti Ozono Info (180 µg/m3)



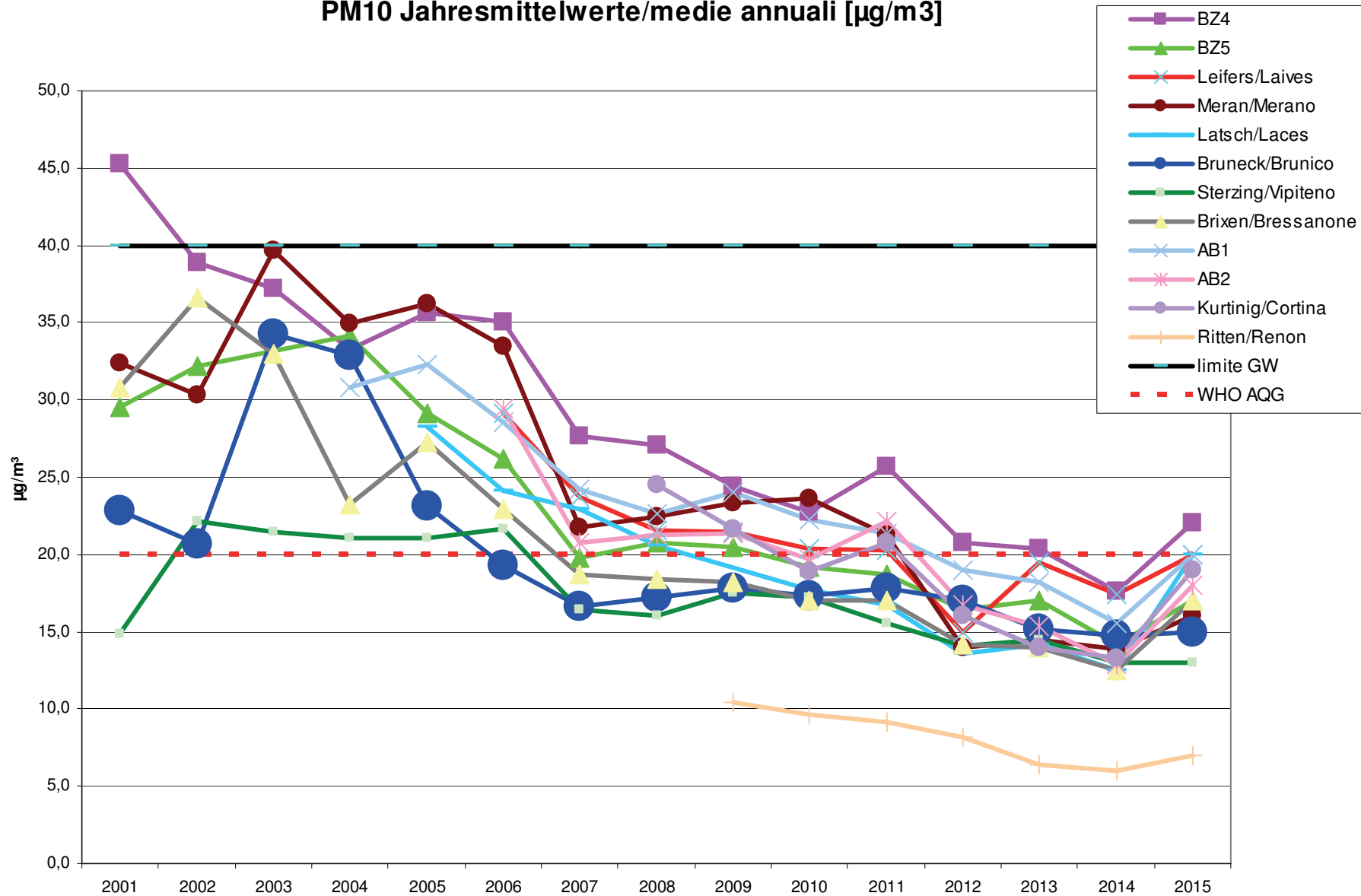
giugno-luglio-agosto / Juni-Juli-August



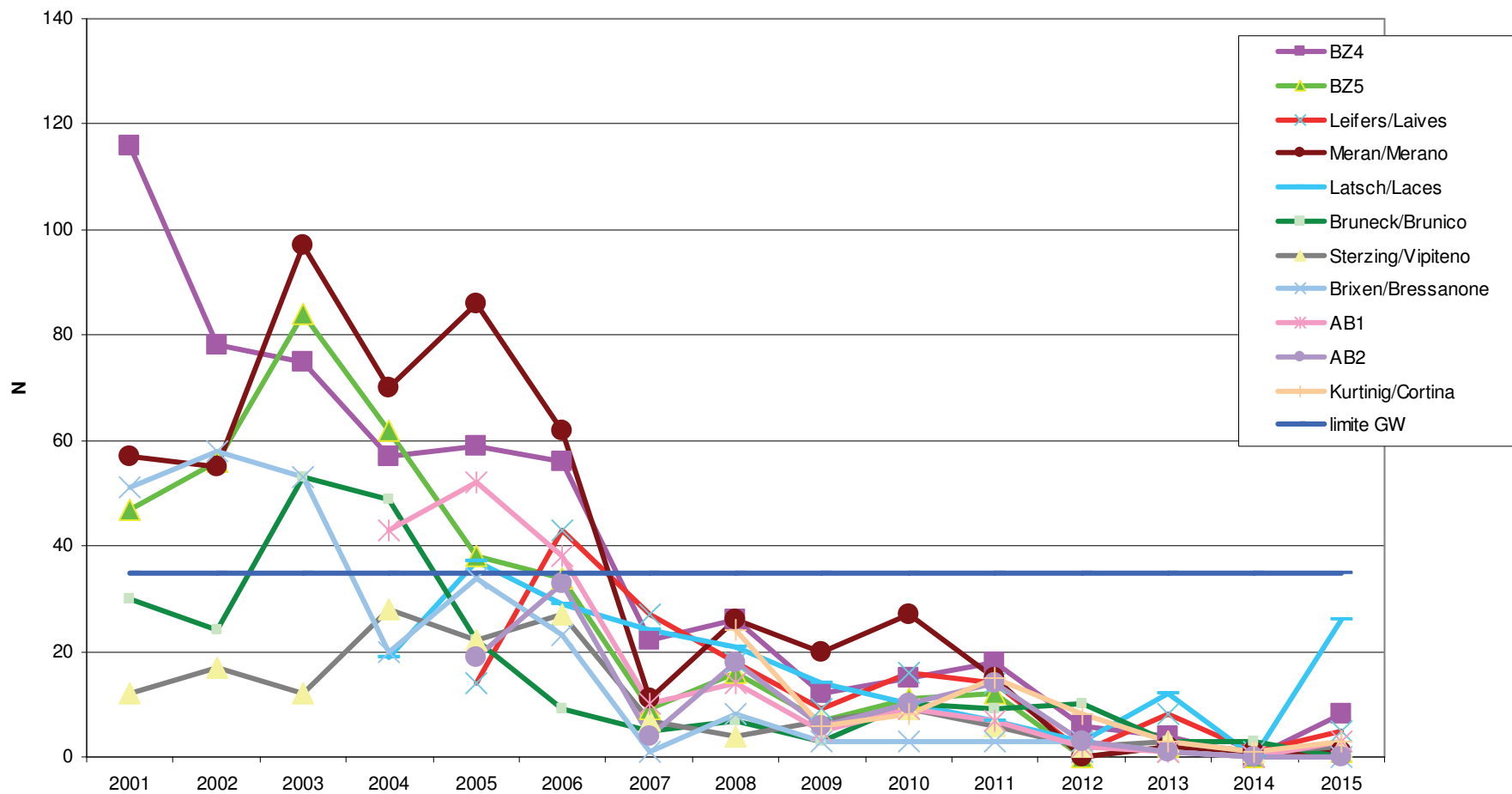
NO2 - Jahresmittelwerte/medie annuali [$\mu\text{g}/\text{m}^3$]



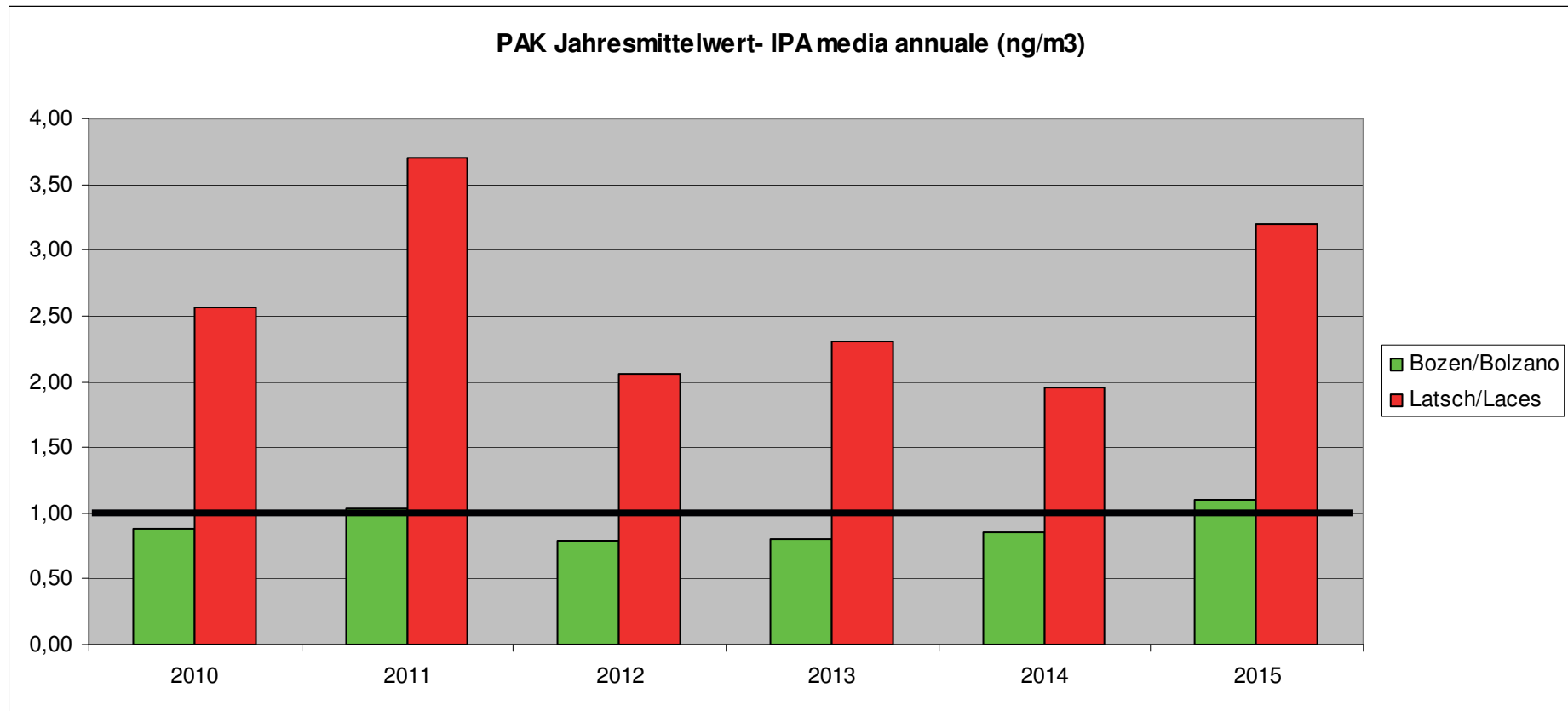
PM10 Jahresmittelwerte/medie annuali [$\mu\text{g}/\text{m}^3$]



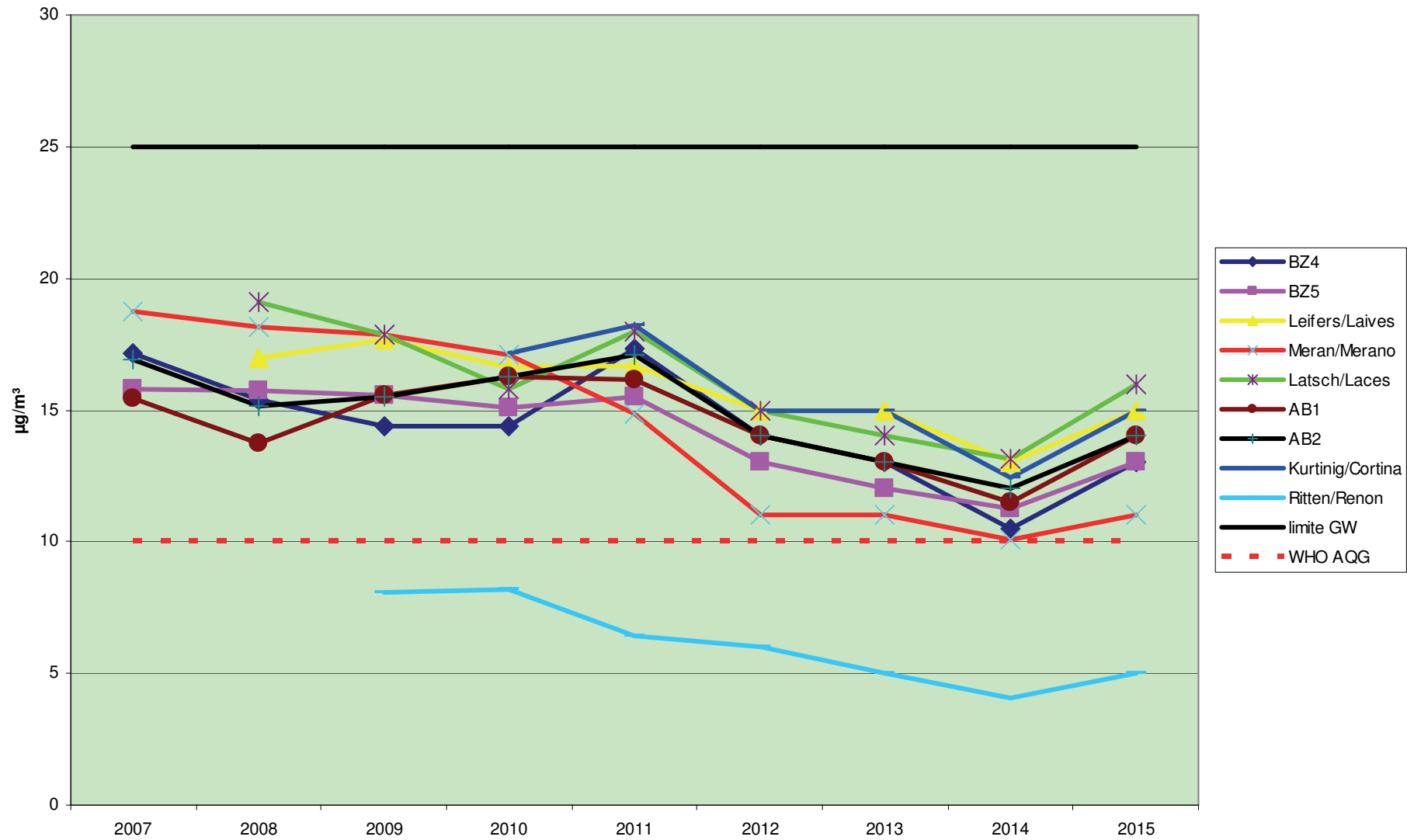
Überschreitungen der Tagesschwelle - PM10 superamenti rispetto (50 µg/m³)



Benzo(a)pyren Zielwert – Benzo(a)pirene valore obiettivo

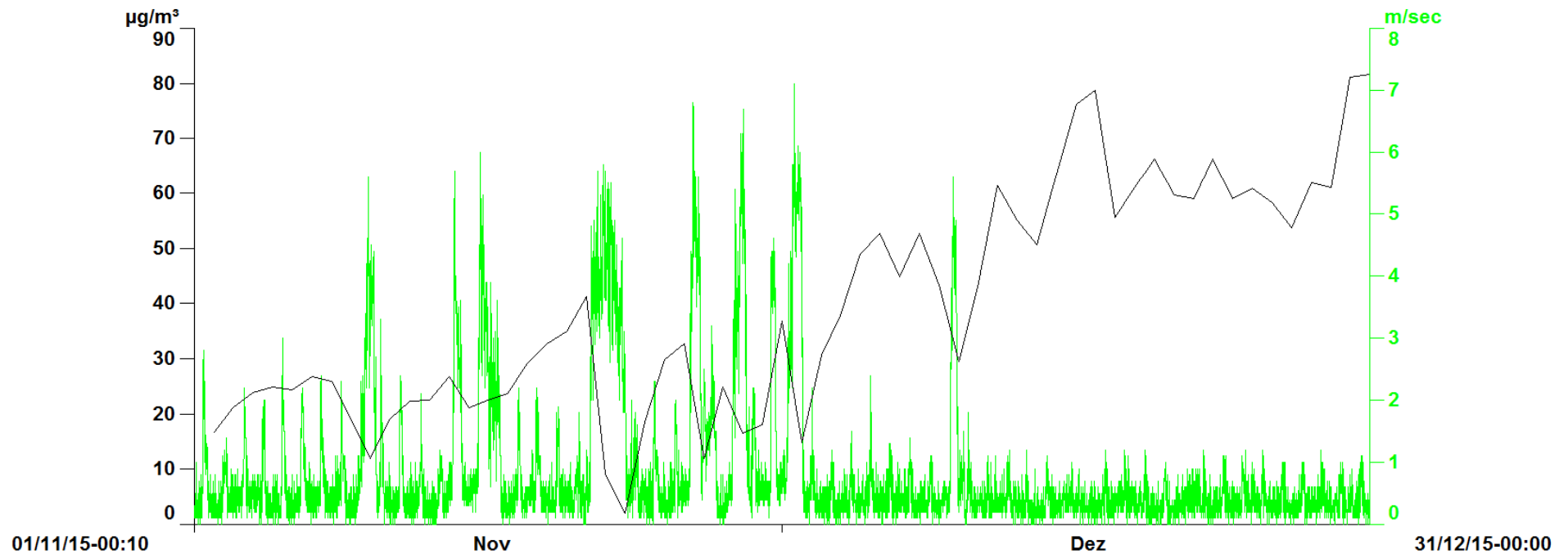


PM2.5 Jahresmittelwerte/medie annuali [$\mu\text{g}/\text{m}^3$]

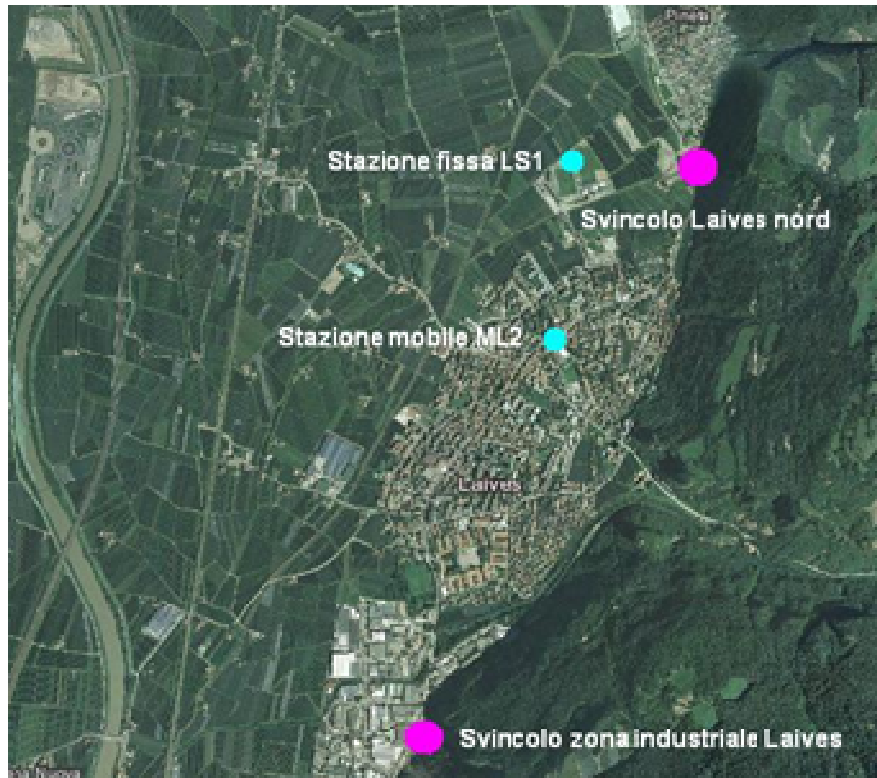


PM10 Latsch - Laces

Station:	LA1	LA1
Seehoehe	640	640
Messwert:	PM10	VEL_V
MW-Typ:	TM-75/MW	ZM/MW
Zeitraum:	1	1
Y - Achse:	1	2
Muster:		

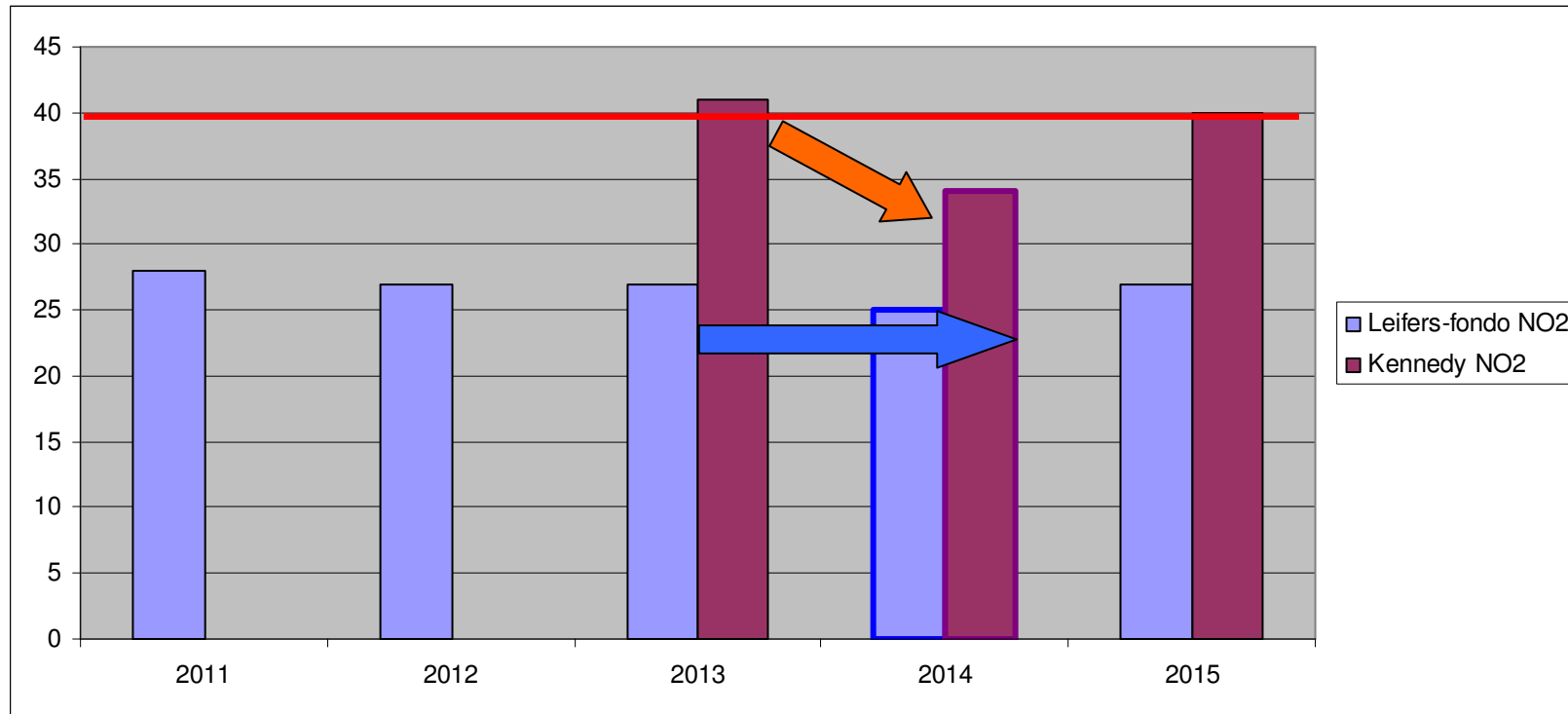


Leifers-Laives



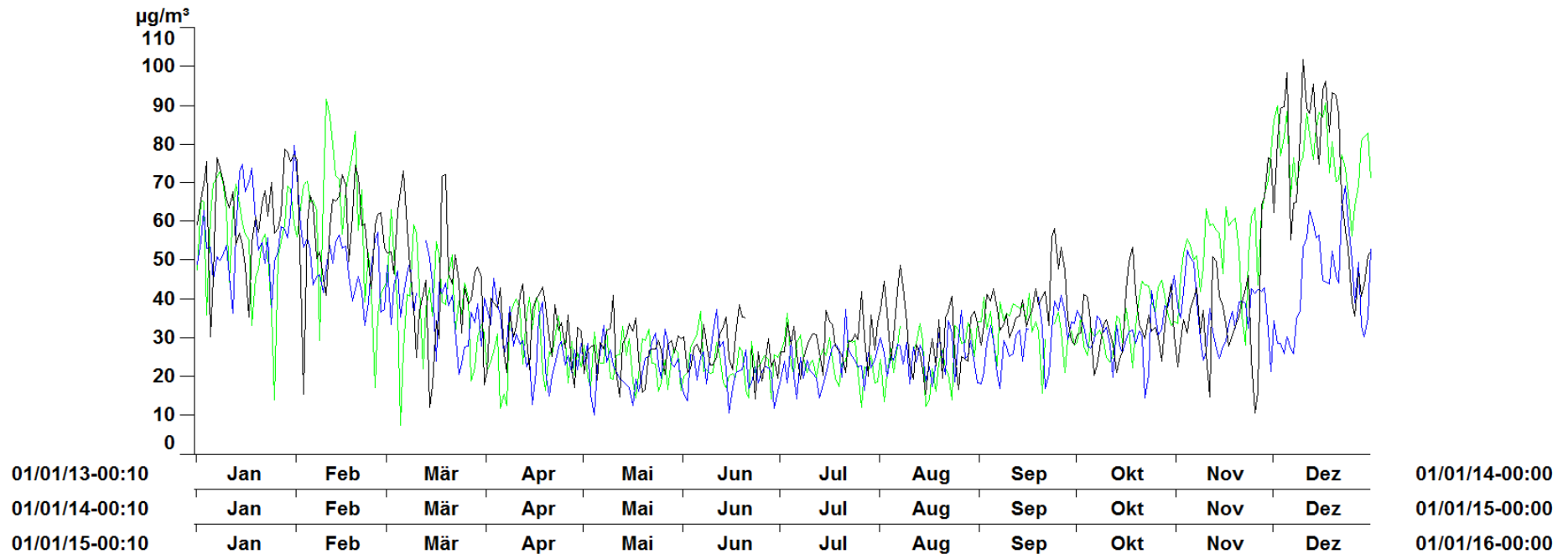
Umfahrung - galleria: 21.12.2013

NO2

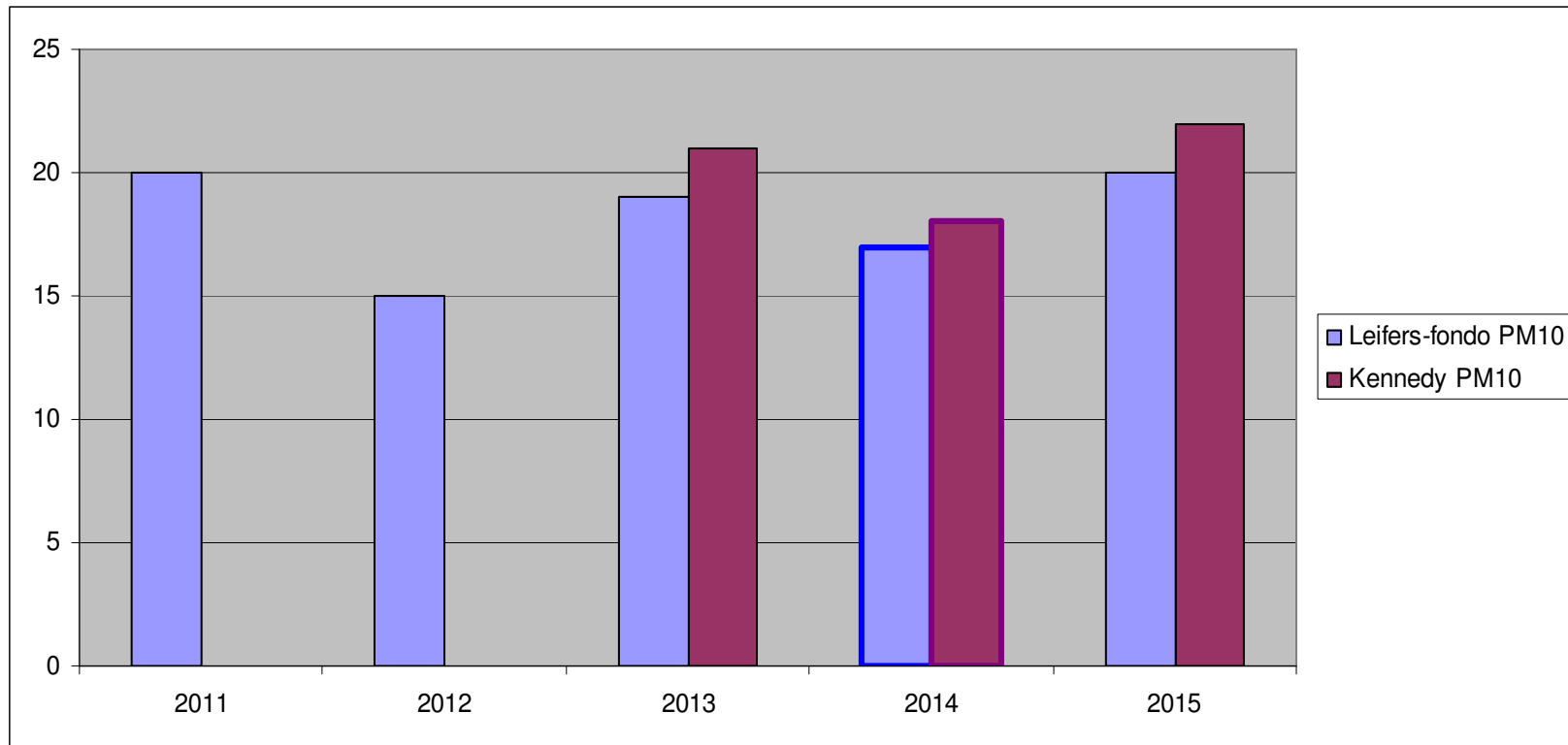


NO2

Station:	ML2	ML2	ML2
Seehoehe	0	0	0
Messwert:	NO2	NO2	NO2
MW-Typ:	TM-75/MW	TM-75/MW	TM-75/MW
Zeitraum:	1	2	3
Y - Achse:	1	1	1
Muster:			



PM10



Demnächst / prossimamente: MEBO

