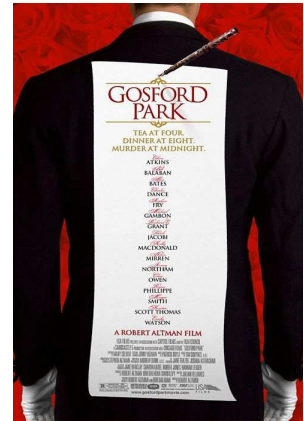


# Gosford Park

Director: Robert Altman  
2001 (137')



In Gosford Park, the great American film director of such films as M\*A\*S\*H, Nashville and Short Cuts, turned to the England of the 1930s for his inspiration. Assembling a cast of many of Britain`s finest actors, Altman used his distinctive style to create this film which follows the events at an aristocrats estate one fateful weekend in 1932. Scheming, betrayal and murder are underway as we watch not only the upper-class of the day but also their servants with their own particular codes of behavior and secrets.

## Vocabulary and Expressions

**Give** somebody **a hand**: Help somebody do something

***Give me a hand with the canopy.***

**Vile**: Horrible; disgusting

***He's still got that vile little dog.***

**Horrid**: Not nice; awful

***Did you have a horrid journey?***

***Yes, fairly horrid.***

**To go on**: To keep talking or complaining about a particular thing or problem  
(negative expression used to show irritation)

***Do please stop going on.***

**To sneak up on** somebody: To approach somebody silently and without warning

***You shouldn't sneak up on people like that.***

**Throw in the towel**: Give up; accept defeat

***It's time to throw in the towel.***

**To break** somebody **in**: To train/teach sb. in a new job or position

**To be worn out**: To be exhausted

***I'm breaking in a new maid. I'm simply worn out with it.***

**Penniless**: Not having any money

**To loiter**: To stand around doing nothing

***No time for loitering***

**To turn in:** To go to bed

***I think I'll turn in.***

***He's a nasty piece of work.:*** He's a horrible/evil man

**Bugger all:** Absolutely nothing (vulgar expression)

***It means bugger all to them.***

**A fag:** A cigarette (in British English)

***I'm desperate for a fag.***

**To snivel:** To cry/weep with excessive sniffing

***Do stop snivelling. Anyone would think you were Italian.***

**A ruffian:** A violent, often criminal man (old-fashioned word)

**Randy:** Lustful; eager for sex

***He was a hard-hearted, randy old sod.***

*"Gosford Park" is the kind of generous, sardonic, deeply layered movie that Altman has made his own. As a director he has never been willing to settle for plot; he is much more interested in character and situation, and likes to assemble unusual people in peculiar situations and stir the pot. Here he is, like Prospero, serenely the master of his art.*

Roger Ebert, ***Chicago Sun-Times***

*Robert Altman has said that all the large ensemble films he has made since he emerged on the world scene in 1970 with M\*A\*S\*H have been about families, real or surrogate, functional and dysfunctional. His first British film, Gosford Park, set in November 1932, deals with that family of which George Orwell wrote early in World War II: 'A family with the wrong members in control - that, perhaps, is as near as one can get to describing England in a phrase.'*

Philip French, ***The Observer***